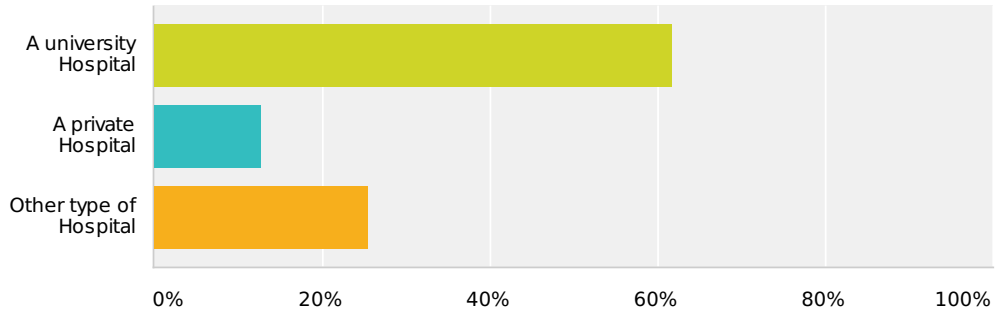


Q1 In which country is your centre based?

Answered: 48 Skipped: 0

Q2 Is your institution :

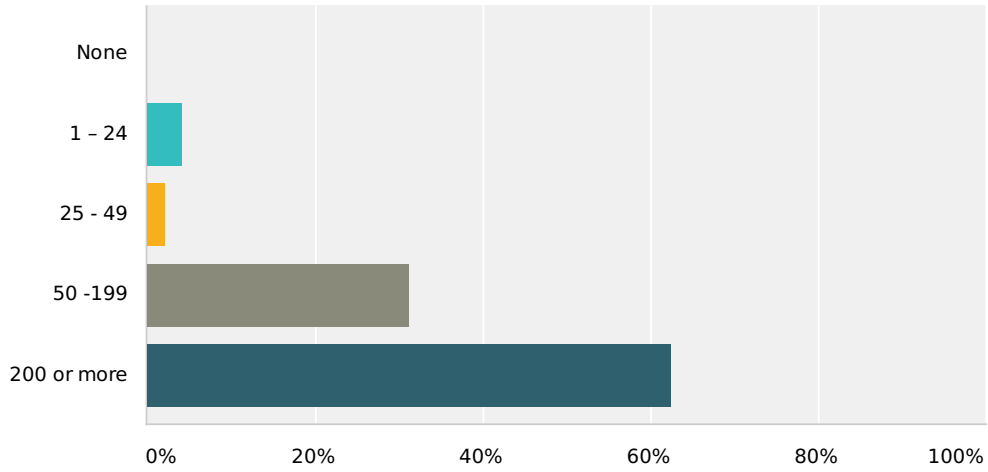
Answered: 47 Skipped: 1



Answer Choices	Responses
A university Hospital	61.70% 29
A private Hospital	12.77% 6
Other type of Hospital	25.53% 12
Total	47

Q3 Number of Pacemaker implantations (Including CRT-Ps) at your institution (including box changes) last calendar year :

Answered: 48 Skipped: 0



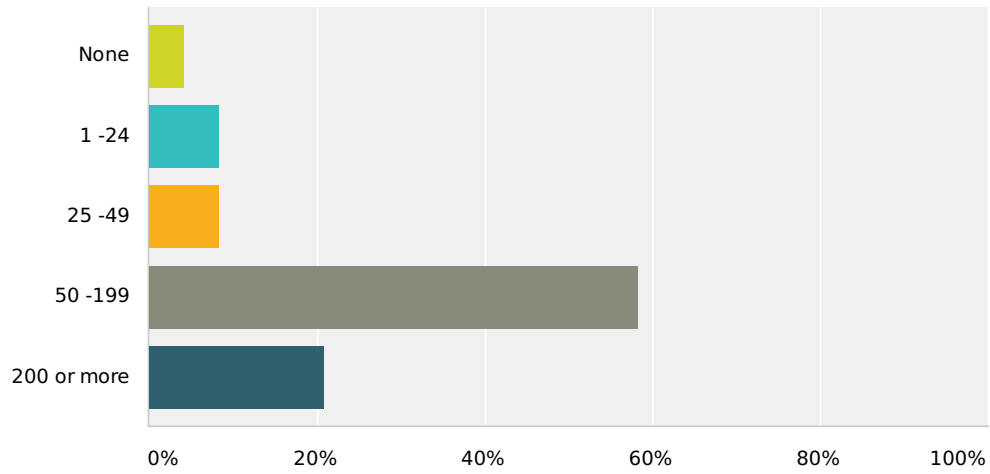
Answer Choices	Responses	Count
None	0%	0
1 - 24	4.17%	2
25 - 49	2.08%	1
50 -199	31.25%	15
200 or more	62.50%	30
Total		48

**Q4 What percentage of your
pacemaker implants receive CRT-P ?**

Answered: 48 Skipped: 0

Q5 Number of ICD implantations (Including CRT-Ds) at your institution (including box changes) last calendar year :

Answered: 48 Skipped: 0



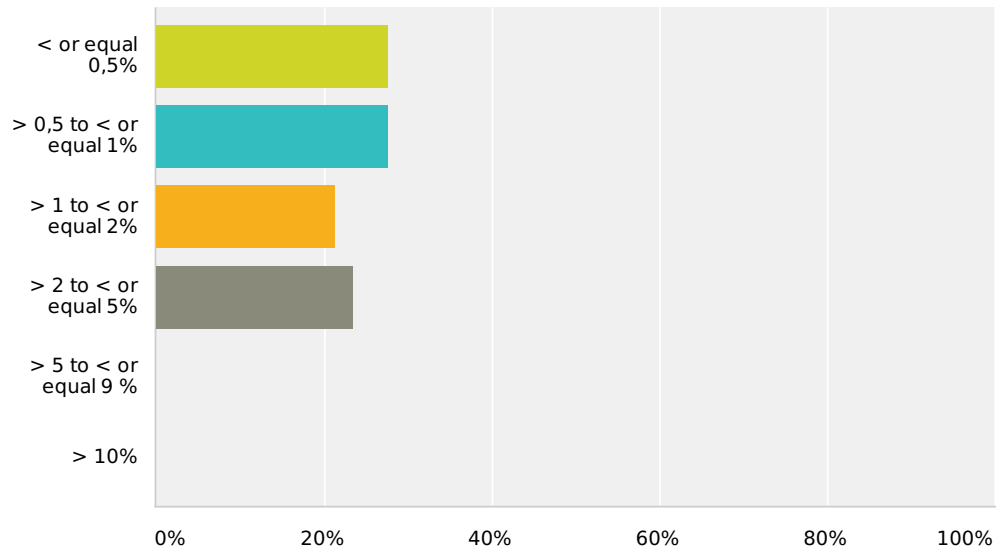
Answer Choices	Responses	
None	4.17%	2
1 -24	8.33%	4
25 -49	8.33%	4
50 -199	58.33%	28
200 or more	20.83%	10
Total		48

Q6 What percentage of ICD Implants receive CRT-D

Answered: 48 Skipped: 0

Q7 What is the estimated incidence of CIED infections at your Centre in 2011?

Answered: 47 Skipped: 1



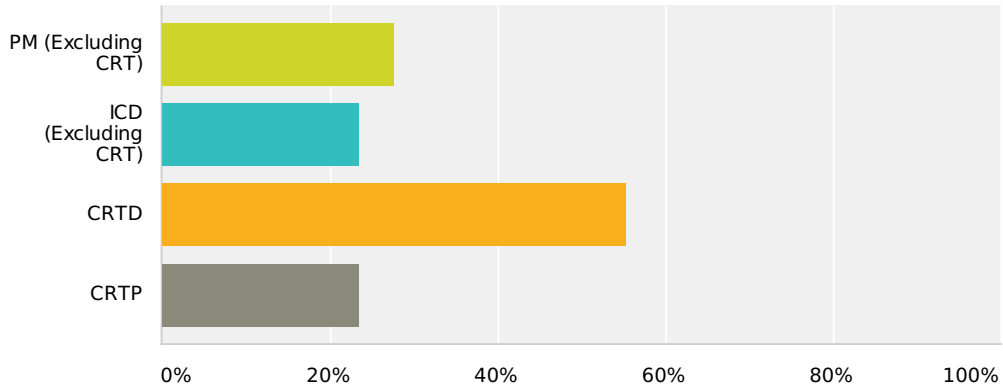
Answer Choices	Responses	Count
< or equal 0,5%	27.66%	13
> 0,5 to < or equal 1%	27.66%	13
> 1 to < or equal 2%	21.28%	10
> 2 to < or equal 5%	23.40%	11
> 5 to < or equal 9 %	0%	0
> 10%	0%	0
Total		47

**Q8 What was the estimated
incidence of CIED infections at your
Centre in 2010?**

Answered: 47 Skipped: 1

Q9 Which kind of devices is associated with higher incidence of infection?

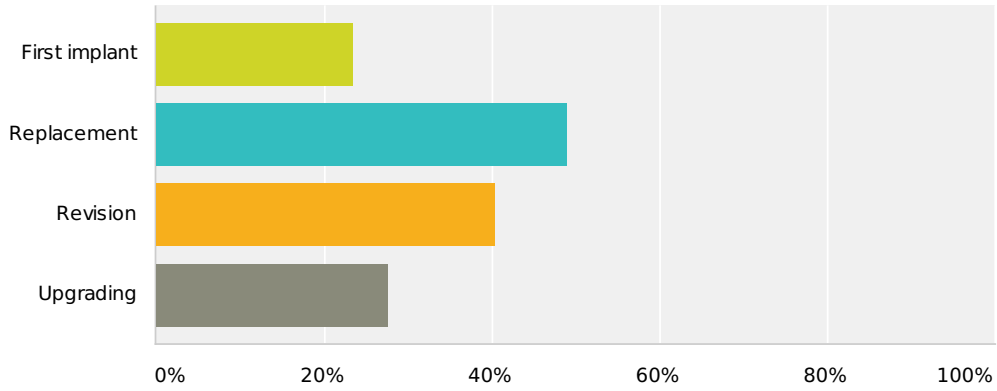
Answered: 47 Skipped: 1



Answer Choices	Responses
PM (Excluding CRT)	27.66% 13
ICD (Excluding CRT)	23.40% 11
CRTD	55.32% 26
CRTP	23.40% 11
Total Respondents: 47	

Q10 Which kind of intervention is associated with higher incidence infection?

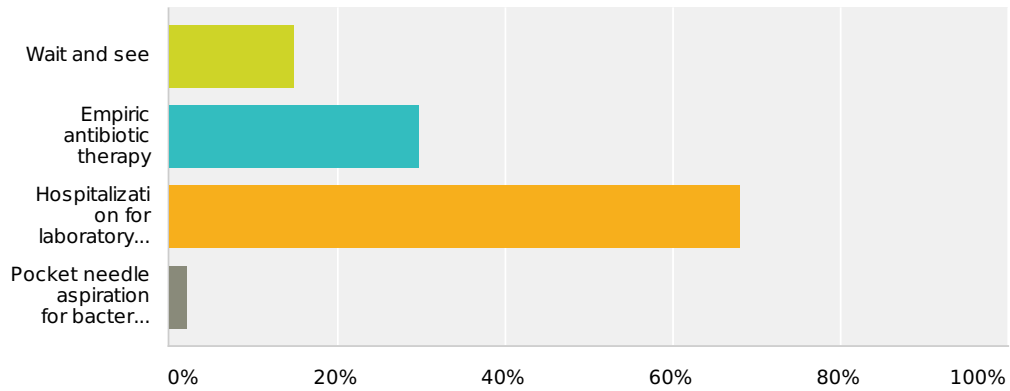
Answered: 47 Skipped: 1



Answer Choices	Responses
First implant	23.40% 11
Replacement	48.94% 23
Revision	40.43% 19
Upgrading	27.66% 13
Total Respondents: 47	

Q11 In presence of pain, swelling and erythema at the site of device pocket how do you proceed?

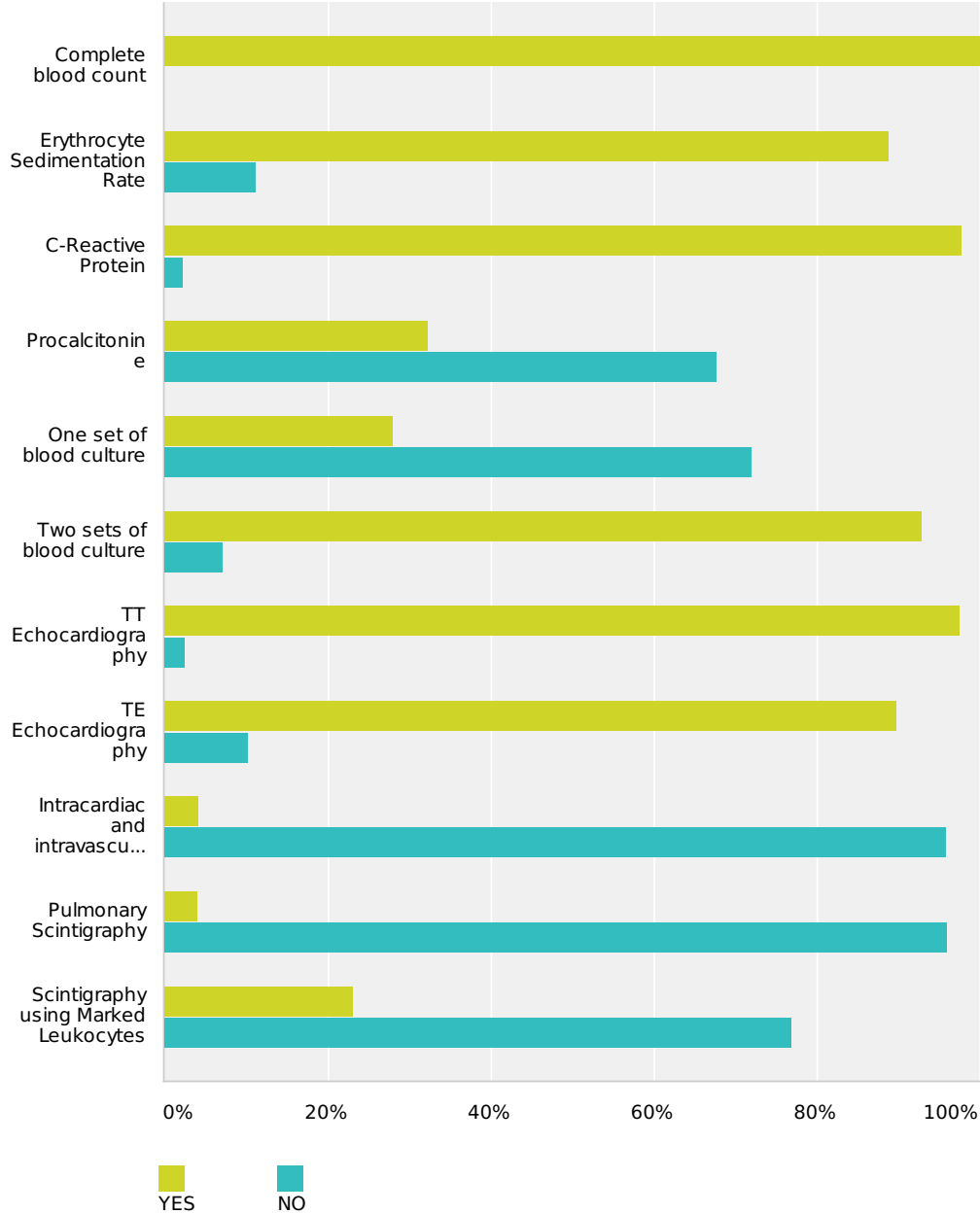
Answered: 47 Skipped: 1



Answer Choices	Responses
Wait and see	14.89% 7
Empiric antibiotic therapy	29.79% 14
Hospitalization for laboratory tests, echocardiogram and adequate treatment	68.09% 32
Pocket needle aspiration for bacterial culture	2.13% 1
Total Respondents: 47	
Other (please specify) (4)	

Q12 In presence of suspected systemic infection and absence of local signs which kind of tests do you perform? (One or more alternatives)

Answered: 47 Skipped: 1



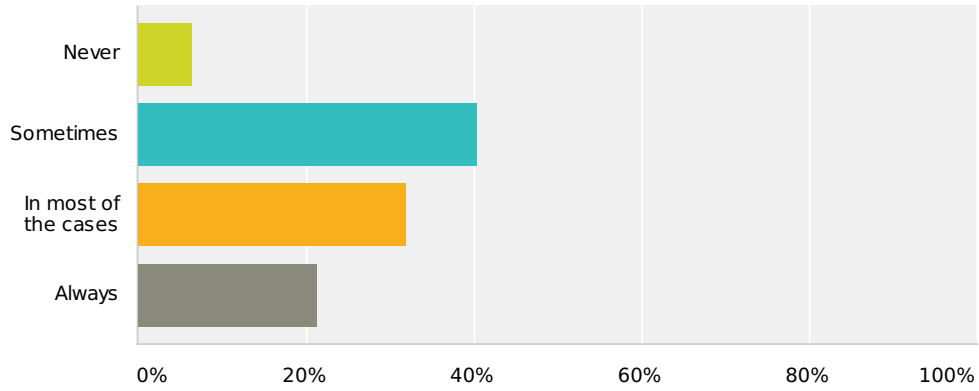
	YES	NO	Total
Complete blood count	100% 47	0% 0	47
Erythrocyte Sedimentation Rate	88.89% 32	11.11% 4	36
C-Reactive Protein	97.78% 44	2.22% 1	45
Procalcitonine	32.26% 10	67.74% 21	31

EP WIRE - INFECTIONS AND CIED (Cardiac Implantable Electronic Devices)

One set of blood culture	28.00% 7	72% 18	25
Two sets of blood culture	92.86% 39	7.14% 3	42
TT Echocardiography	97.50% 39	2.50% 1	40
TE Echocardiography	89.74% 35	10.26% 4	39
Intracardiac and intravascular echocardiography	4.17% 1	95.83% 23	24
Pulmonary Scintigraphy	4% 1	96% 24	25
Scintigraphy using Marked Leukocytes	23.08% 6	76.92% 20	26

Q13 Do you usually consult an infectious disease specialist to diagnose and treat CIED's infections

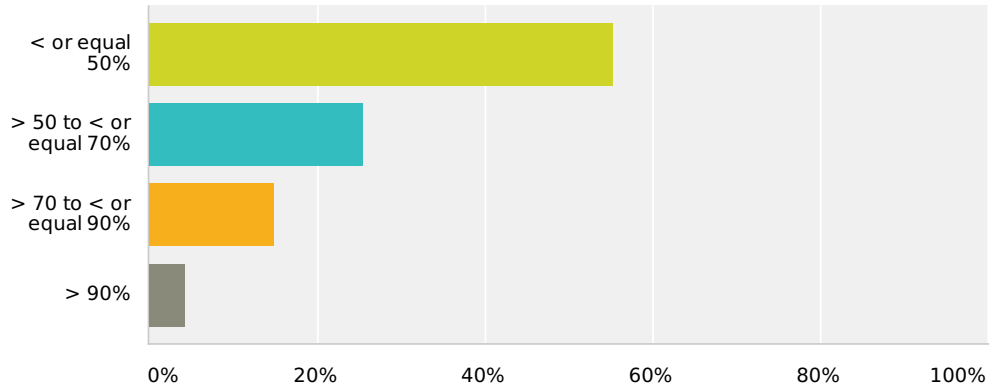
Answered: 47 Skipped: 1



Answer Choices	Responses
Never	6.38% 3
Sometimes	40.43% 19
In most of the cases	31.91% 15
Always	21.28% 10
Total	47

Q14 In case of systemic CIED's infections, what is the estimated incidence of positive blood culture in your Center?

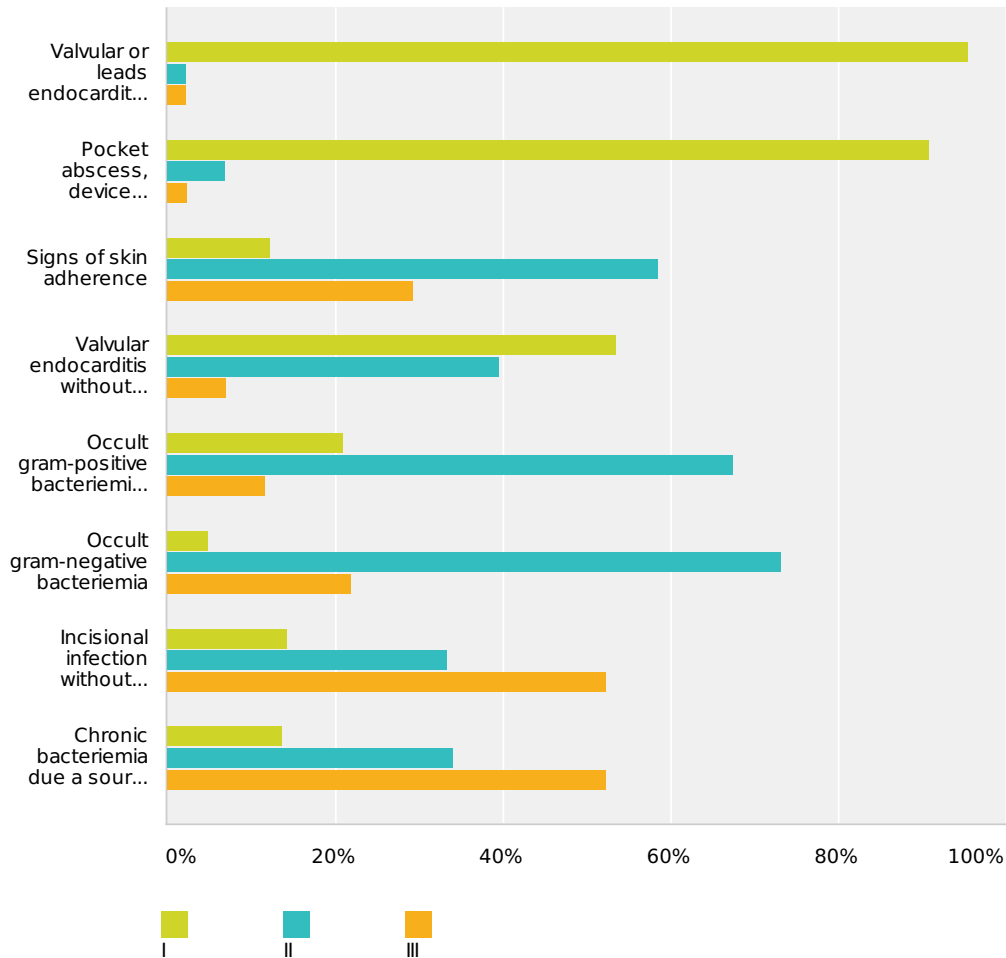
Answered: 47 Skipped: 1



Answer Choices	Responses	
< or equal 50%	55.32%	26
> 50 to < or equal 70%	25.53%	12
> 70 to < or equal 90%	14.89%	7
> 90%	4.26%	2
Total		47

Q15 When is complete hardware removal (Device + Leads) indicated as curative therapy?: (Choose the Class of indication I - II - III)

Answered: 46 Skipped: 2



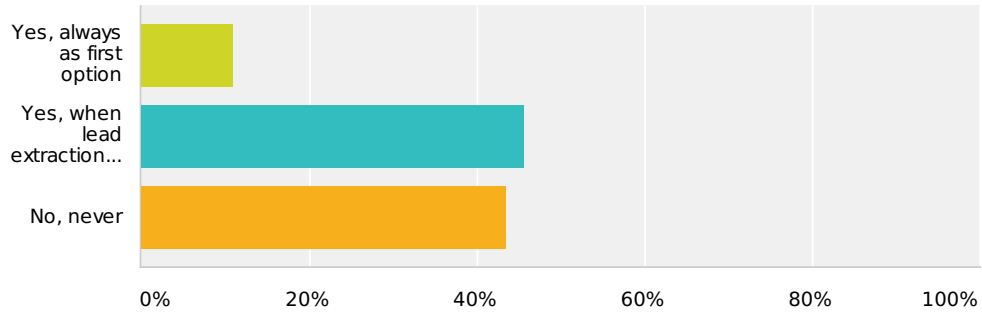
	I	II	III	Total
Valvular or leads endocarditis, or sepsis	95.56% 43	2.22% 1	2.22% 1	45
Pocket abscess, device erosion or chronic draining sinus	90.91% 40	6.82% 3	2.27% 1	44
Signs of skin adherence	12.20% 5	58.54% 24	29.27% 12	41
Valvular endocarditis without definite lead(s) involvement	53.49% 23	39.53% 17	6.98% 3	43
Occult gram-positive bacteriemia (not contaminant)	20.93% 9	67.44% 29	11.63% 5	43
Occult gram-negative bacteriemia	4.88% 2	73.17% 30	21.95% 9	41
Incisional infection without device and/or leads involvement	14.29% 6	33.33% 14	52.38% 22	42

EP WIRE - INFECTIONS AND CIED (Cardiac Implantable Electronic Devices)

Chronic bacteriemia due a source other than the CIED	13.64% 6	34.09% 15	52.27% 23	44

Q16 In case of local infection do you use a conservative treatment strategy i.e. local debridement and new pocket formation?

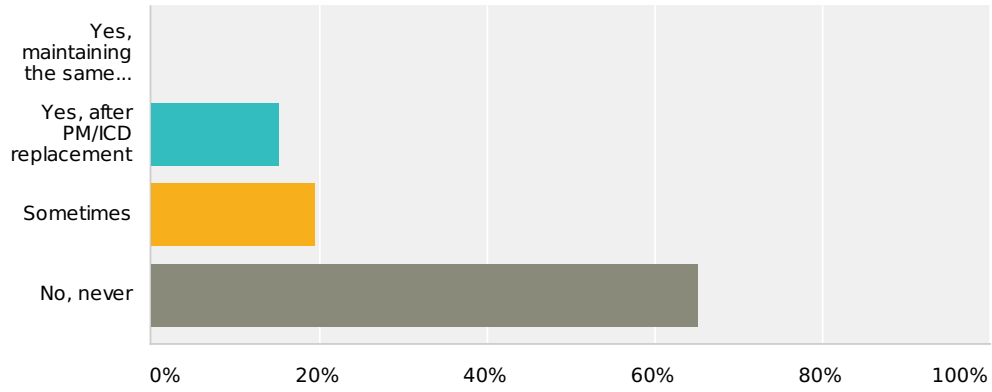
Answered: 46 Skipped: 2



Answer Choices	Responses
Yes, always as first option	10.87% 5
Yes, when lead extraction is at high risk	45.65% 21
No, never	43.48% 20
Total	46

Q17 In case of CIEDs infection, as conservative treatment, do you perform a pocket irrigation with antiseptic/antibiotics?

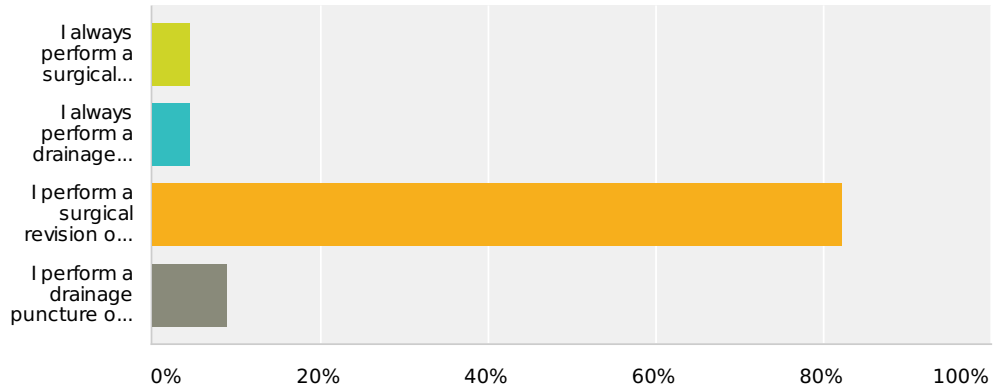
Answered: 46 Skipped: 2



Answer Choices	Responses	
Yes, maintaining the same device	0%	0
Yes, after PM/ICD replacement	15.22%	7
Sometimes	19.57%	9
No, never	65.22%	30
Total		46

Q18 How do you manage pocket hematoma after CIED intervention?

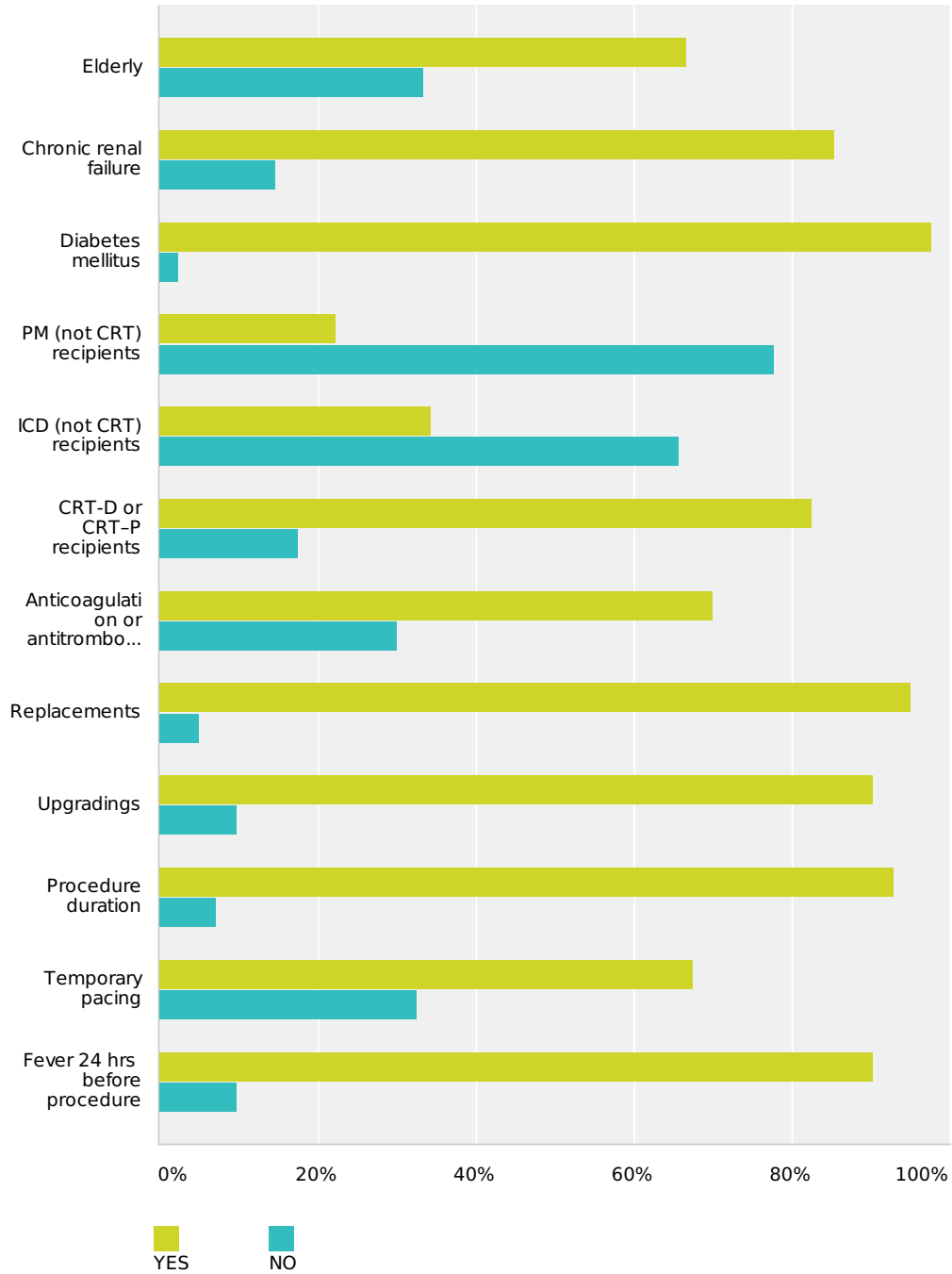
Answered: 45 Skipped: 3



Answer Choices	Responses
I always perform a surgical revision.	4.44% 2
I always perform a drainage puncture.	4.44% 2
I perform a surgical revision only in case of tense and painful hematoma.	82.22% 37
I perform a drainage puncture only in case of tense and painful hematoma	8.89% 4
Total	45

Q19 Which of the following do you consider as risk factors for CIED's infection ?

Answered: 45 Skipped: 3



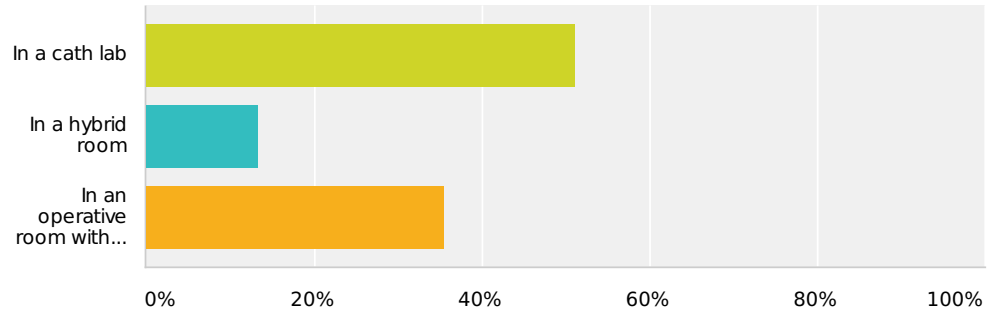
	YES	NO	Total
Elderly	66.67% 28	33.33% 14	42
Chronic renal failure	85.37% 35	14.63% 6	41
Diabetes mellitus	97.62% 41	2.38% 1	42

EP WIRE - INFECTIONS AND CIED (Cardiac Implantable Electronic Devices)

PM (not CRT) recipients	22.22% 8	77.78% 28	36
ICD (not CRT) recipients	34.29% 12	65.71% 23	35
CRT-D or CRT-P recipients	82.50% 33	17.50% 7	40
Anticoagulation or antitrombotic therapy	70% 28	30% 12	40
Replacements	95% 38	5% 2	40
Upgradings	90.24% 37	9.76% 4	41
Procedure duration	92.86% 39	7.14% 3	42
Temporary pacing	67.50% 27	32.50% 13	40
Fever 24 hrs before procedure	90.24% 37	9.76% 4	41

Q20 Where do you perform CIED implantations?

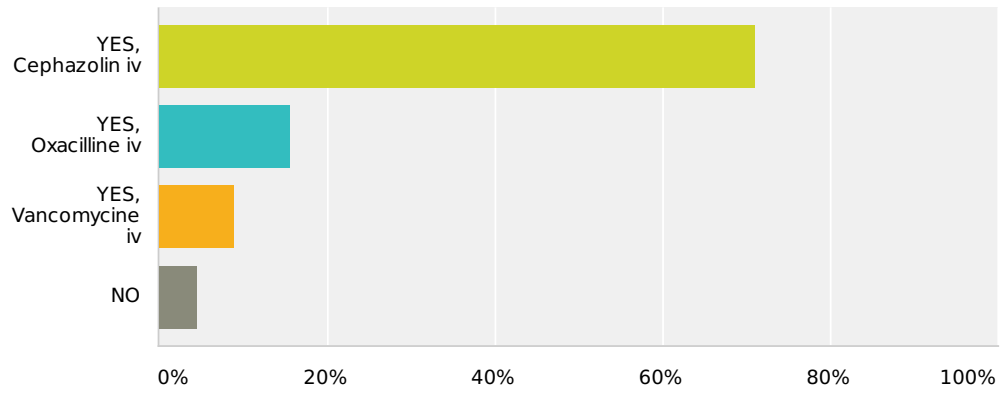
Answered: 45 Skipped: 3



Answer Choices	Responses	
In a cath lab	51.11%	23
In a hybrid room	13.33%	6
In an operative room with ventilation	35.56%	16
Total		45
Other (please specify) (2)		

Q21 Do you prescribe perioperative antibiotic treatment when you implant?

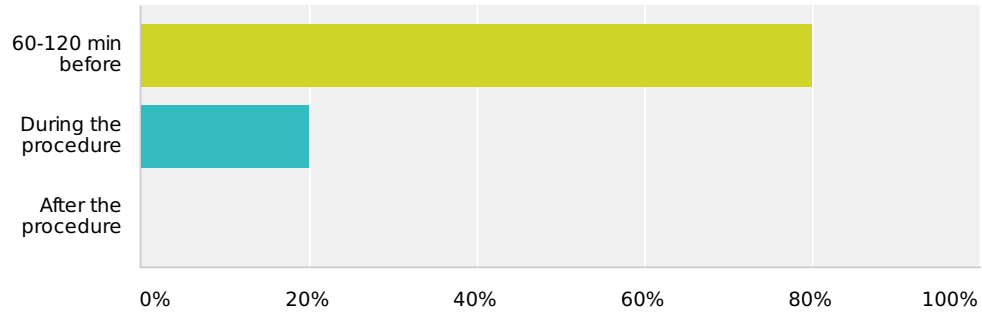
Answered: 45 Skipped: 3



Answer Choices	Responses
YES, Cephazolin iv	71.11% 32
YES, Oxacilline iv	15.56% 7
YES, Vancomycine iv	8.89% 4
NO	4.44% 2
Total	45

Q22 If YES, when do you start the antibiotic treatment?

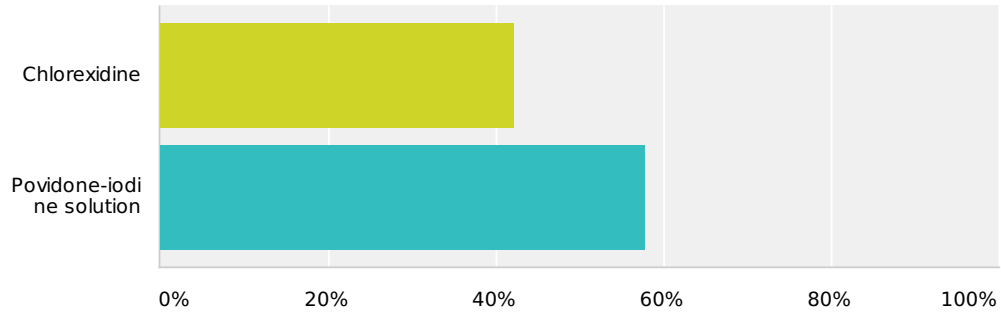
Answered: 45 Skipped: 3



Answer Choices	Responses	
60-120 min before	80%	36
During the procedure	20%	9
After the procedure	0%	0
Total		45

Q23 Which kind of skin antiseptis do you perform?

Answered: 45 Skipped: 3



Answer Choices	Responses
Chlorexidine	42.22% 19
Povidone-iodine solution	57.78% 26
Total	45
Other (please specify) (1)	