

Quantitative MCE for detection of ischaemia and viability

Clinical Case Portal

Date of publication:

01 Dec 2011

Topics: Echocardiography (Non-invasive imaging)
Non-invasive imaging: Echocardiography, MR/CT, Nuclear

Authors:

Nicola Gaibazzi

Reviewers: Benoy Shah, Roxy Senior

Abstract

Case from the [Contrast Echo Box](#)
[Detection of Viability](#)

Introduction

Patient with a first anterior MI in 2003 subacutely treated with PCI on the LAD but an occluded RCA was also found and left untreated.

In January 2011 new anterior STEMI with primary PCI of the LAD (progression of disease): RCA still occluded but also Cx is now severely diseased.

LVEF both at contrast 2D and contrast 3D is 30% and EDV approximately 200-210 ml (see figures 1-11)

Case Report

- True apex demonstrates absent late perfusion and apical lateral and septum show significantly reduced late perfusion, but less in particular if analyzed in end-diastole; the rest of the LV is viable.
- Quantitative analysis confirms very low rate of replenishment in the apex (figures 12-13)

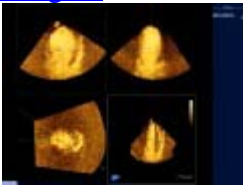
Fig. 1 :
[Image 1](#)



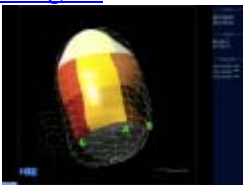
Fig. 2 :
[Image 2](#)



Video 1 :
[Image 3](#)



Video 2 :
[Image 4](#)



Video 3 :
[Image 5](#)



Video 4 :

[Image 6](#)



Fig. 3 :

[Image 7](#)

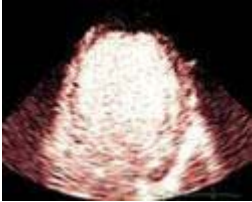


Fig. 4 :

[Image 8](#)

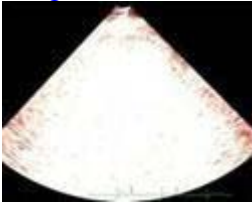


Fig. 5 :

[Image 9](#)



Fig. 6 :

[Image 10](#)



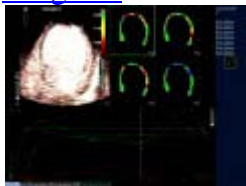
Fig. 7 :

[Image 11](#)



Video 5 :

[Image 12](#)



Video 6 :

[Image 13](#)

