

# Ischaemia: Abnormal Example

## Clinical Case Portal

### Date of publication:

01 Dec 2011

**Topics:** Echocardiography (Non-invasive imaging)  
Non-invasive imaging: Echocardiography, MR/CT, Nuclear

### Authors:

Benoy Shah, Roxy Senior

### Abstract

Case from the [Contrast Echo Box](#)  
[Detection of Ischaemia](#)

### Introduction

- 55 yr old man referred for investigation of chest pain. Smoker, BP
- Dobutamine stress & myocardial contrast echocardiography performed
- Normal wall motion (and therefore by definition perfusion) at rest

### Case Report

#### Abormal Example - STRESS (fig 1-3)

Note:

- At peak stress, widespread perfusion defects in all apical segments, septum and anterior wall despite only the apical septum being hypokinetic.

#### Freeze frames showing perfusion defects (fig 4-6)

Note:

- These are still frames from 1 second after flash destruction. Note the heart rate of 122-126bpm. The yellow arrows depict clear perfusion defects in all three apical views.

### Abnormal Example - Angiogram (fig 7-8)

Note:

- Thus by wall motion criteria, there was only 1/17 ischaemic segments (apical septum)
- But by perfusion, there were 6/17 ischaemic segments (true apical cap, apical septum, apical lateral, apical inferior, apical anterior and mid anterior)
- Coronary angiography revealed an entirely occluded LAD coronary artery, thus proving the incremental value of MCE over wall motion in this case

Video 1 :

[Abnormal stress AP4C](#)



Video 2 :

[Abnormal stress AP2C](#)



Video 3 :

[Abnormal stress AP3C](#)



Fig. 1 :

[Freeze frame AP4C](#)

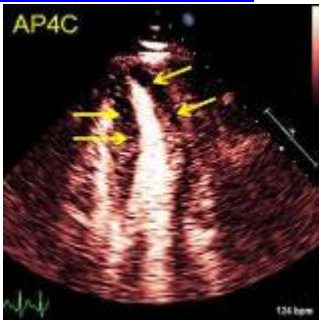


Fig. 2 :  
[Freeze frame AP2C](#)



Fig. 3 :  
[Freeze frame AP3C](#)



Video 4 :  
[Angiogram 1](#)



Video 5 :  
[Angiogram 2](#)

