

# Concordant MCE and wall motion abnormalities

## Clinical Case Portal

### Date of publication:

01 Dec 2011

**Topics:** Echocardiography (Non-invasive imaging)  
Non-invasive imaging: Echocardiography, MR/CT, Nuclear

### Authors:

Nicola Gaibazzi  
Reviewers: Benoy Shah, Roxy Senior

### Abstract

Case from the [Contrast Echo Box](#)  
[Detection of Ischaemia](#)

### Introduction

Patient with recurrent episodes of atypical chest pain and no baseline ECG abnormalities.

### Case Report

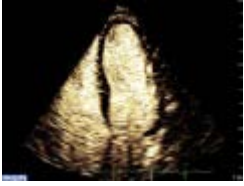
#### Treadmill ECG

Treadmill-ECG performed: Exercise capacity 9.7 METS, 88% age-predicted max HR, with normal ECG but atypical chest pain: Stress echo is requested

#### Stress Echocardiogram (fig 1-2)

In this case, stress echo itself was key to the diagnosis (and possibly life-saving) which was missed by treadmill-ECG, while perfusion imaging, as often in cases of very severe / subocclusive proximal stenosis, did not add to wall motion information

Video 1 :  
[Stress Echocardiogram](#)



Video 2 :  
[Angiogram video](#)

