

# Benefit of MCE over SPECT for detection of ischaemia

## Clinical Case Portal

### Date of publication:

01 Dec 2011

**Topics:** Echocardiography (Non-invasive imaging)  
Non-invasive imaging: Echocardiography, MR/CT, Nuclear

### Authors:

Nicola Gaibazzi  
Reviewers: Benoy Shah, Roxy Senior

### Abstract

Case from the [Contrast Echo Box](#)  
[Detection of Ischaemia](#)

### Introduction

Patient with recurrent episodes of chest pain, no baseline ECG abnormalities, normal exercise-SPECT (few months before) but symptoms persist...(fig 1)

### Case Report

#### Contrast Stress Echocardiogram

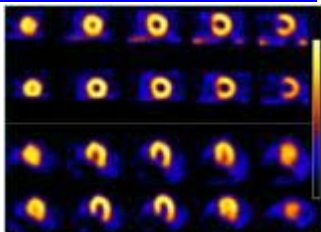
Dipyridamole (0.84mg/kg/6min) contrast stress echocardiogram

Fig 1-2: Normal septal and lateral wall thickening at rest and peak stress (ap4c VIEW)

Fig 3-4: Perfusion imaging on left showing lateral wall defect and severe circumflex stenosis confirmed on angiography

- Proximal Cx significant stenosis
- Incremental / additional information from perfusion imaging

Fig. 1 :  
[Normal exercise-SPECT](#)



Video 1 :  
[Rest](#)



Video 2 :  
[Stress](#)



Video 3 :  
[Stress](#)



Fig. 2 :  
[Angiogram](#)

