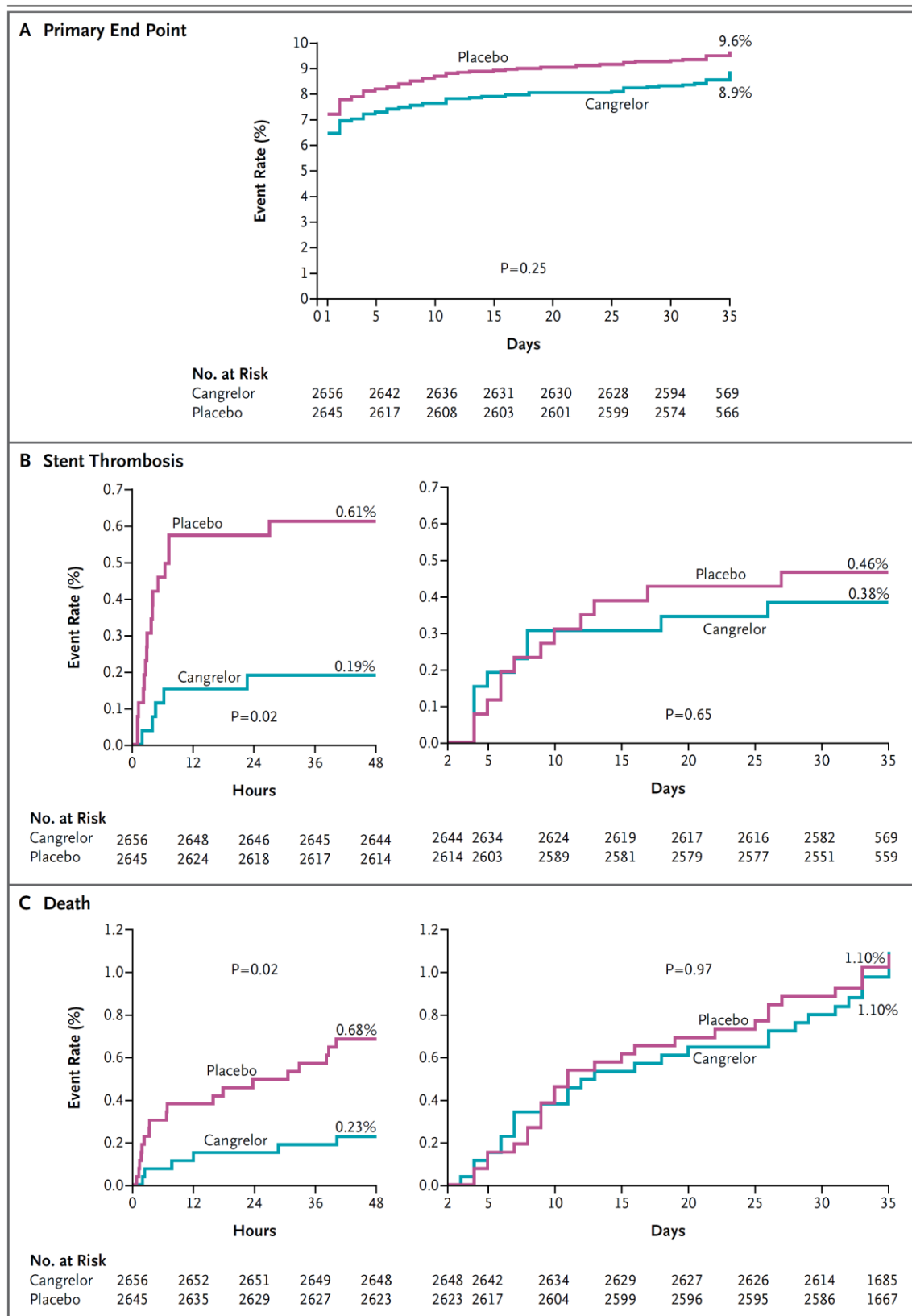


## Kaplan–Meier Curves for the Rate of the Primary End Point, Stent Thrombosis, and Death



**Panel A** shows the rate of the primary efficacy end point — a composite of death, myocardial infarction, or ischemia-driven revascularization at 48 hours after percutaneous coronary intervention (PCI) — in the cangrelor group and the placebo group. **Panel B** shows the rate of stent thrombosis at 48 hours (at left) and at 35 days (at right) after PCI. **Panel C** shows the rate of death at 48 hours (left) and 35 days (right). In Panels B and C, which both show landmark analyses of the Kaplan-Meier curves, the value at day 2 has been reset to zero in the right-hand panels. In all three panels, data are shown for the end points at 30±5 days, as specified in the protocol.