

Exam delivery with tablet

Exam simulation

- Check-in



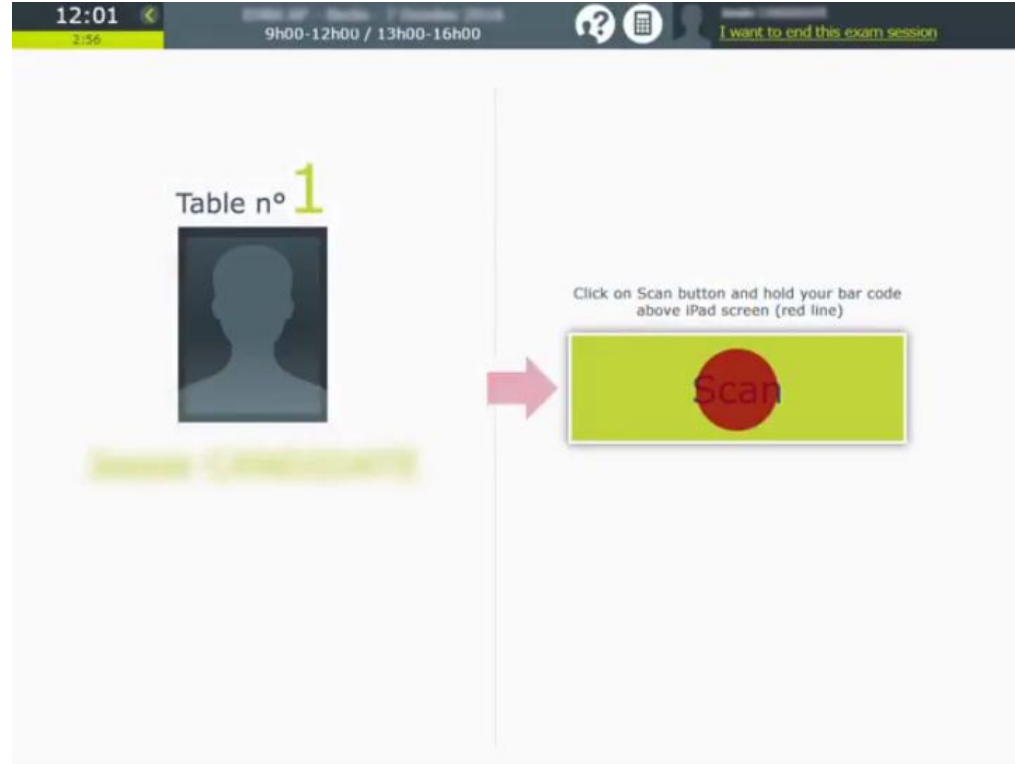
Exam simulation

- **Candidate's table**



Exam simulation

- Tablet display before starting the exam



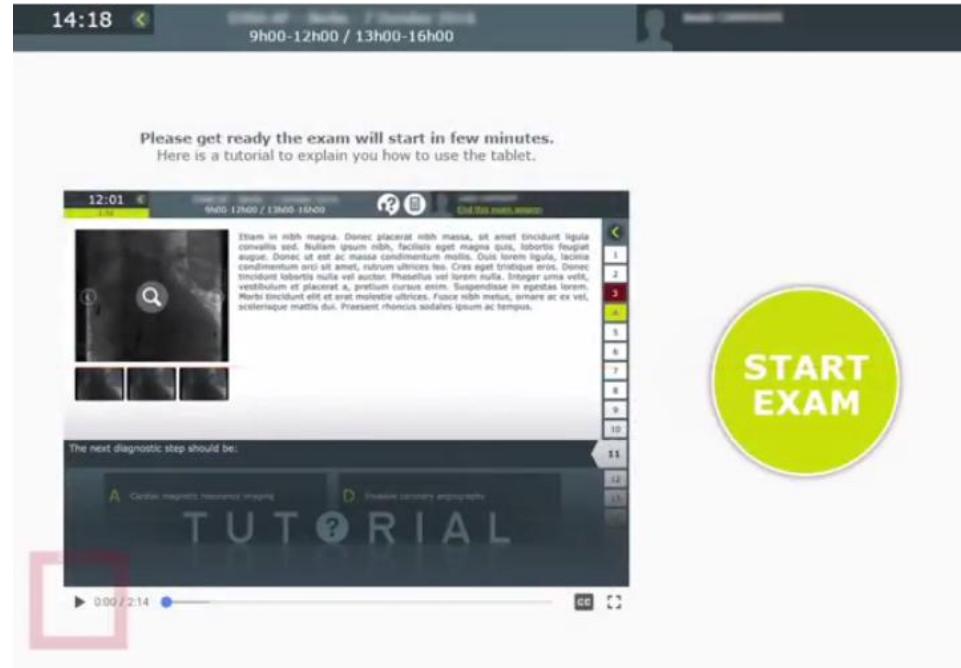
Exam simulation

- Scan the bar code



Exam simulation

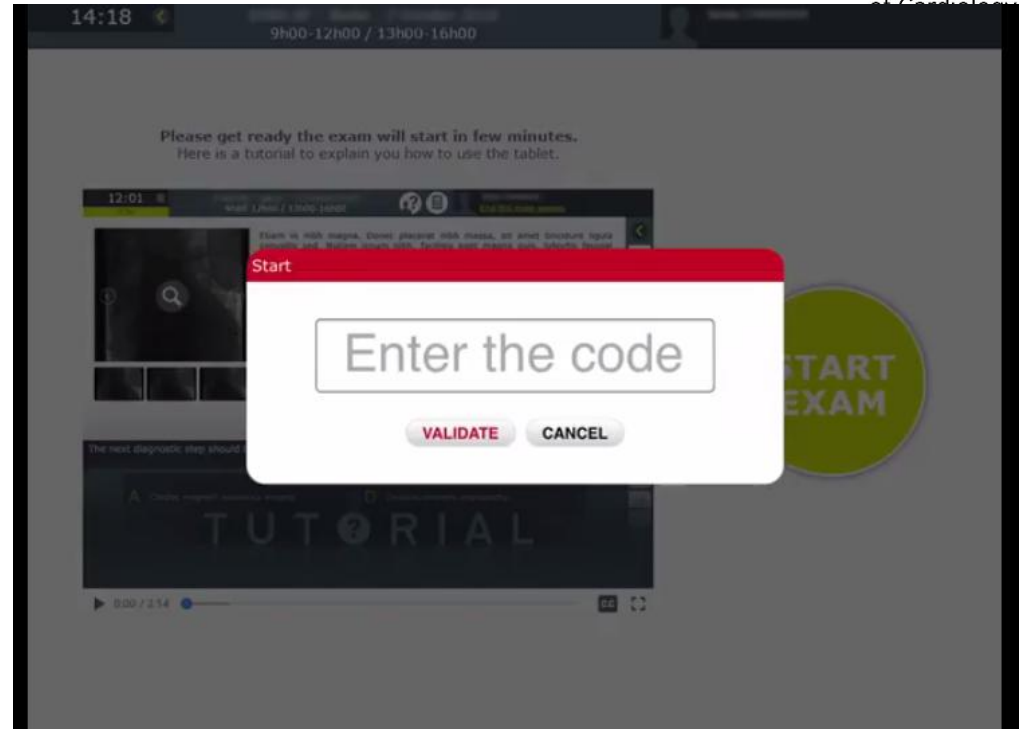
- **Visualisation of tutorial starting the exam**



The screenshot displays a mobile application interface for an exam simulation. At the top, a dark header shows the time 14:18 and the exam schedule 9h00-12h00 / 13h00-16h00. Below the header, a message reads: "Please get ready the exam will start in few minutes. Here is a tutorial to explain you how to use the tablet." The main content area features a video player showing a tutorial. The video frame includes a top status bar with the time 12:01 and the exam schedule. The video content shows a medical image on the left and a text block on the right. Below the video, a question prompt asks "The next diagnostic step should be:" with two options: "A Cardiac magnetic resonance imaging" and "D Proximal coronary angiogram". The word "TUTORIAL" is overlaid in large, semi-transparent letters across the bottom of the video frame. A red square highlights the play button and progress bar at the bottom left of the video player. To the right of the video player is a large, green circular button with the text "START EXAM".

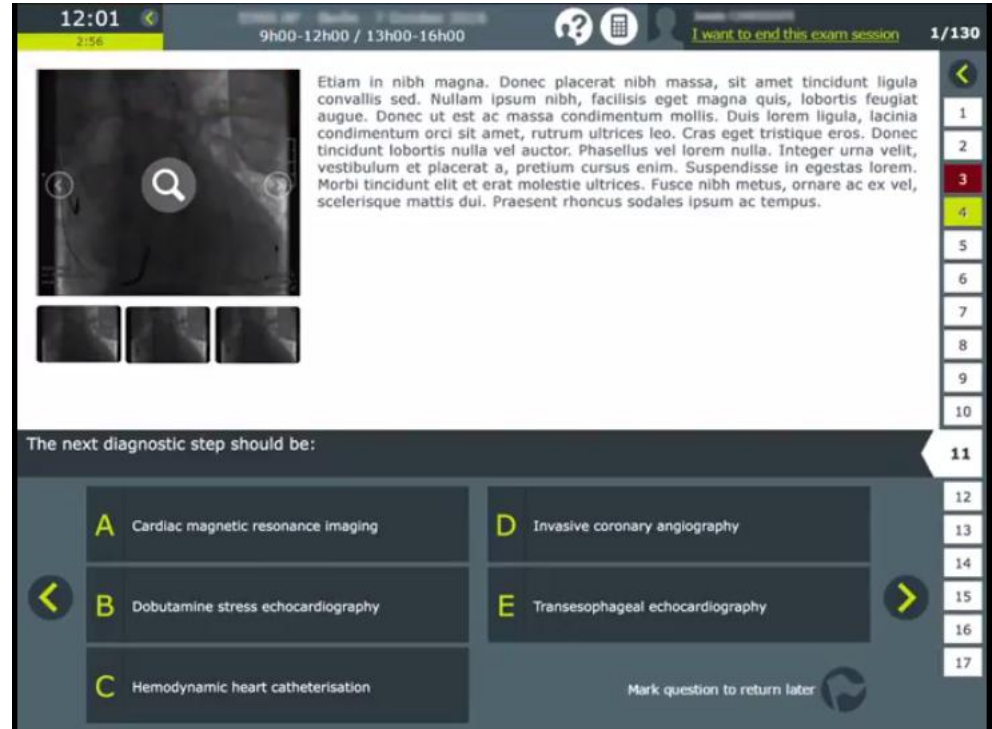
Exam simulation

- Click on start exam and enter the exam code provided by the invigilator



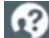

Exam simulation

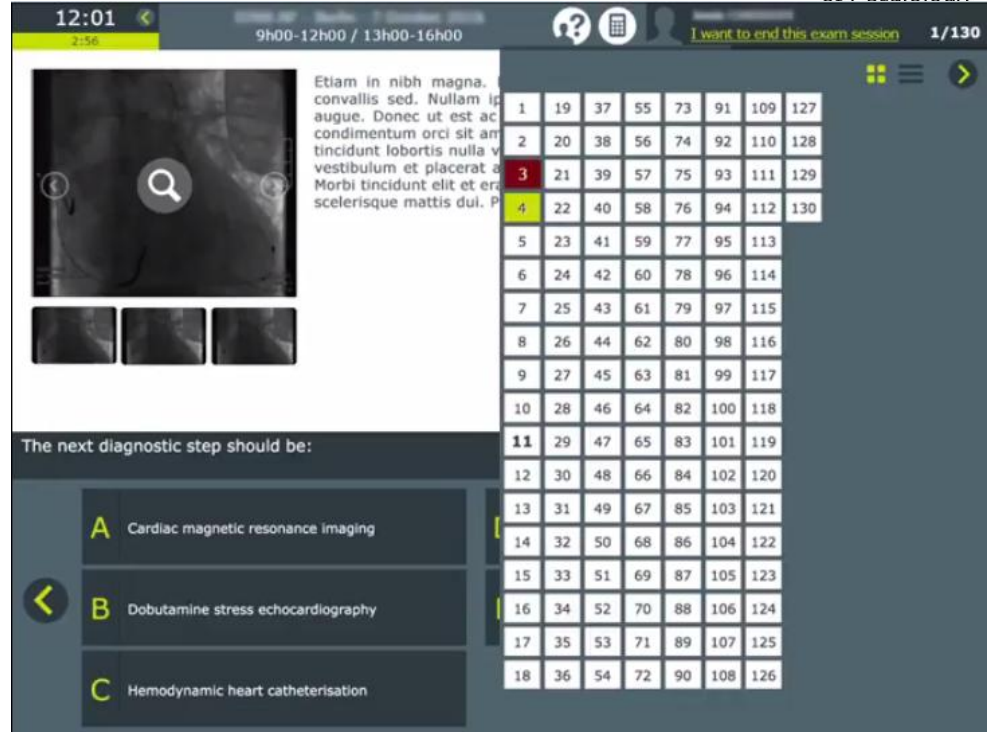
- Questionnaire display



The screenshot displays an exam simulation interface. At the top, it shows the time 12:01, a timer for 2:56, and the exam duration 9h00-12h00 / 13h00-16h00. A button labeled "I want to end this exam session" and a progress indicator "1/130" are also visible. The main content area features a large image of a chest X-ray with a magnifying glass icon, and a block of placeholder text. Below the image are three smaller thumbnail images. A question prompt asks, "The next diagnostic step should be:". Five multiple-choice options are listed: A Cardiac magnetic resonance imaging, B Dobutamine stress echocardiography, C Hemodynamic heart catheterisation, D Invasive coronary angiography, and E Transesophageal echocardiography. A "Mark question to return later" button is located at the bottom right. A vertical list of numbers 1 through 17 is on the right side of the screen.

Exam simulation

- You can navigate through the questions by clicking on the arrows. Or select one specific question is the list available on the right.
 - Question in green: you have answered
 - Question in red: you have flagged the question
 - Question in blank: not answered and not flagged
- Time remaining is available on the top left of the screen.
- Exam information are available on the top of the screen
- Click on the icon  to request help from the invigilator
- Click on the icon  to access the calculator



12:01 2:56 9h00-12h00 / 13h00-16h00 I want to end this exam session 1/130

Etiam in nibh magna. convallis sed. Nullam ip augue. Donec ut est ac condimentum orci sit am tincidunt lobortis nulla vestibulum et placerat a Morbi tincidunt elit et erosclerisque mattis dul. P

1	19	37	55	73	91	109	127
2	20	38	56	74	92	110	128
3	21	39	57	75	93	111	129
4	22	40	58	76	94	112	130
5	23	41	59	77	95	113	
6	24	42	60	78	96	114	
7	25	43	61	79	97	115	
8	26	44	62	80	98	116	
9	27	45	63	81	99	117	
10	28	46	64	82	100	118	
11	29	47	65	83	101	119	
12	30	48	66	84	102	120	
13	31	49	67	85	103	121	
14	32	50	68	86	104	122	
15	33	51	69	87	105	123	
16	34	52	70	88	106	124	
17	35	53	71	89	107	125	
18	36	54	72	90	108	126	

The next diagnostic step should be:

- A Cardiac magnetic resonance imaging
- B Dobutamine stress echocardiography
- C Hemodynamic heart catheterisation

Exam simulation

- End and quit the exam

