

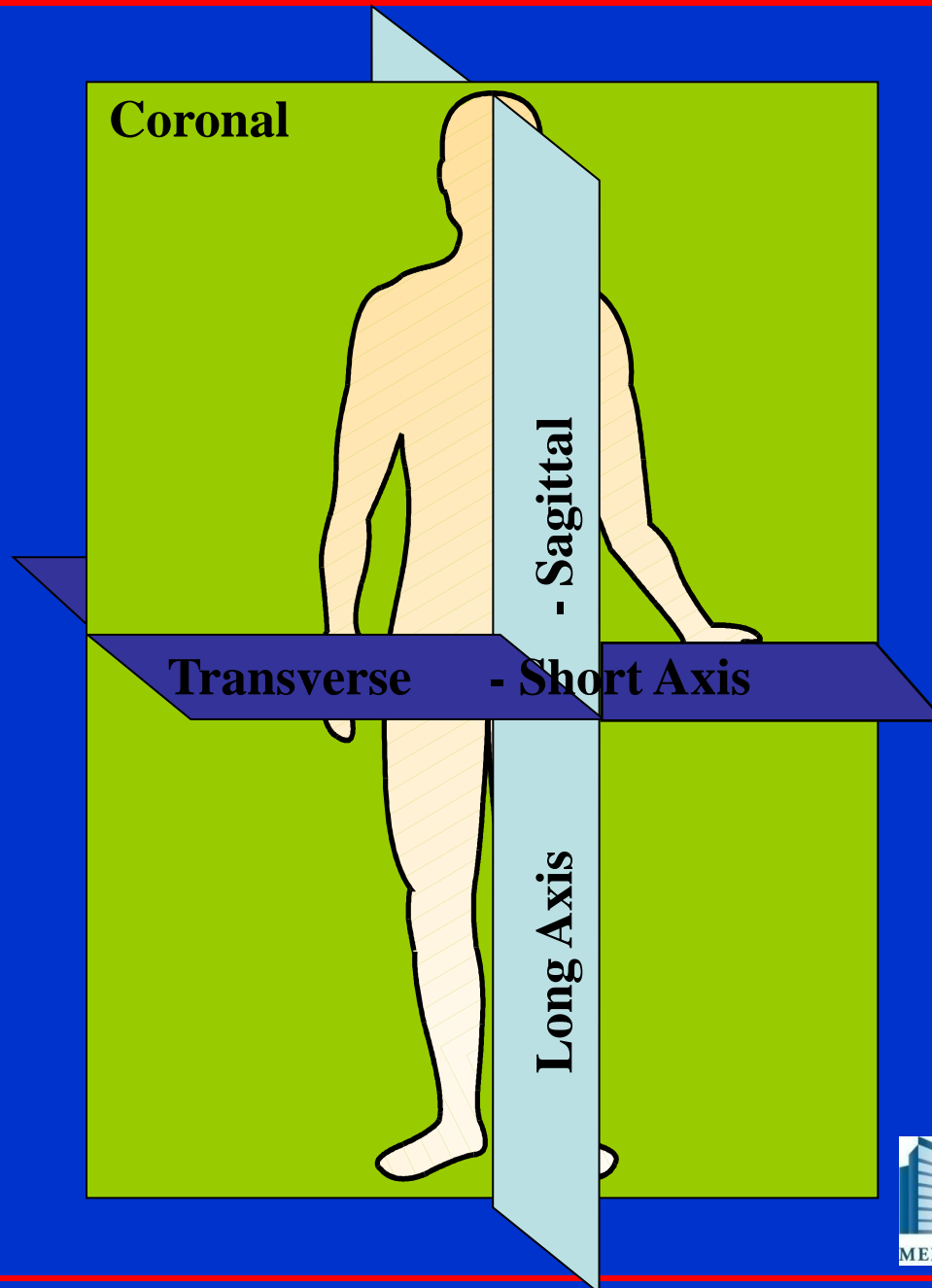
ATTITUDINAL DESCRIPTION



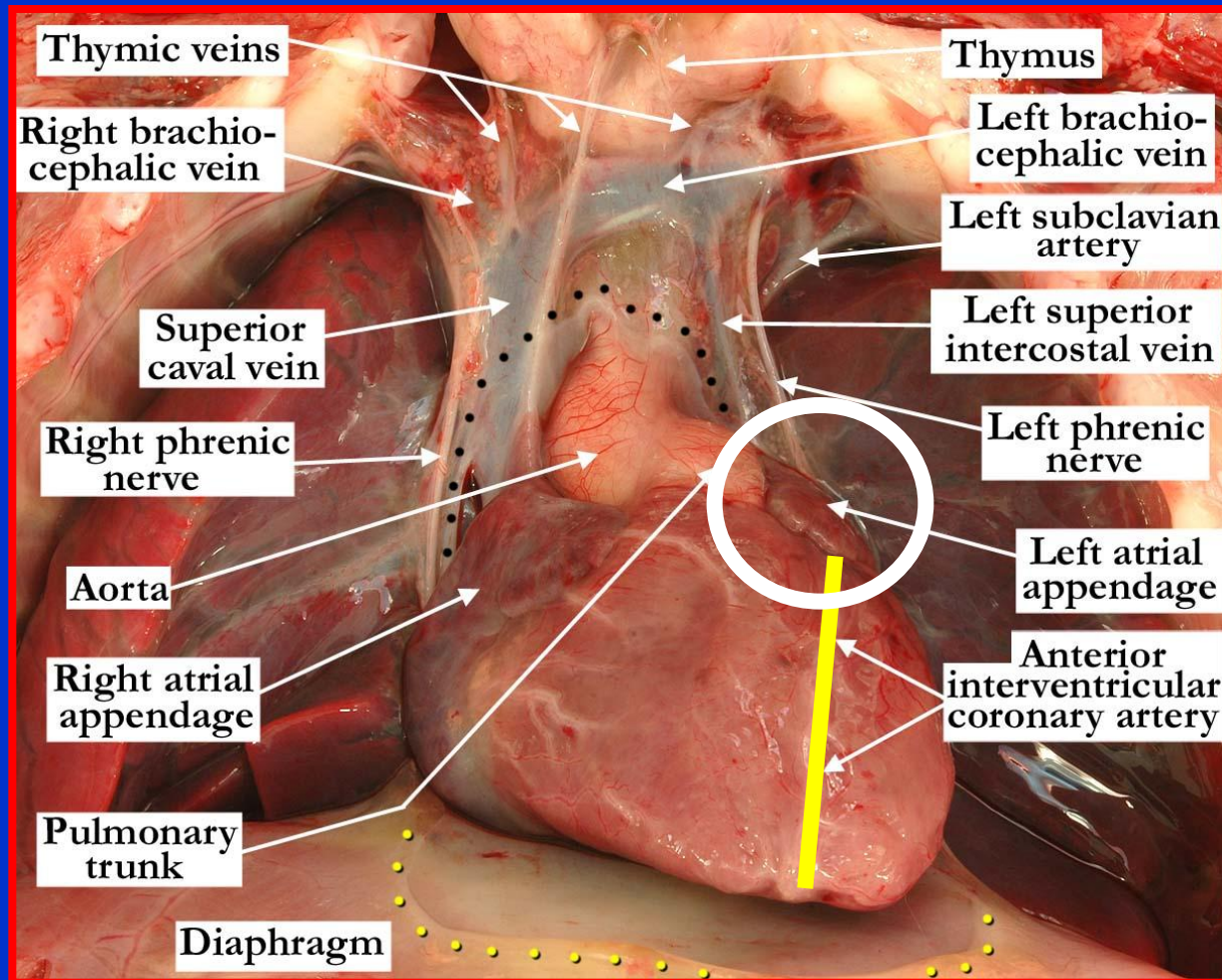
ATTITUDINAL DESCRIPTION

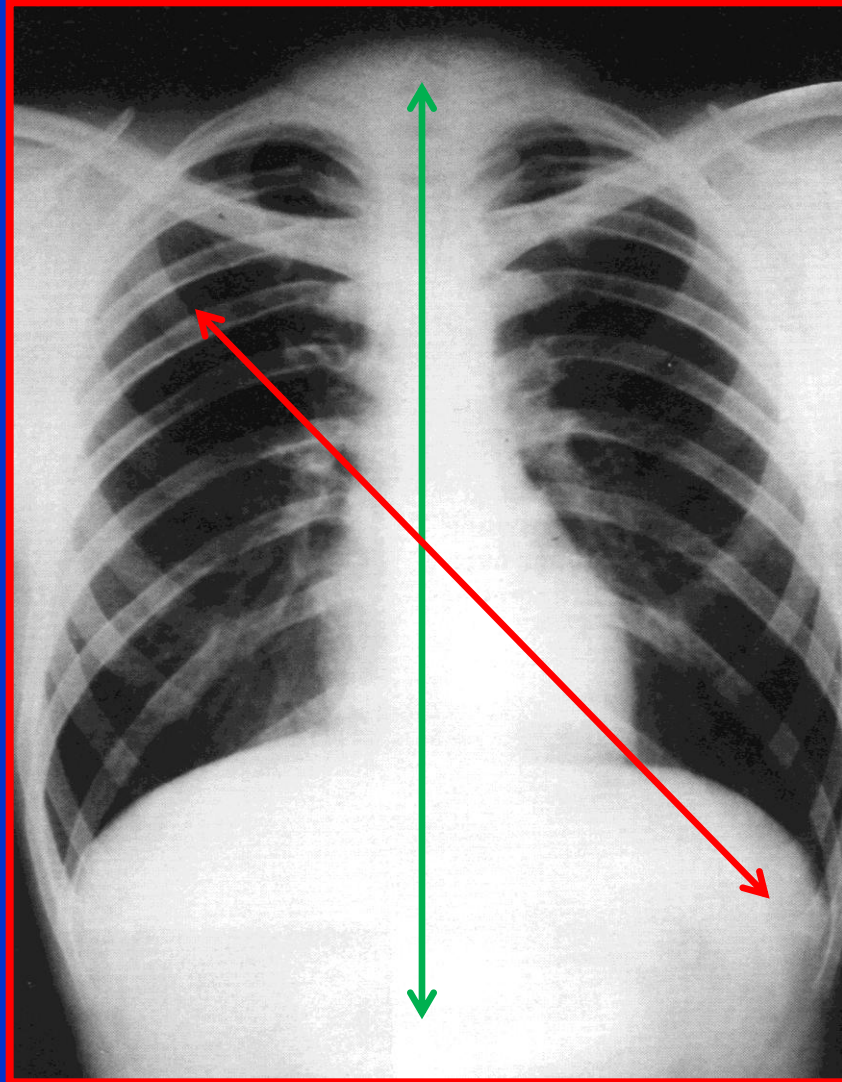
♥ Basic rules of anatomy

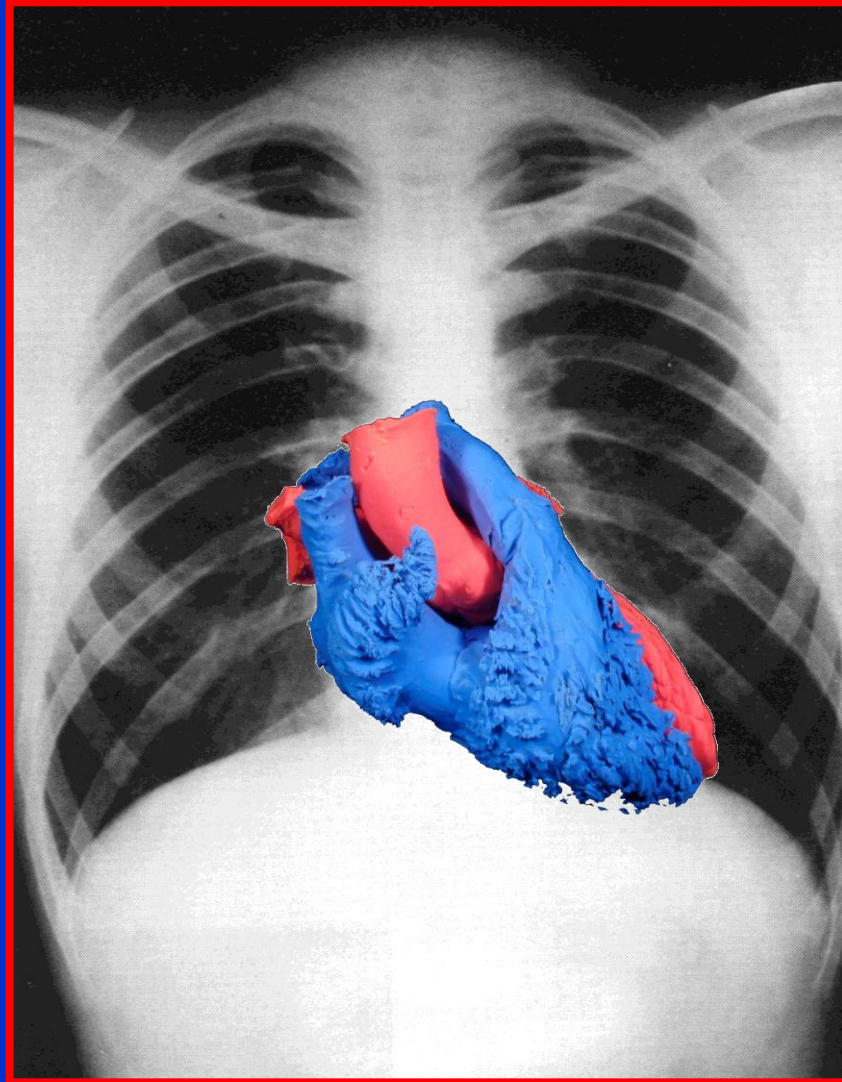
- ♥ All structures are described relative to bodily coordinates
- ♥ The body is described in terms of its three orthogonal planes
- ♥ Heart has its own orthogonal planes
- ♥ Cardiac components, nonetheless, should be described in terms of bodily coordinates

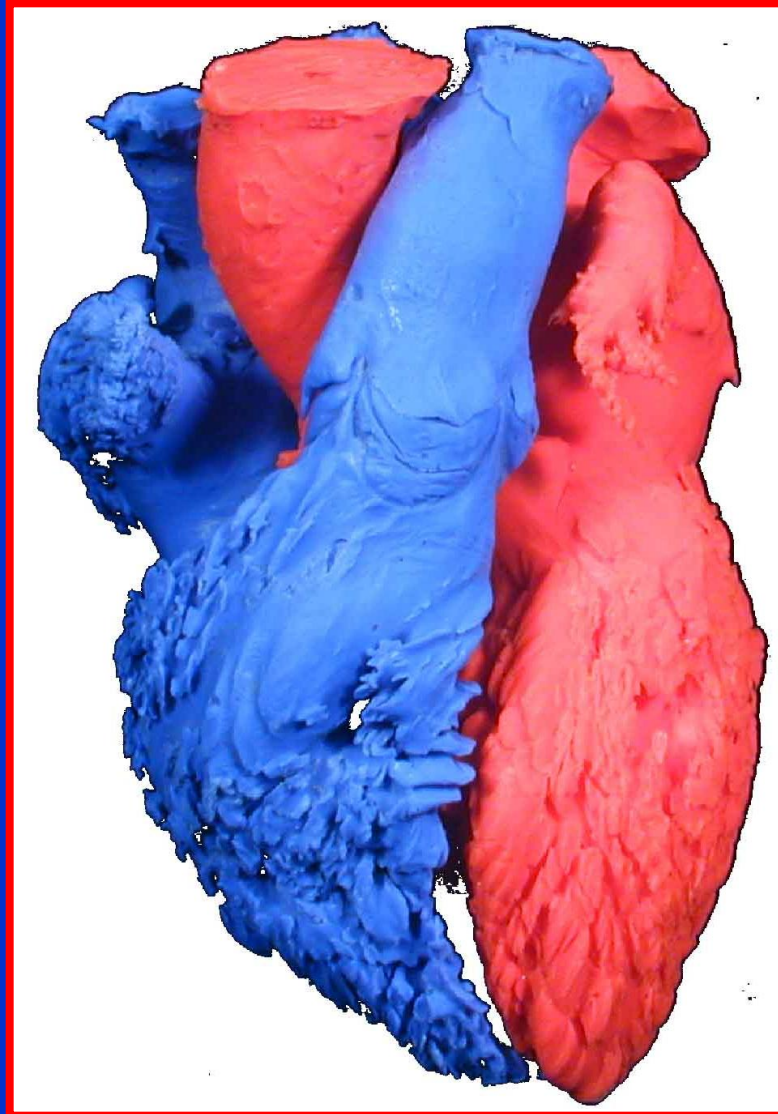


ATTITUDINAL DESCRIPTION

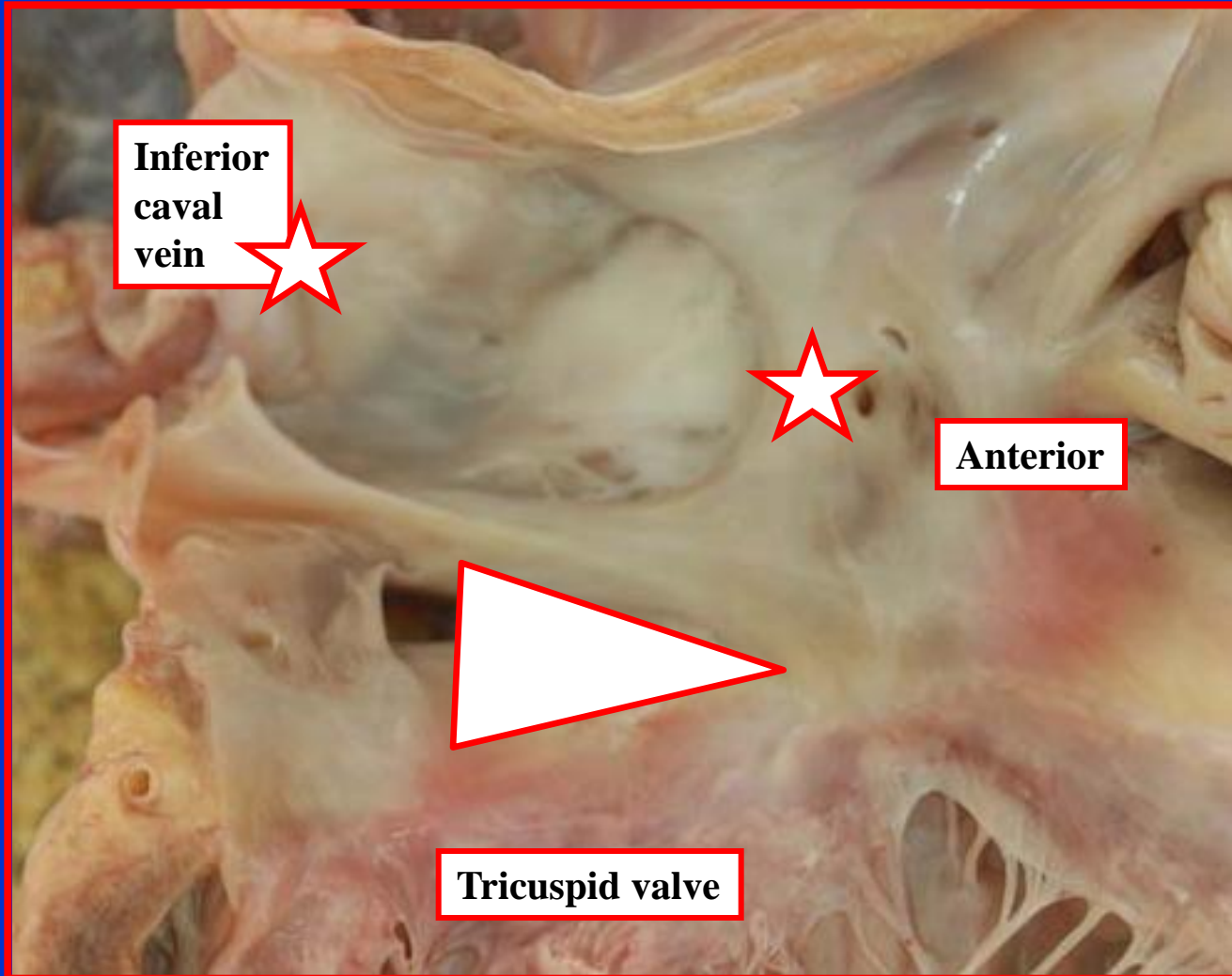




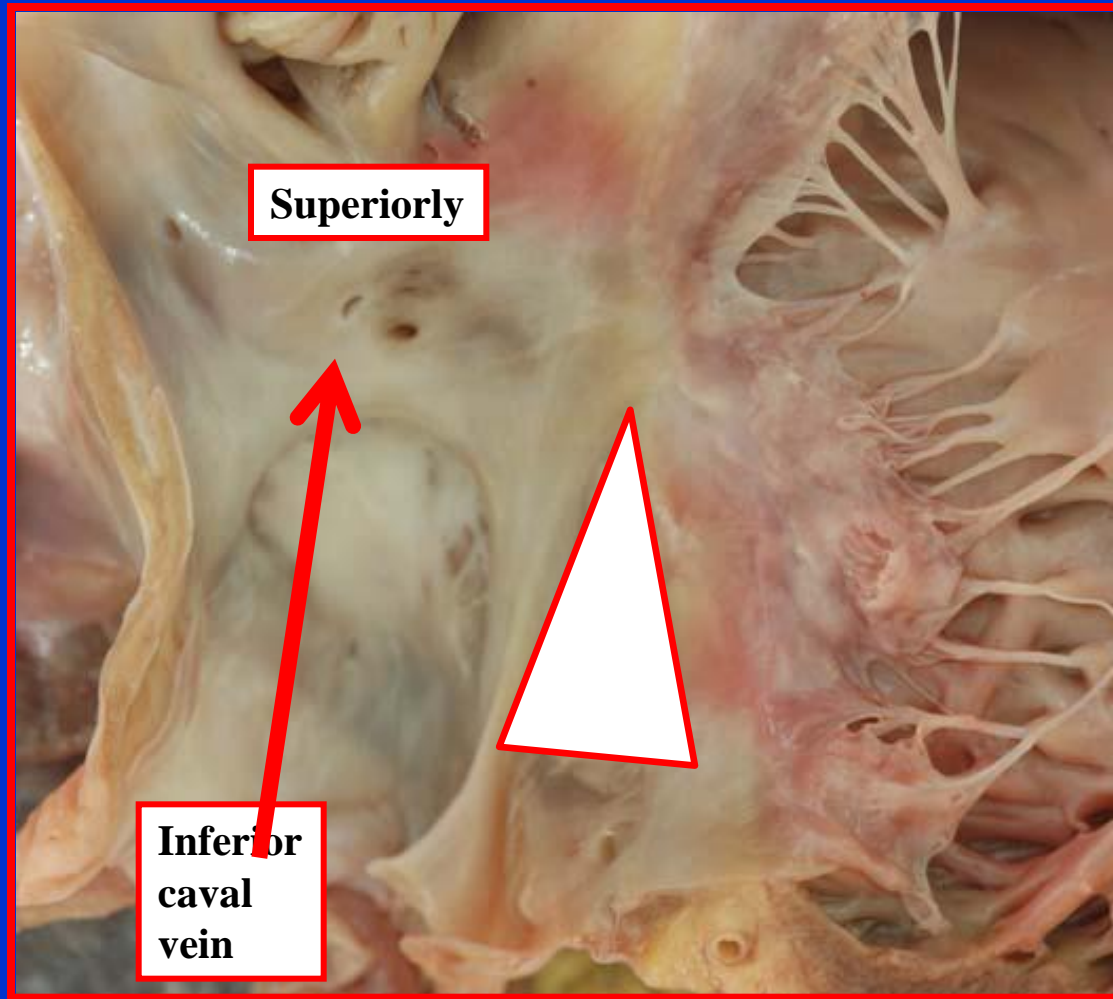


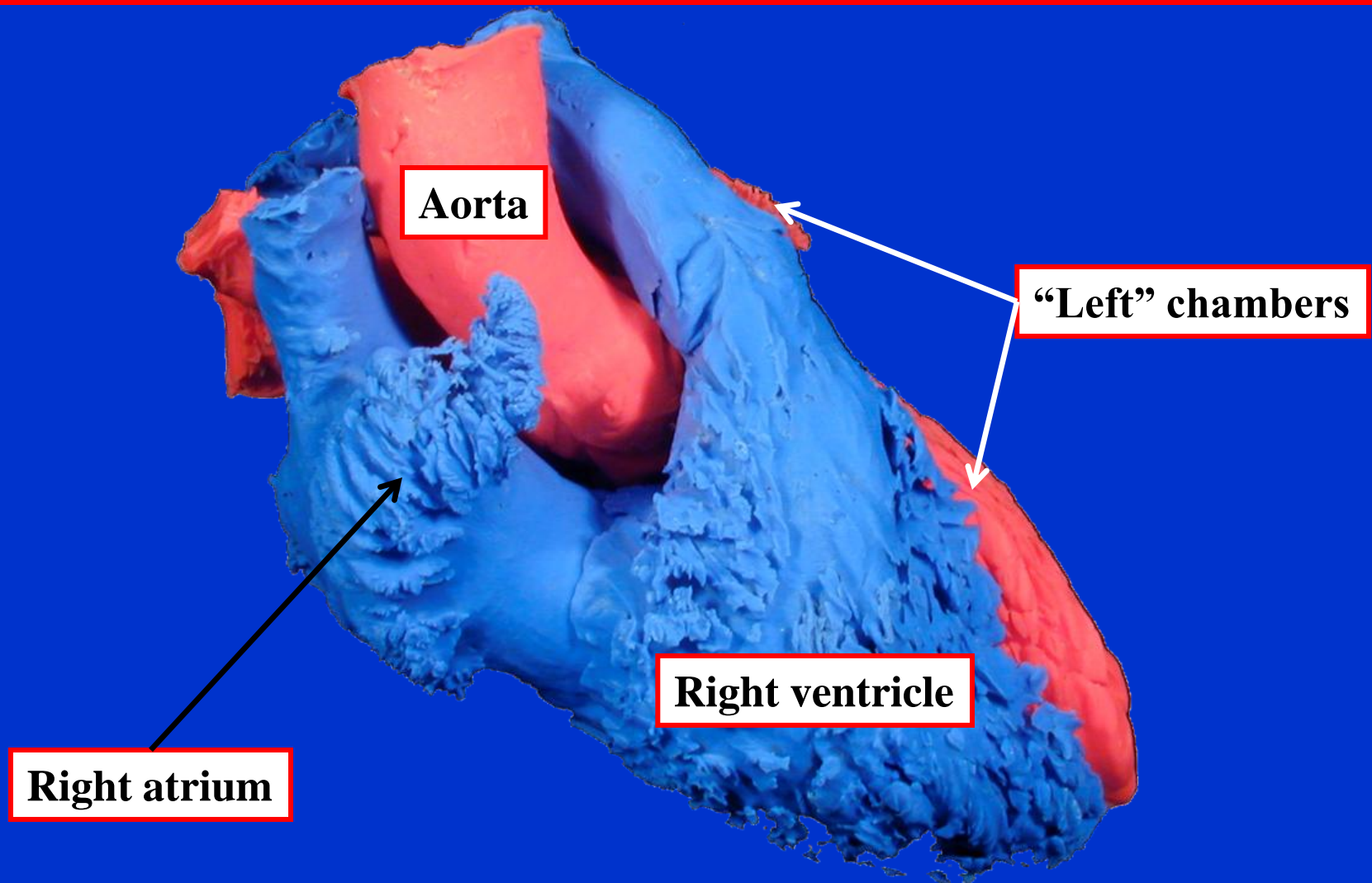


**The Valentine
Heart
Is Wrong!**

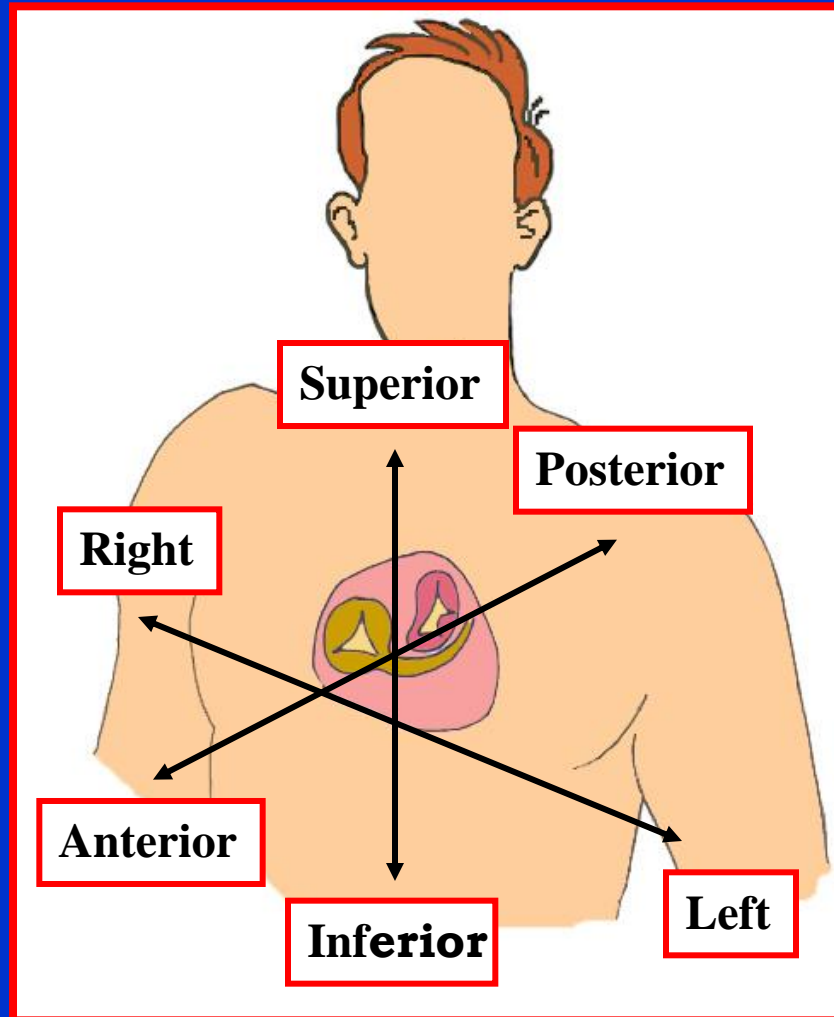


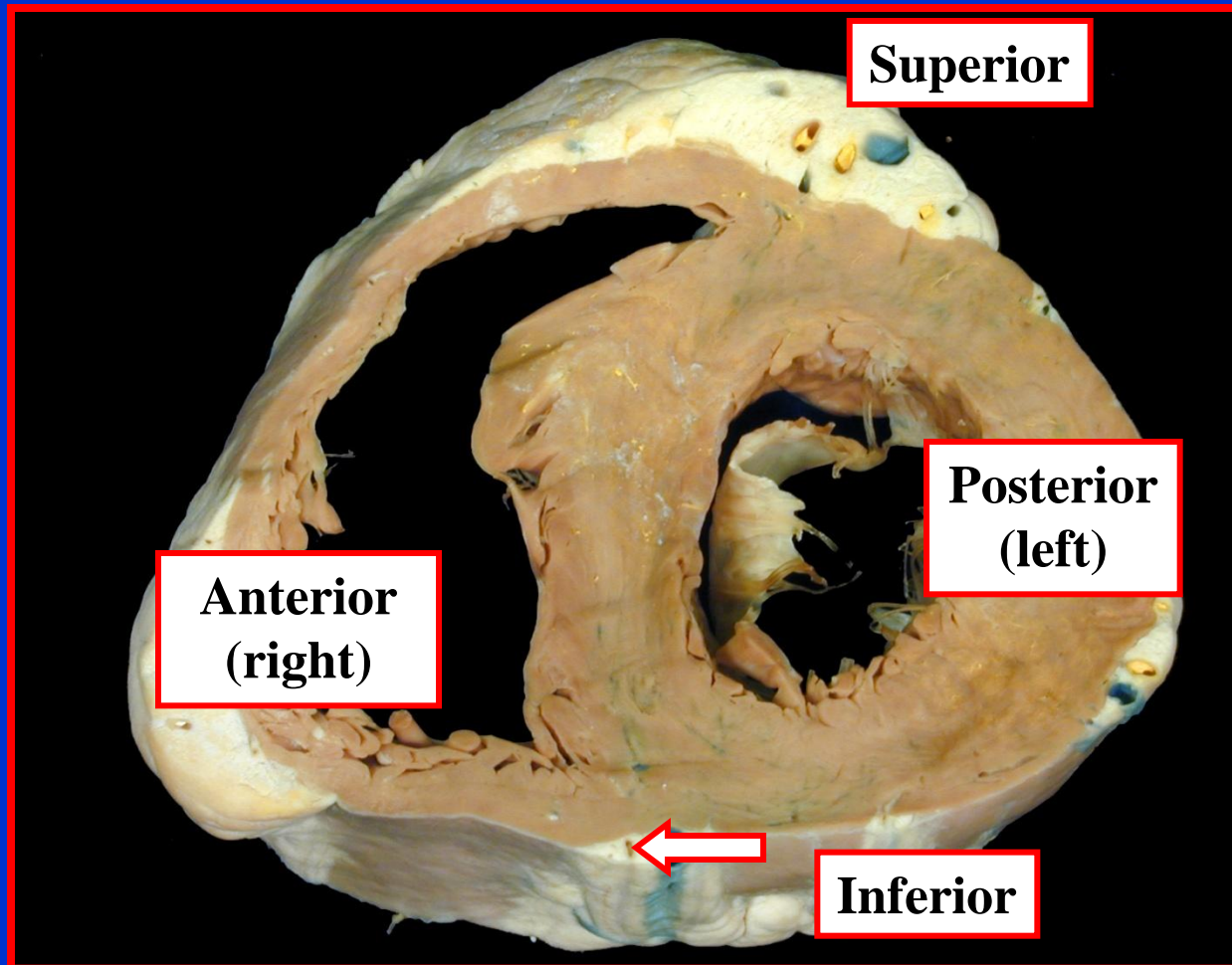
ATTITUDINAL DESCRIPTION

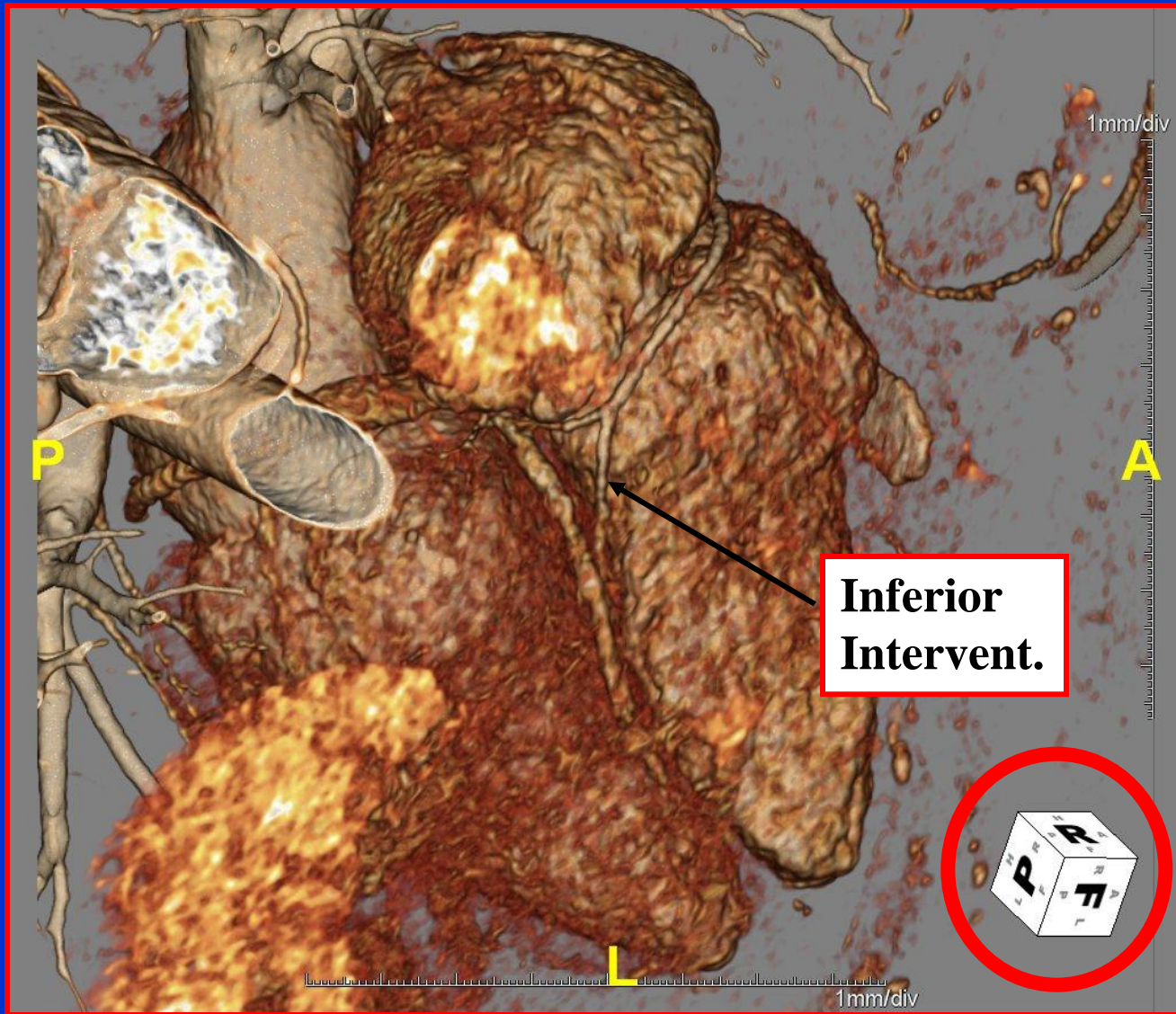


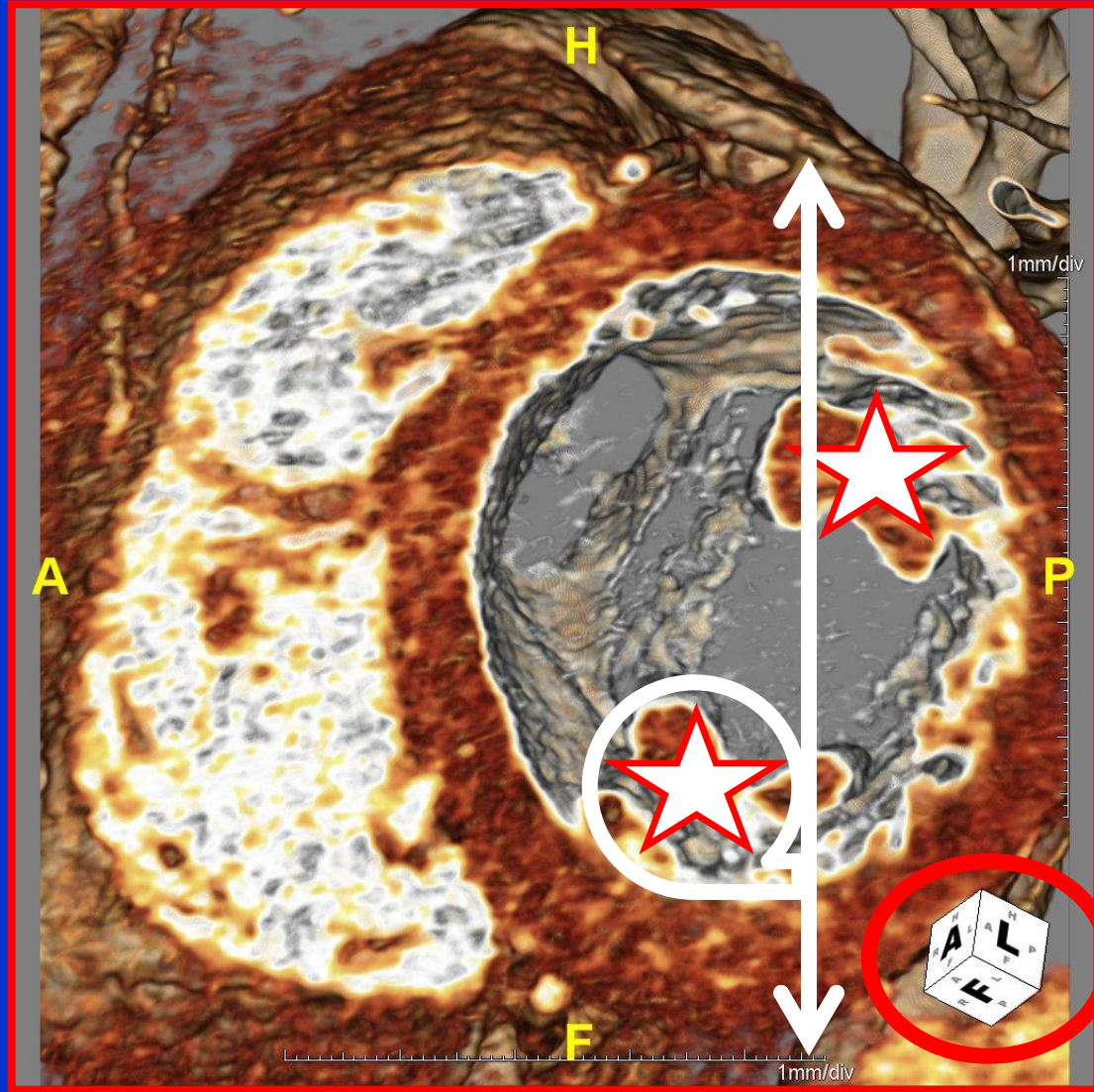


**Attitudinally correct
orientation!**









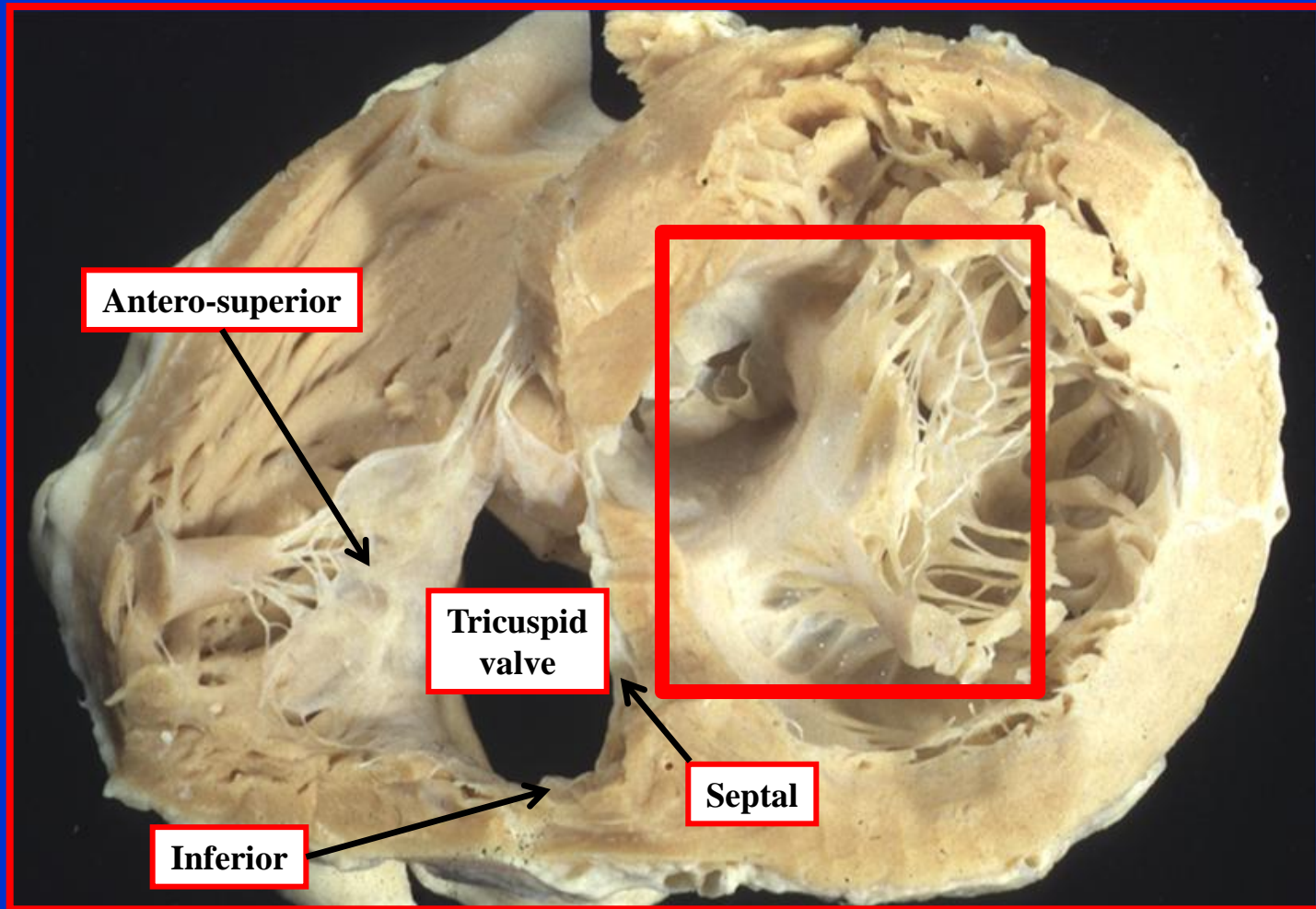
ATTITUDINAL DESCRIPTION

♥ Papillary muscles of mitral valve

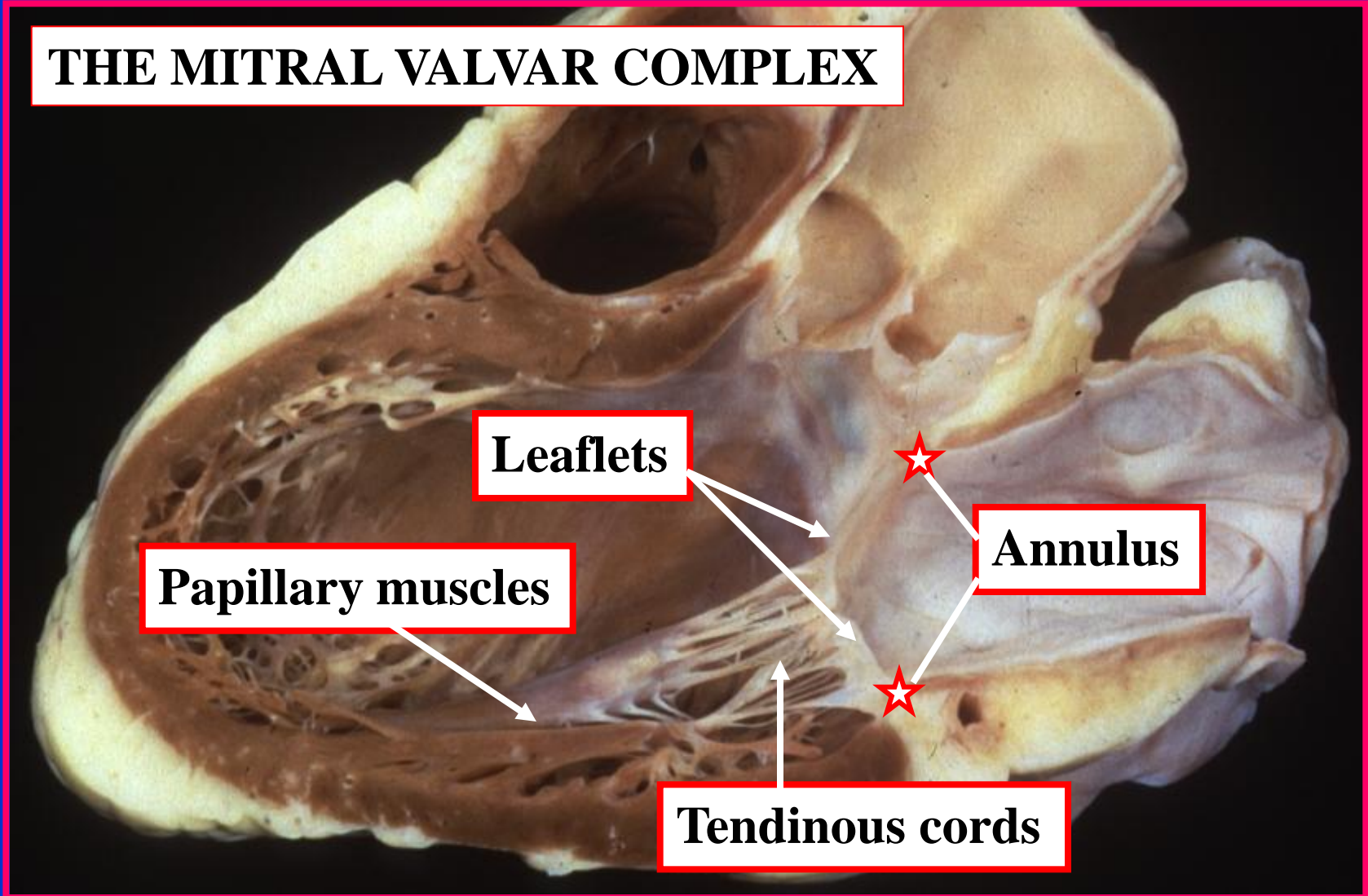
- ♥ Located infero-septally and supero-laterally

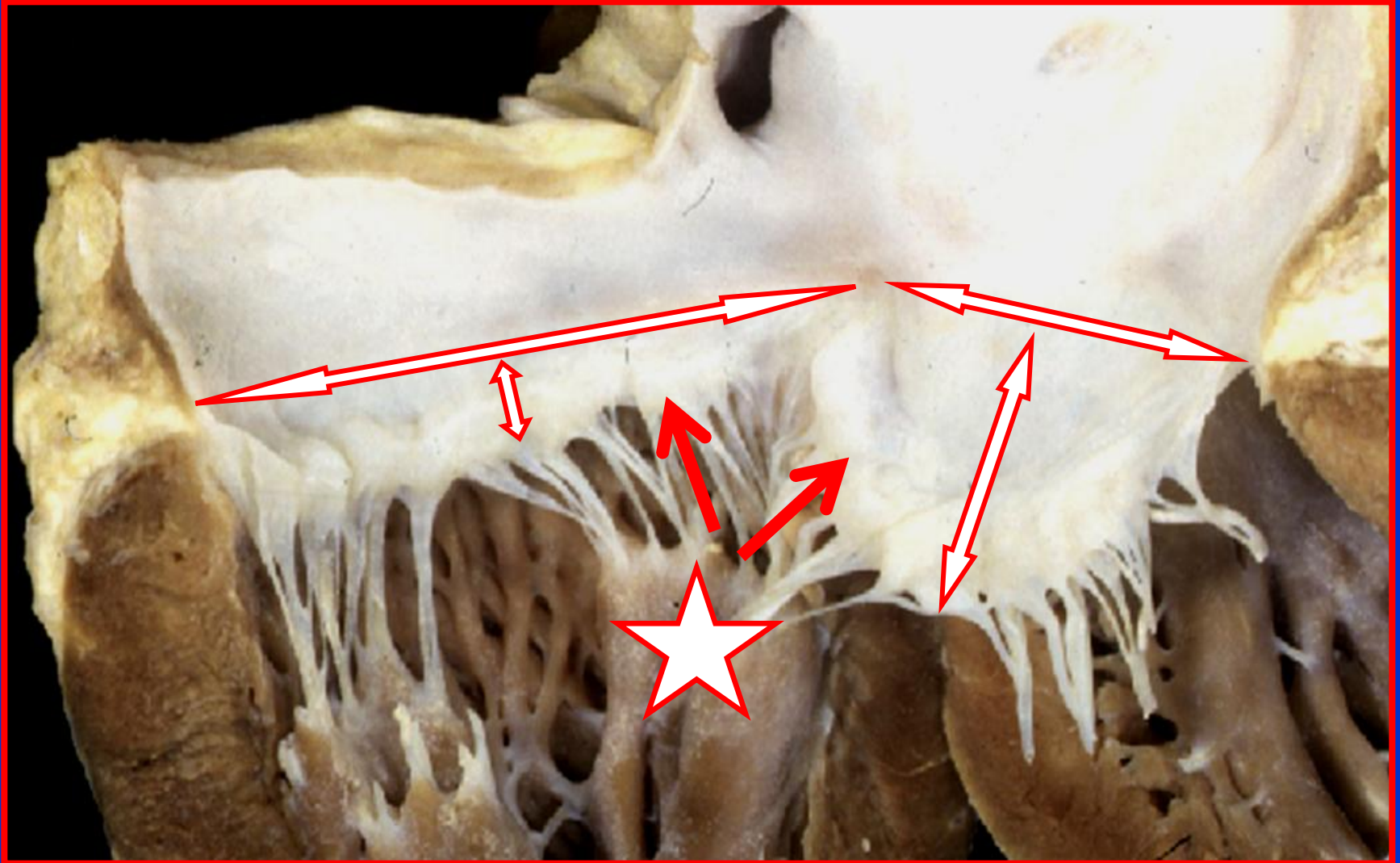
- ♥ It is wrong to describe them as being postero-medial and antero-lateral!

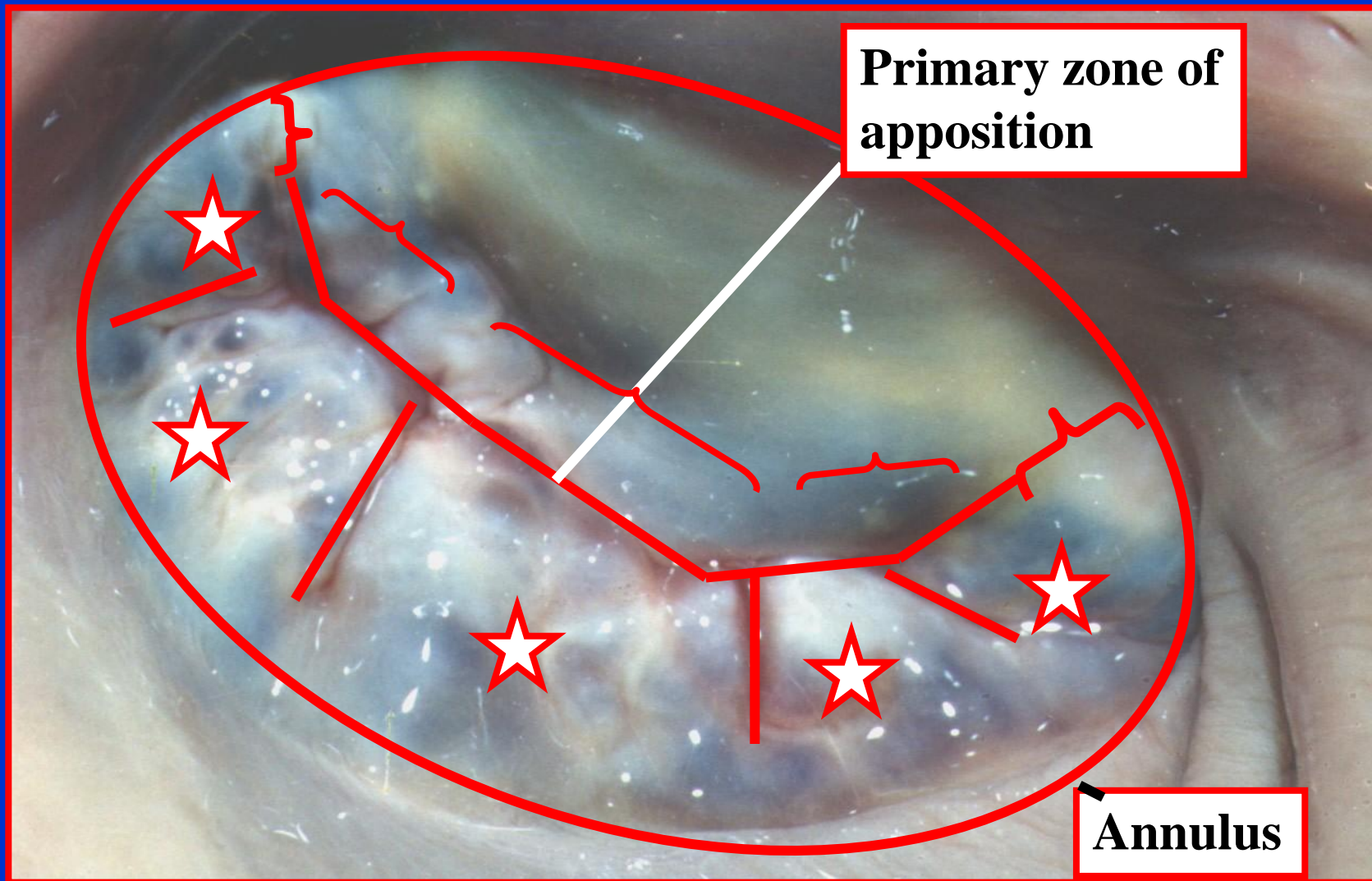
ATTITUDINAL DESCRIPTION



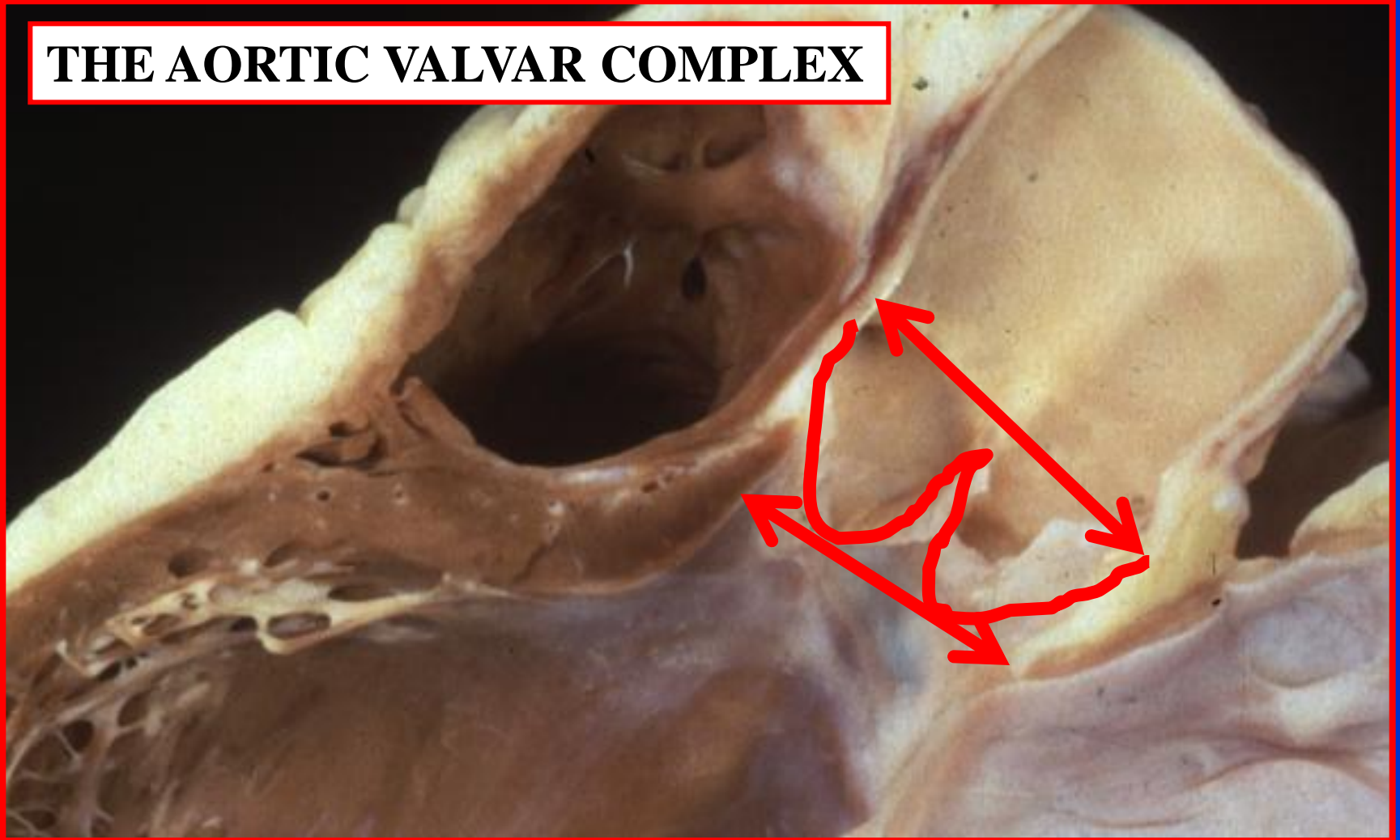
THE MITRAL VALVAR COMPLEX

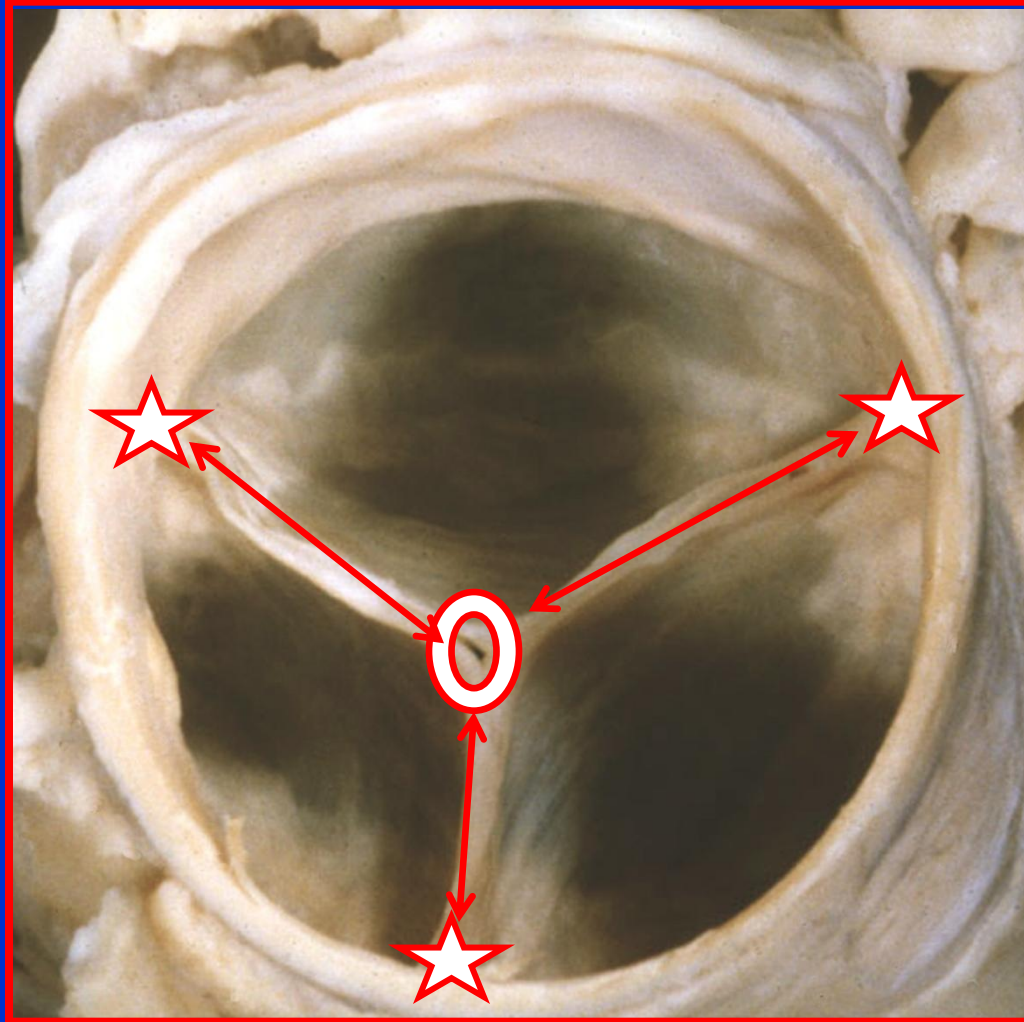




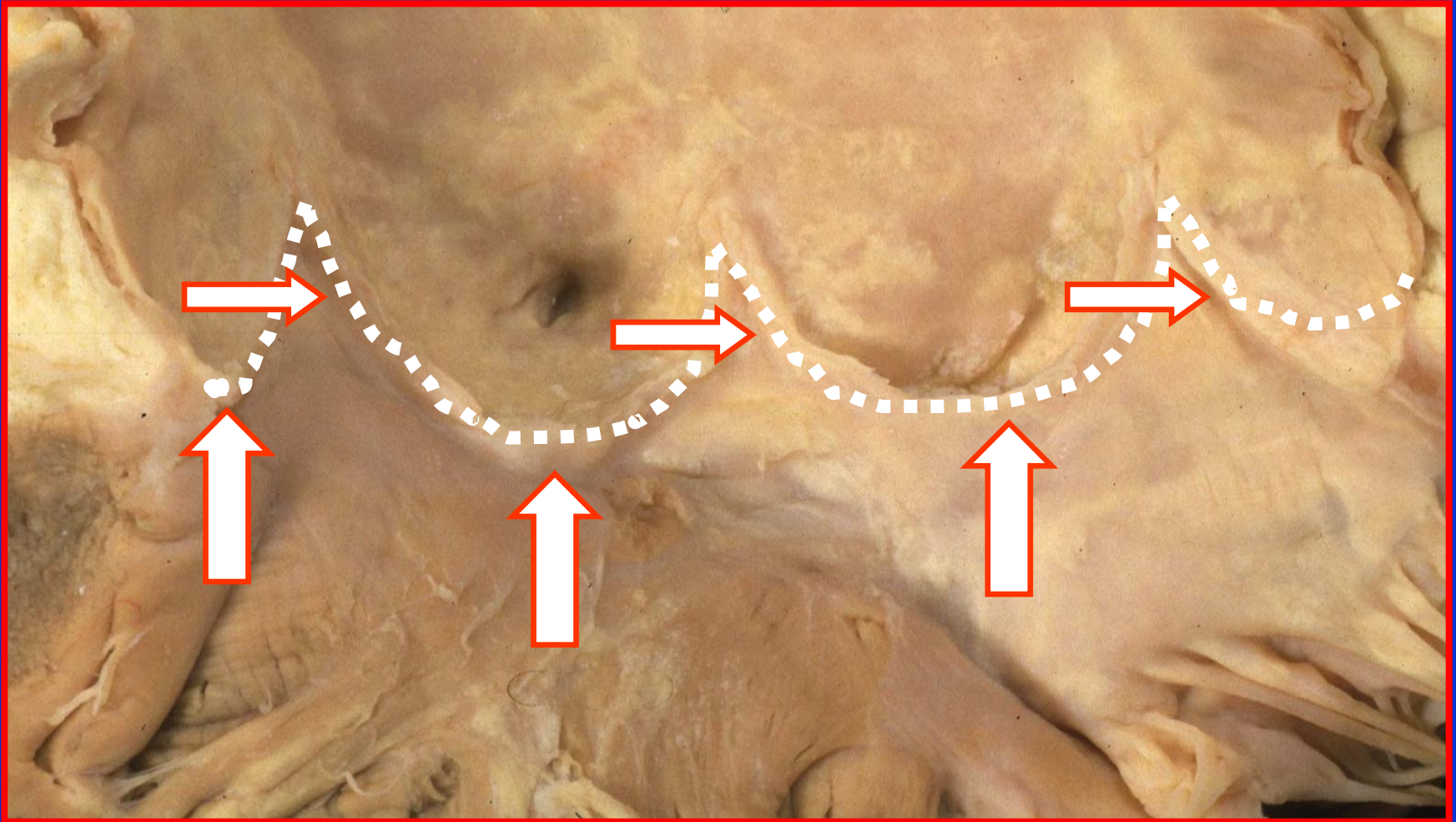


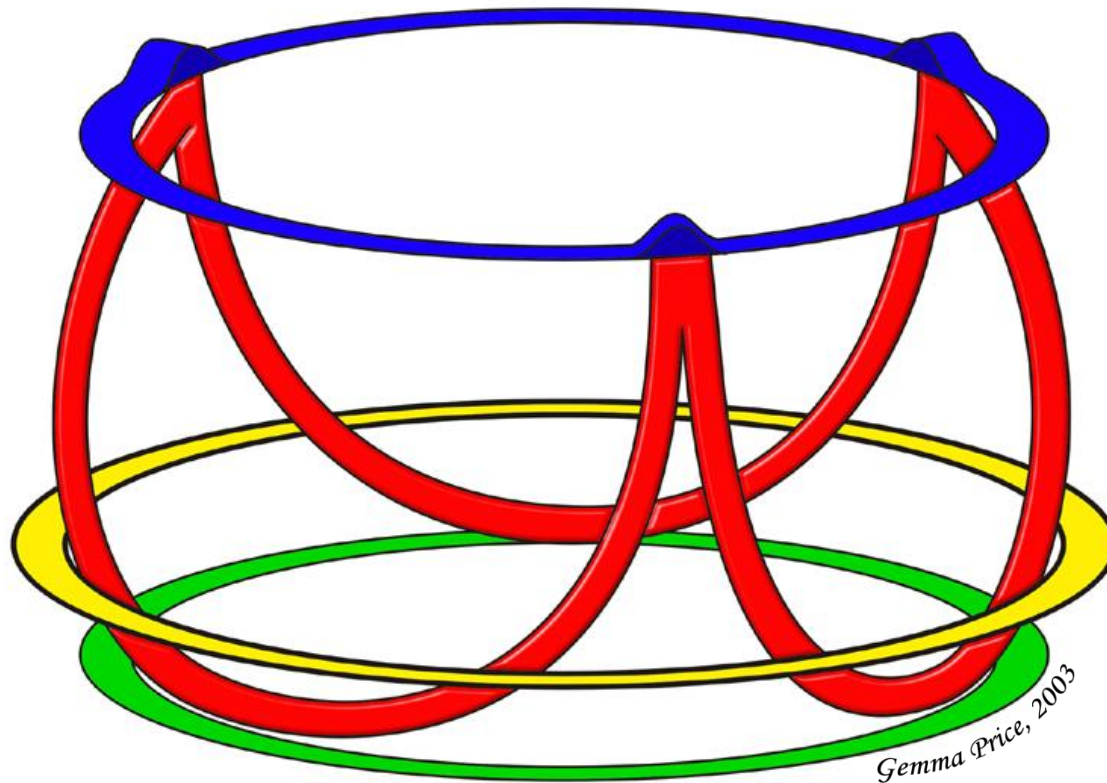
THE AORTIC VALVAR COMPLEX





VENTRICULO-ARTERIAL JUNCTIONS





Echocardiographic considerations

Sinutubular junction

-obvious ring

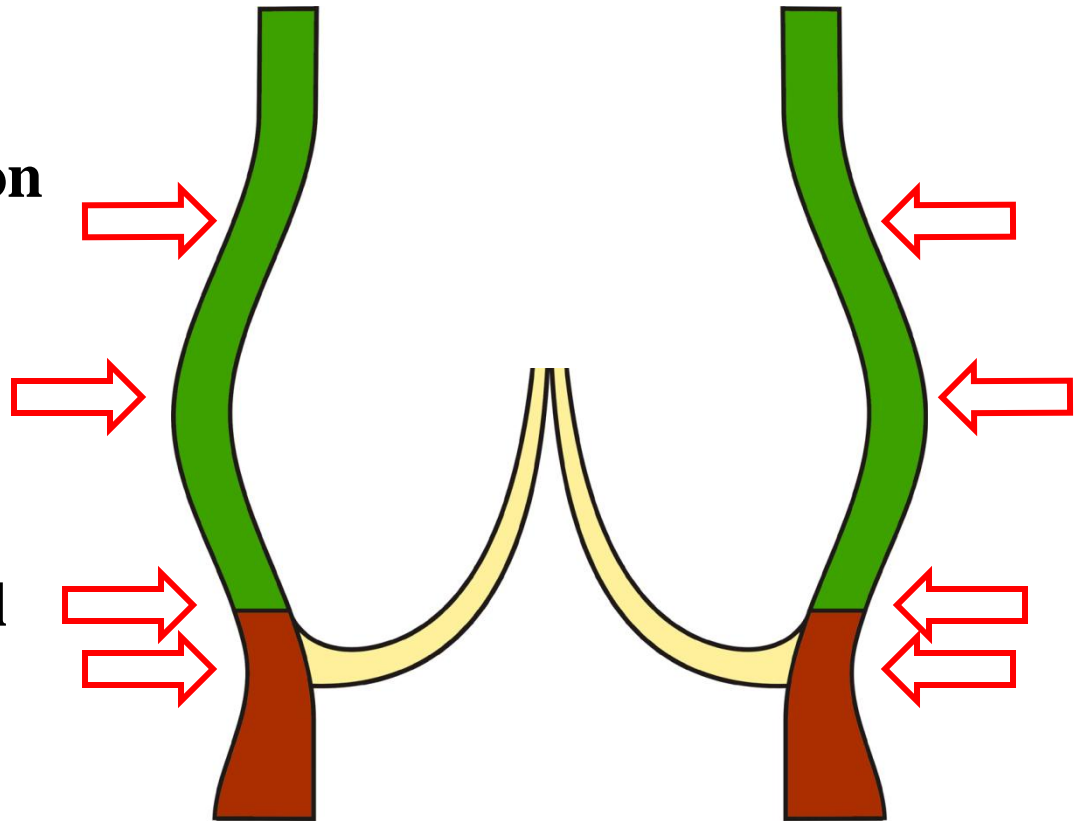
Mid-sinusal level

-no anatomic ring

Anatomic

**ventriculo-arterial
Basal Attachment
junction**

-virtual ring



Gemma Price, 2003

**Sievers H H, Hemmer W, Beyersdorf F, Moritz A,
Moosdorf R, Lichtenberg A, Misfeld M, Charitos E I.
The everyday used nomenclature of the aortic root
components: the Tower of Babel? Eur J
Cardiothorac Surg. 2012: 41; 478-482**