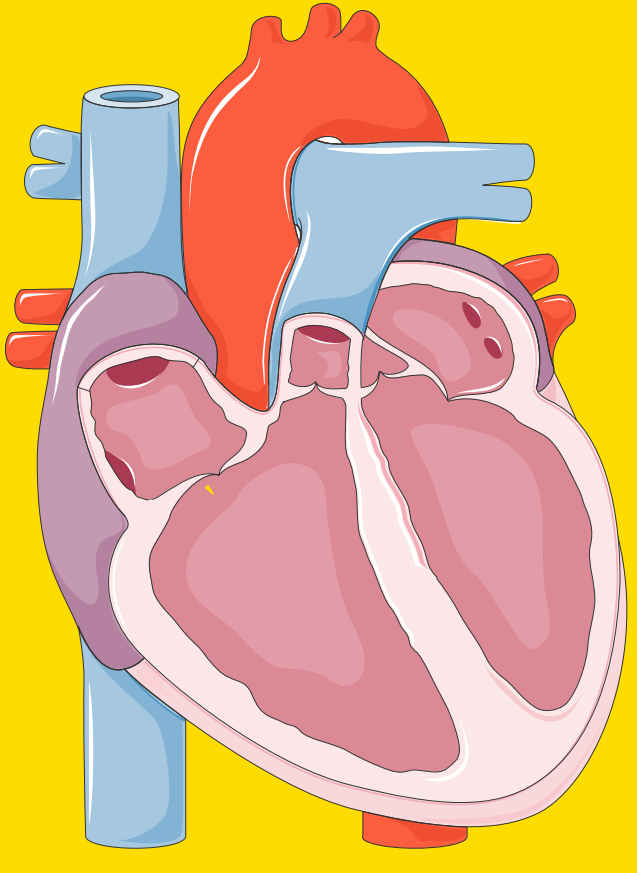




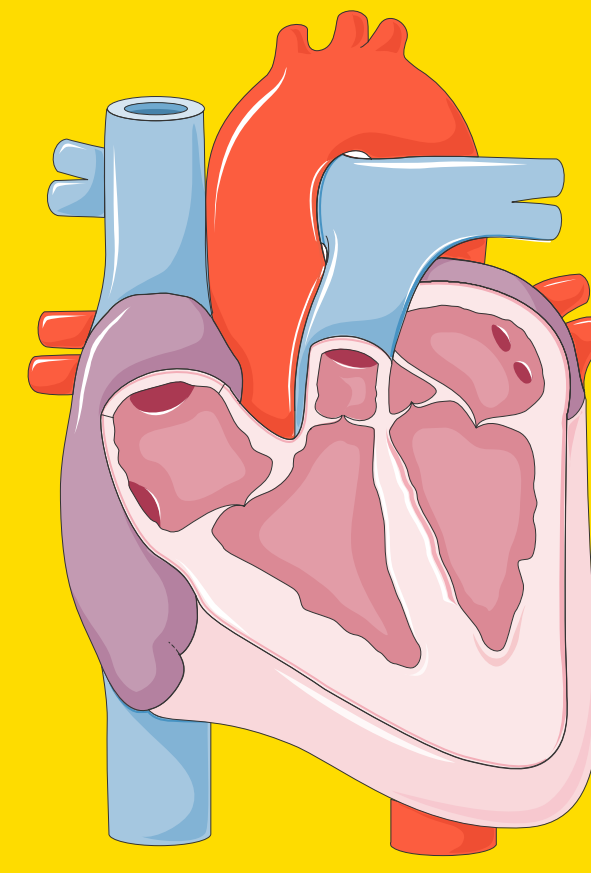
Heart Failure Awareness Days 2022

What is heart failure?

A serious condition, in which the heart muscle is unable to meet the body's demands of oxygen

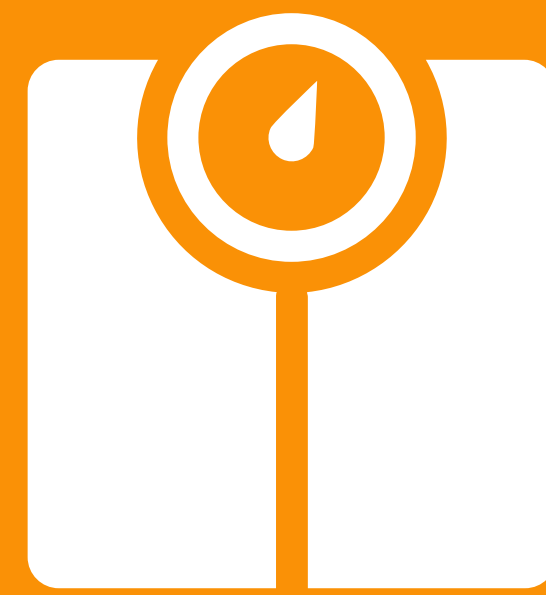


Heart failure with reduced ejection fraction
The heart muscle is unable to pump enough blood out to the body



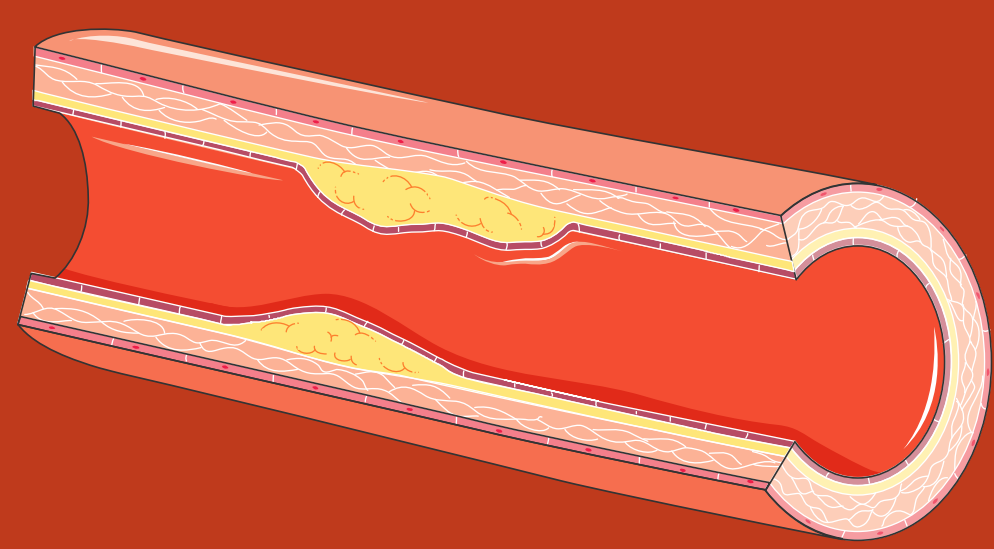
Heart failure with preserved ejection fraction
Stiffening of the heart muscle with reduced filling of blood

Symptoms of heart failure

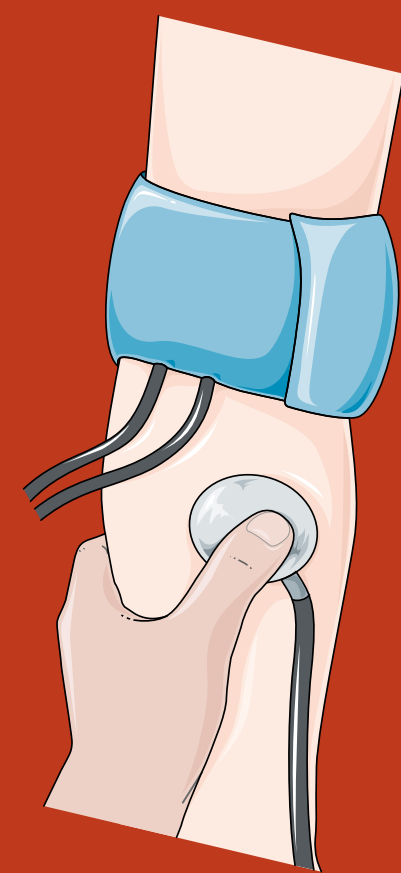


Extreme tiredness Shortness of breath Changes in weight Dizziness Trouble breathing when lying down

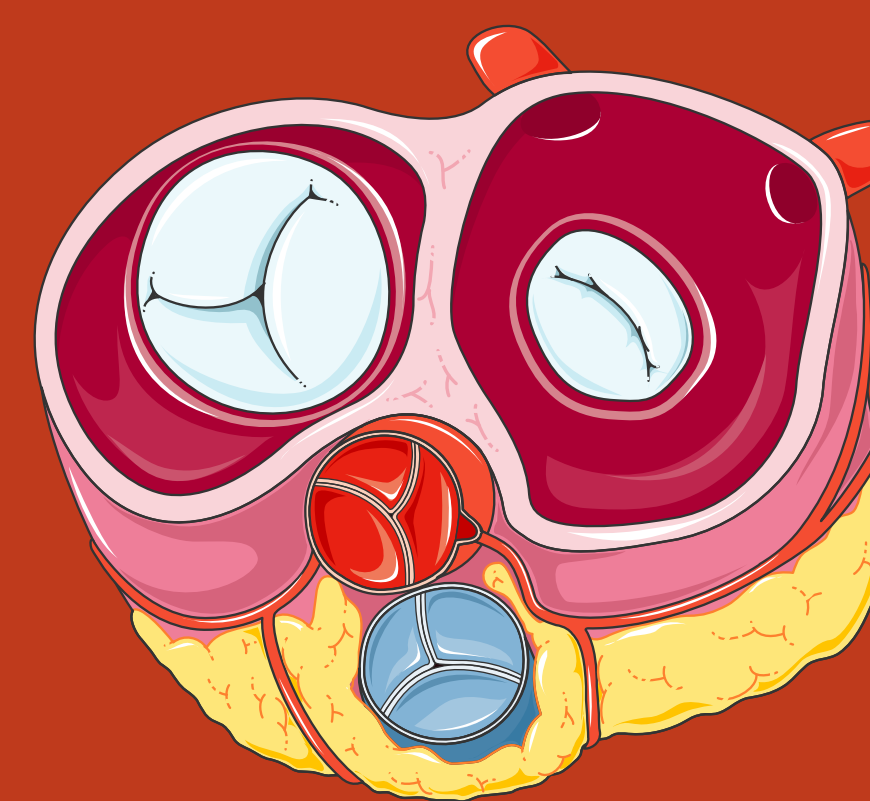
Common causes



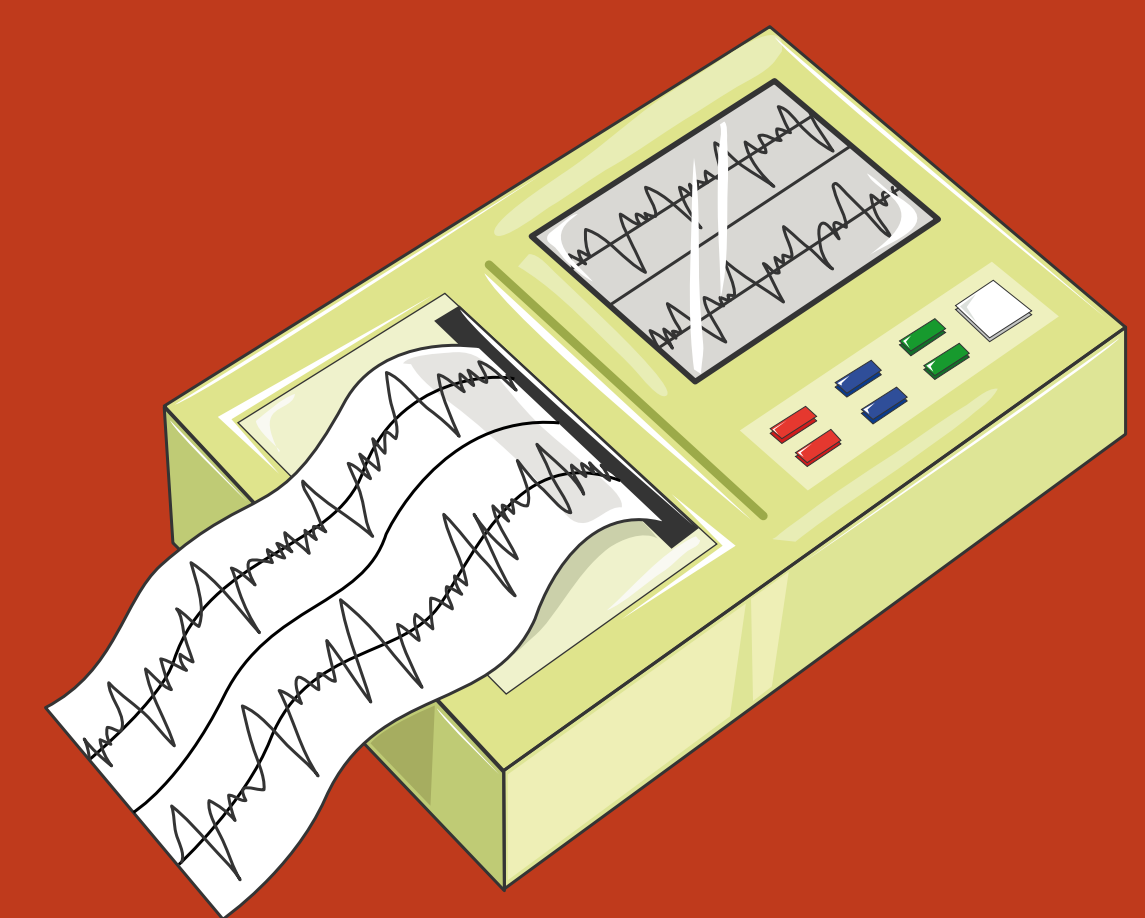
Coronary artery disease



High blood pressure



Heart valve disease



Heart rhythm disorders

Call your doctor if you suspect suffering from heart failure

Read more on heartfailurematters.org