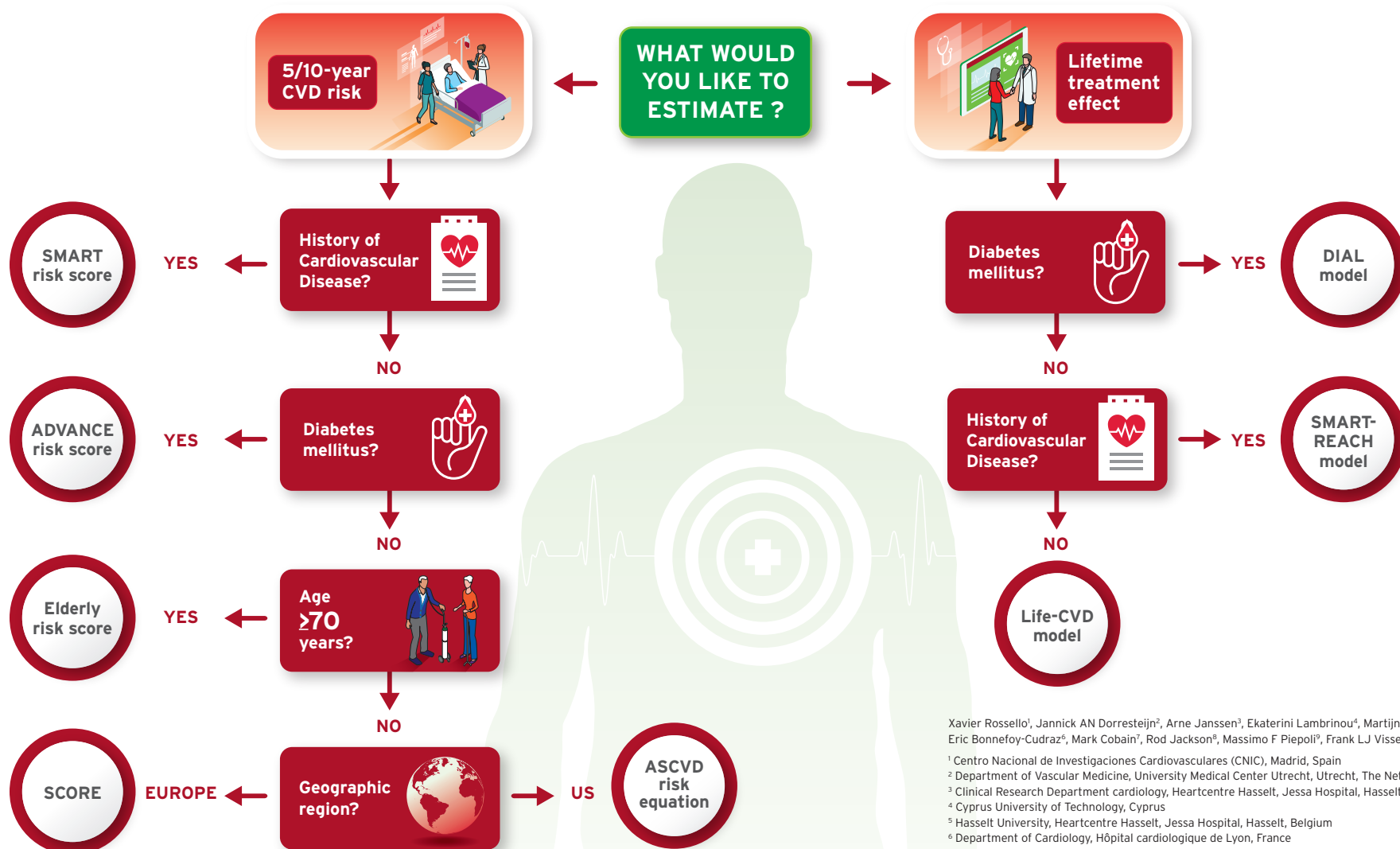


Decision aid: which risk estimation tool to use for your patient in CVD prevention



Xavier Rossello¹, Jannick AN Dorresteijn², Arne Janssen³, Ekaterini Lambrinou⁴, Martijn Scherreberg⁵, Eric Bonnefoy-Cudraz⁶, Mark Cobain⁷, Rod Jackson⁸, Massimo F Piepoli⁹, Frank LJ Visseren², Paul Dendale⁵

¹ Centro Nacional de Investigaciones Cardiovasculares (CNIC), Madrid, Spain

² Department of Vascular Medicine, University Medical Center Utrecht, Utrecht, The Netherlands

³ Clinical Research Department cardiology, Heartcentre Hasselt, Jessa Hospital, Hasselt, Belgium

⁴ Cyprus University of Technology, Cyprus

⁵ Hasselt University, Heartcentre Hasselt, Jessa Hospital, Hasselt, Belgium

⁶ Department of Cardiology, Hôpital cardiologique de Lyon, France

⁷ Department of Cardiovascular Medicine, Imperial College, London, UK

⁸ School of Population Health, University of Auckland, New Zealand

⁹ Heart Failure Unit, Cardiology, G da Saliceto Hospital, AUSL Piacenza, Piacenza, Italy