

Contrast for detection of non-compacted myocardium

Clinical Case Portal

Date of publication:

01 Dec 2011

Topics: Echocardiography (Non-invasive imaging)
Non-invasive imaging: Echocardiography, MR/CT, Nuclear

Authors:

Benoy Shah, Roxy Senior

Abstract

Case from the [Contrast Echo Box](#)
[Contrast Echocardiography for assessment of LV structure and function](#)

Introduction

- 54 year old male teacher
- Referred to Outpatients for assessment due to fatigue and shortness of breath
- Heart failure symptoms and signs, referred for echocardiography

Case Report

Resting echocardiography

Apical 4 chamber view showing severely impaired systolic function (fig 1)

Contrast-enhanced image depicting clear non-compacted myocardium in the apical region (fig 2)

Parasternal short-axis view showing severely impaired systolic function (fig 3)

Contrast-enhanced image depicting clear non-compacted myocardium in the apical region (fig 4)

Conclusion

- Hypertrabeculation, fulfilling criteria [1] for Non-Compaction Cardiomyopathy (NCCMP)
- Patient had a Cardiac MRI scan which confirmed echo diagnosis of non-compaction

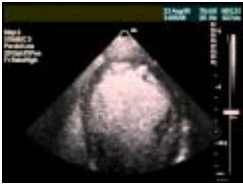
References

1 Jenni et al. [Echocardiographic and pathoanatomical characteristics of isolated left ventricular non-compaction: a step towards classification as a distinct cardiomyopathy](#). Heart 2001;86:666–71.

Video 1 :
[video 1](#)



Video 2 :
[video 2](#)



Video 3 :
[video 3](#)



Video 4 :
[video 4](#)

