

How to set up... Quality Control

Kevin Fox

Chairman,

European Association of Echocardiography,
Accreditation Assessment Committee

What is the aim of the EAE ?
(and every echocardiographer in Europe)

To raise the standard of echocardiography in
Europe

3 parts of a first class echo lab

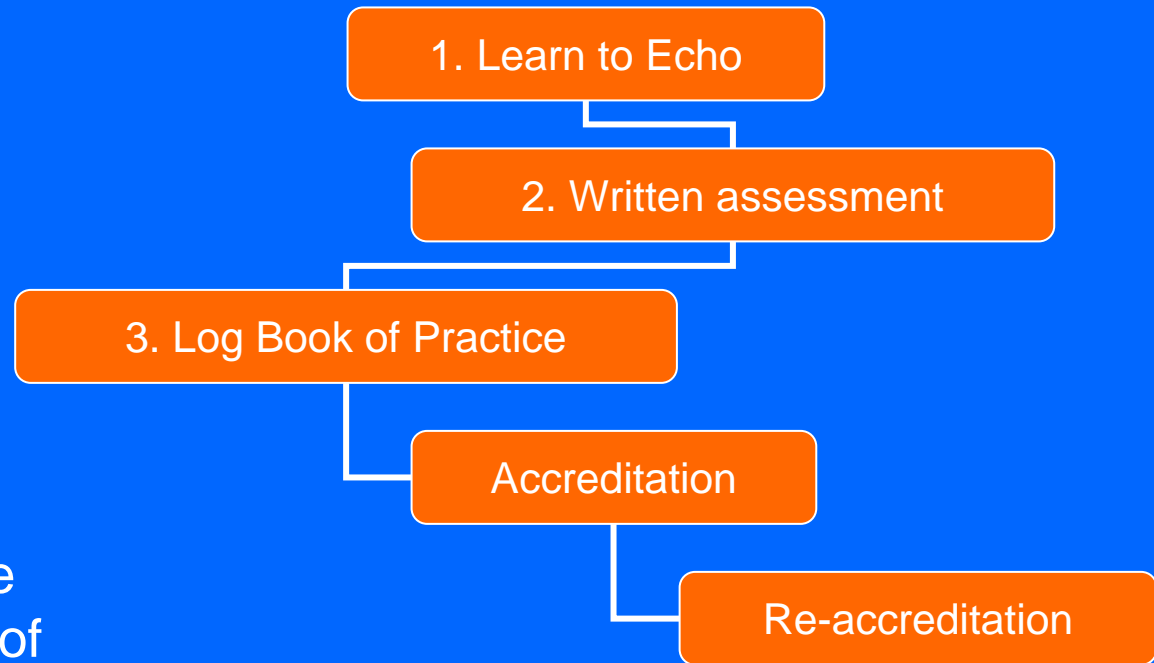
- ⌘ Good staff – Individual accreditation
- ⌘ A good laboratory – Laboratory accreditation
- ⌘ A high quality service – Quality Control

Individual Accreditation

⌘ Adult Transthoracic
Echocardiography

⌘ Adult Transesophageal
Echocardiography

📁 A collaboration with the
European Association of
Cardiothoracic
Anaesthesiologists



Laboratory Accreditation

⌘ Why has the EAE started discussions on lab accreditation?

☑ Because echocardiographers do not work in isolation

⌘ Why should your lab seek accreditation?

☑ Mark of approval

☑ Helps in getting resources (and resisting pressure on the lab)

☑ Managers often supportive

Examples of requirements under consideration

Separate requirements for TTE, TEE, DSE

Level 1 Standard		Level 2 Advanced
30 – 40 mins for studies		At least 2 EAE accredited echocardiographers
System of review for uncertain studies		Digital archiving
All machines have colour and stand alone Doppler		No machine > 5yrs since upgrade

Quality Control

Making sure everything works

- ⌘ Essential to make accredited individuals in accredited laboratories work effectively
- ⌘ This is what really matters to patients
- ⌘ Often forgotten with all the other work

Where are we now?

⌘ Very variable across Europe

- ☒ SIEC

- ☒ BSE – guidelines for stress echo

⌘ From nil to a complex quality assurance programme

⌘ More advanced in the USA

- ☒ J Am Soc Echo 1995 - Recommendations for continuous quality improvement in echocardiography ASE

- ☒ ASE guidelines for trials

- ☒ ICAEL Intersociety Commission for Accreditation in Echocardiography

⌘ More advanced for DSE than TTE or TEE

Elements of a QC Programme

Keep it simple

- ⌘ Equipment
- ⌘ Staff CME
- ⌘ Staff Activity
- ⌘ Internal routine review
- ⌘ Formal review
- ⌘ Measurement QC

You are probably doing much of this already!

Equipment

- ⌘ Have an equipment maintenance policy
- ⌘ Have an equipment maintenance log

That's it!

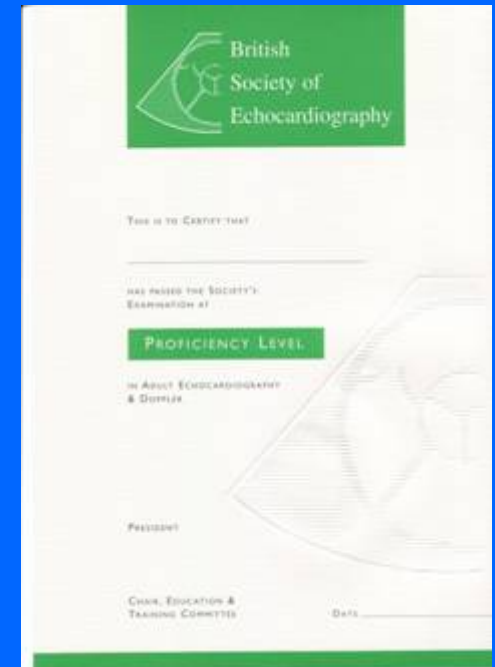


Staff Activity and CME

⌘ Have a record of staff workload and individual staff competences and CME

⌘ Set targets for CME

That's it!



Internal review

- ⌘ Most labs have a system for asking senior members of staff for advice and sharing interesting case
- ⌘ – keep a record of this activity

That's it!

Formal (random) review of reporting

⌘ First steps

- ☑ It is just a small step to finish each meeting with a random case drawn from the weeks activities and to review it (or ask the sonographer to defend their report)

⌘ Next steps

- ☑ Blind random review in a group or singly
- ☑ Compare data with outcomes of caths, nuclear, MR studies
- ☑ Random review between departments or nationally / internationally

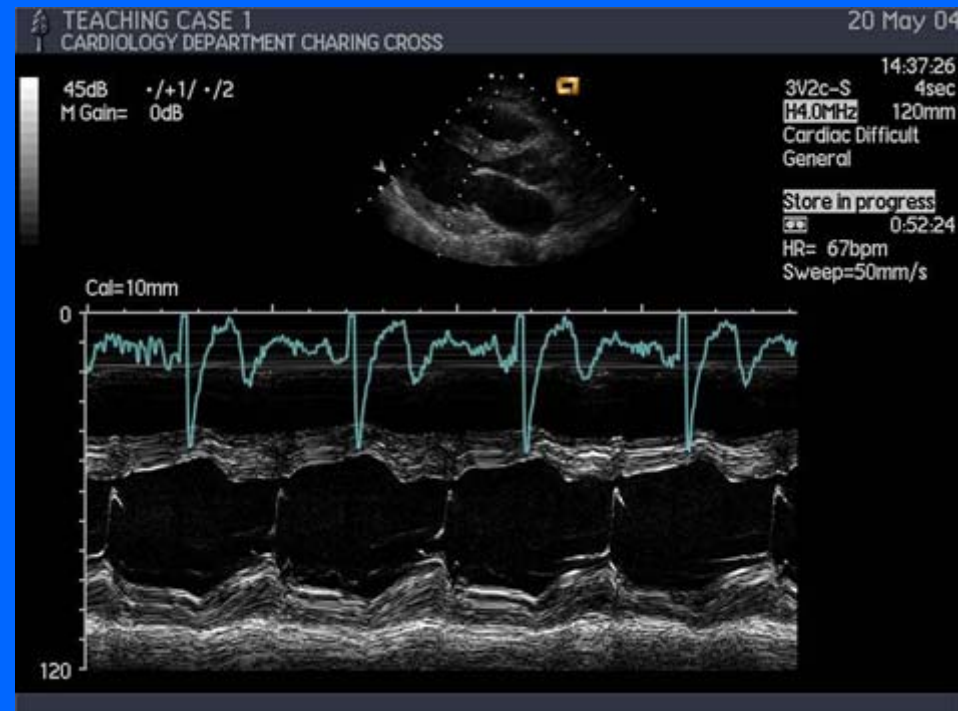
Measurement QC

⌘ Probably the last thing on our minds
.....*but*

- ☑ Increasing importance of quantitation
- ☑ We do it for research – do our regular patients deserve less?

⌘ Re-measuring

- ☑ Inter and intra observer
- ☑ Within and across departments



Overall

It may be simpler than you think

⌘ Step 1 – document current activities

☑ You may be doing more than you think

⌘ Step 2 – Introduce a small element of QC

☑ The benefits may be greater than you might expect

That's it!

(Make sure you keep good records)

So....what's stopping you?

⌘ Can start simply

- ☑ Weekly meeting

⌘ Build up

- ☑ Random review, random re-reporting, quiz / test cases

⌘ A formal programme

- ☑ Validation of measurements and reporting, external collaboration

What do we ask of you?

- ⌘ Encourage accreditation
- ⌘ Ask (fight) for a well staffed and resourced echo lab
- ⌘ Quality in every study you do

Conclusions

The EAE seeks to raise the standard of echocardiography

⌘ This will require high *quality* practitioners of echo

☑ TTE and TEE individual accreditation programmes

☑ Already established

⌘ This also requires high *quality* echo labs

☑ Lab Accreditation is being developed

⌘ This will require high *quality* studies performed by high *quality* practitioners in high *quality* echo labs

☑ Quality Control programmes will show that this is happening
AND encourage it to happen

www.escardio.org/associations/EAE

