

The implication of a change in MI criteria for clinical trials

Elliott M. Antman, M.D.

Brigham and Women's Hospital

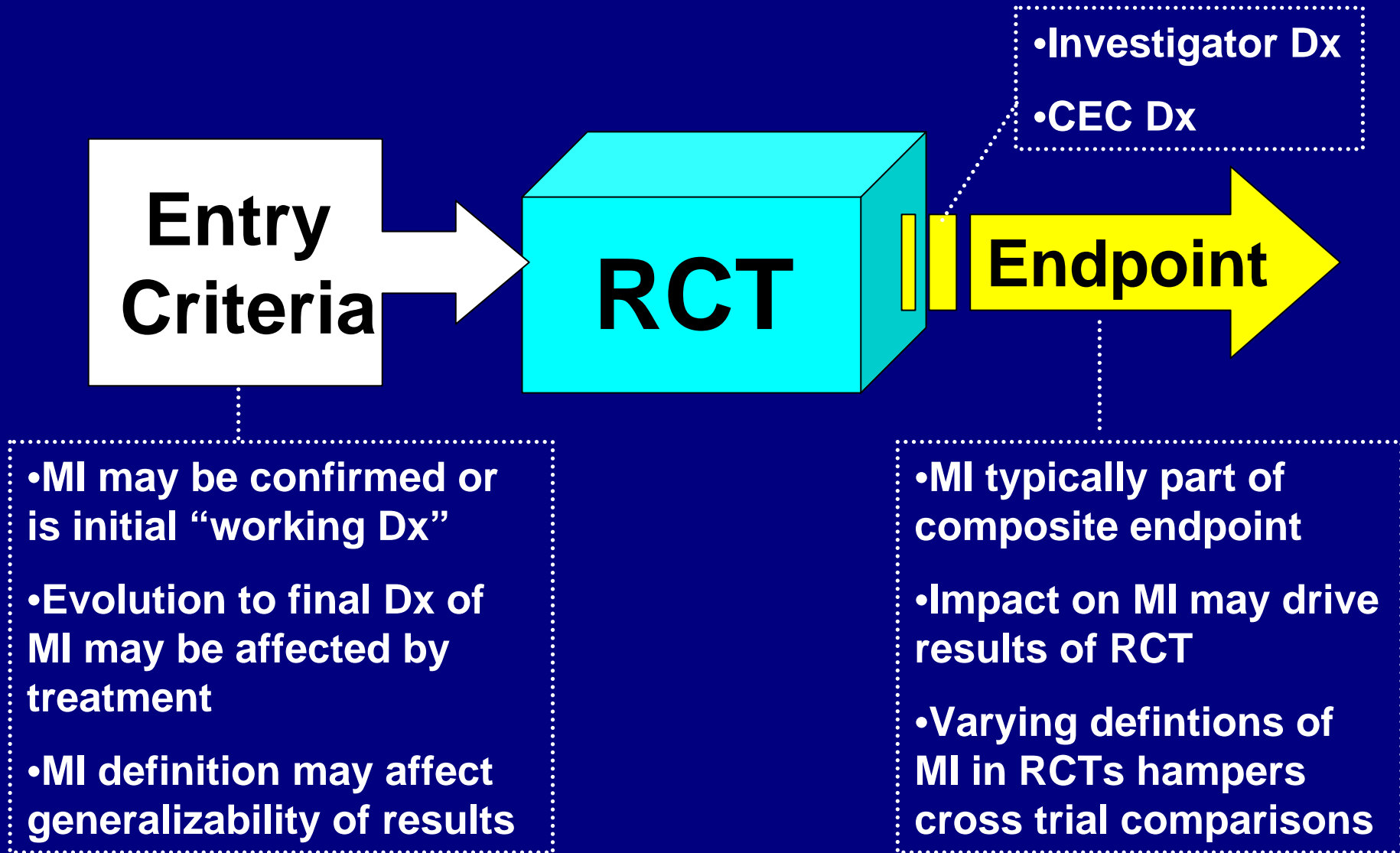
Boston, MA

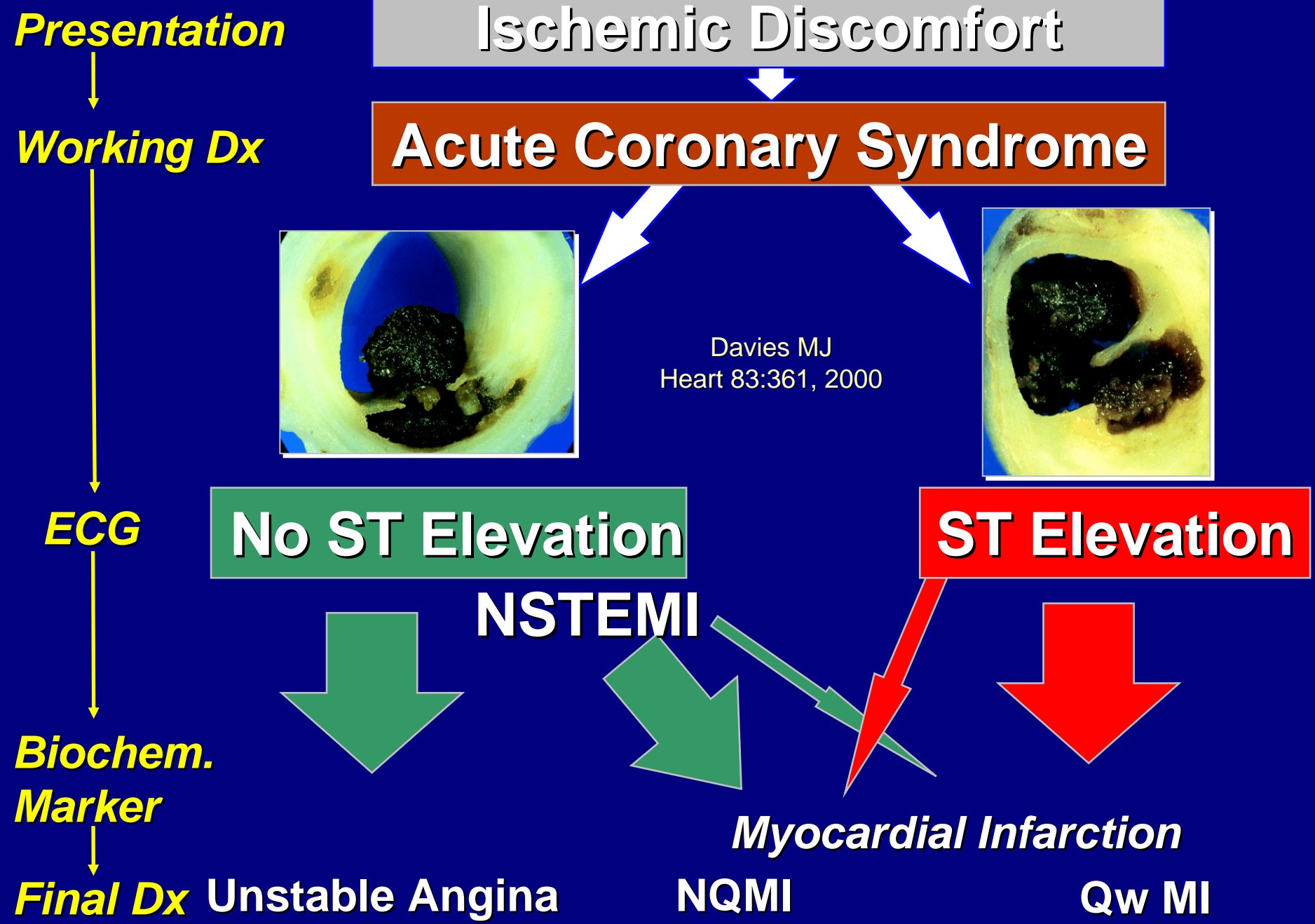
ESC 2005

Stockholm, Sweden

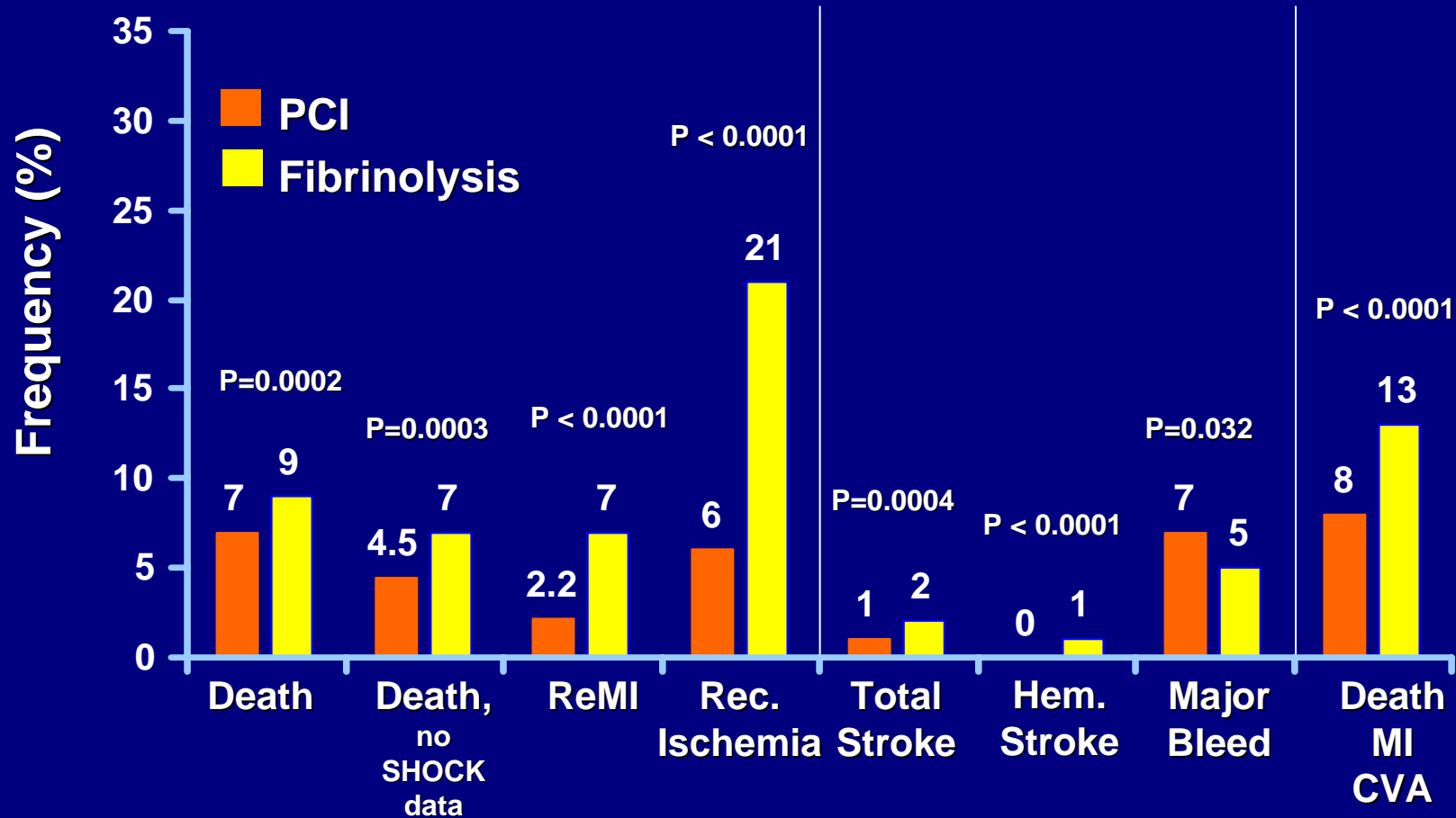
*Disclosures: Research Grants via TIMI Study Group from--
Sanofi-AVENTIS, Bayer, Biosite, Boehringer Mannheim, BMS, British Biotech, Centocor,
Cor/Millennium, Corvas, Dade, Genentech, Eli Lilly, Merck, Pfizer, Sunol Molecular, Sankyo,
Roche*

MI in Clinical Trials



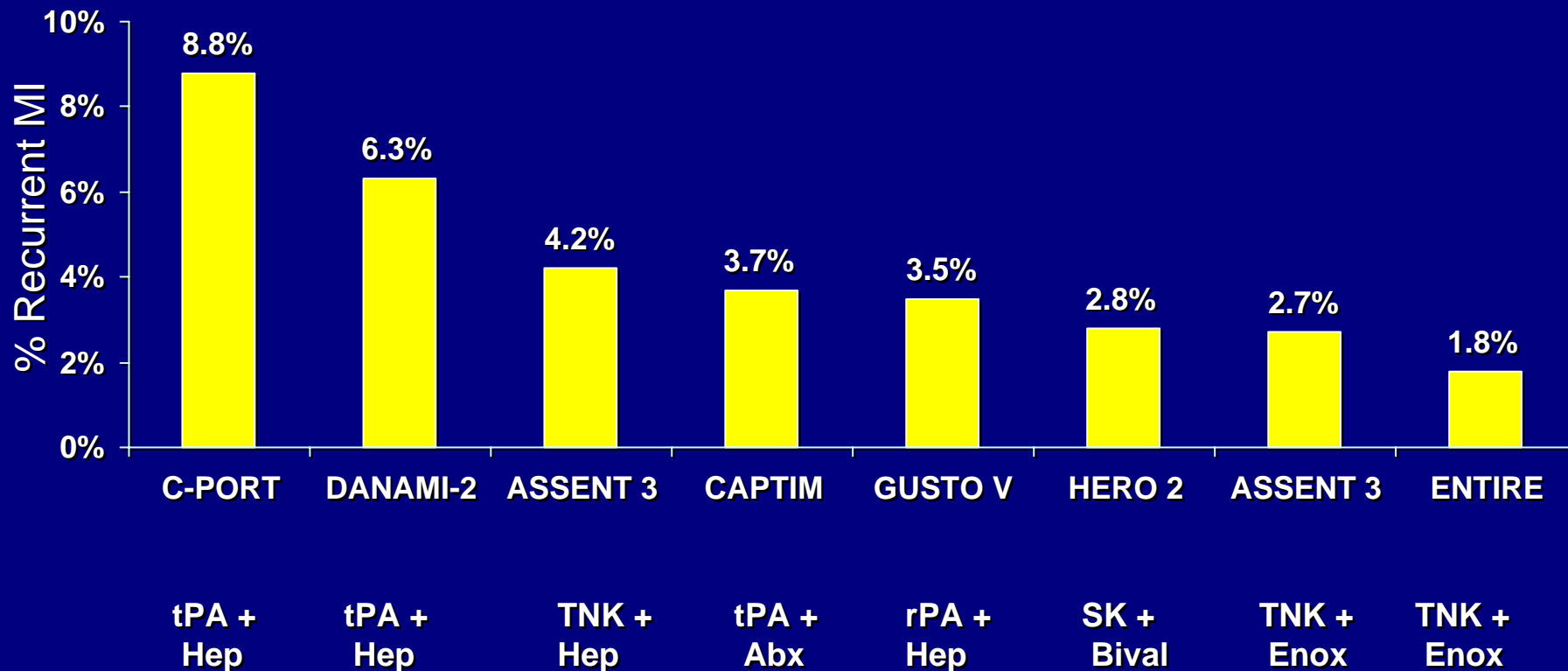


PCI vs Fibrinolysis for STEMI: Short Term Clinical Outcomes



N = 7739

Recurrent MI after Fibrinolysis for STEMI: Comparative Rates



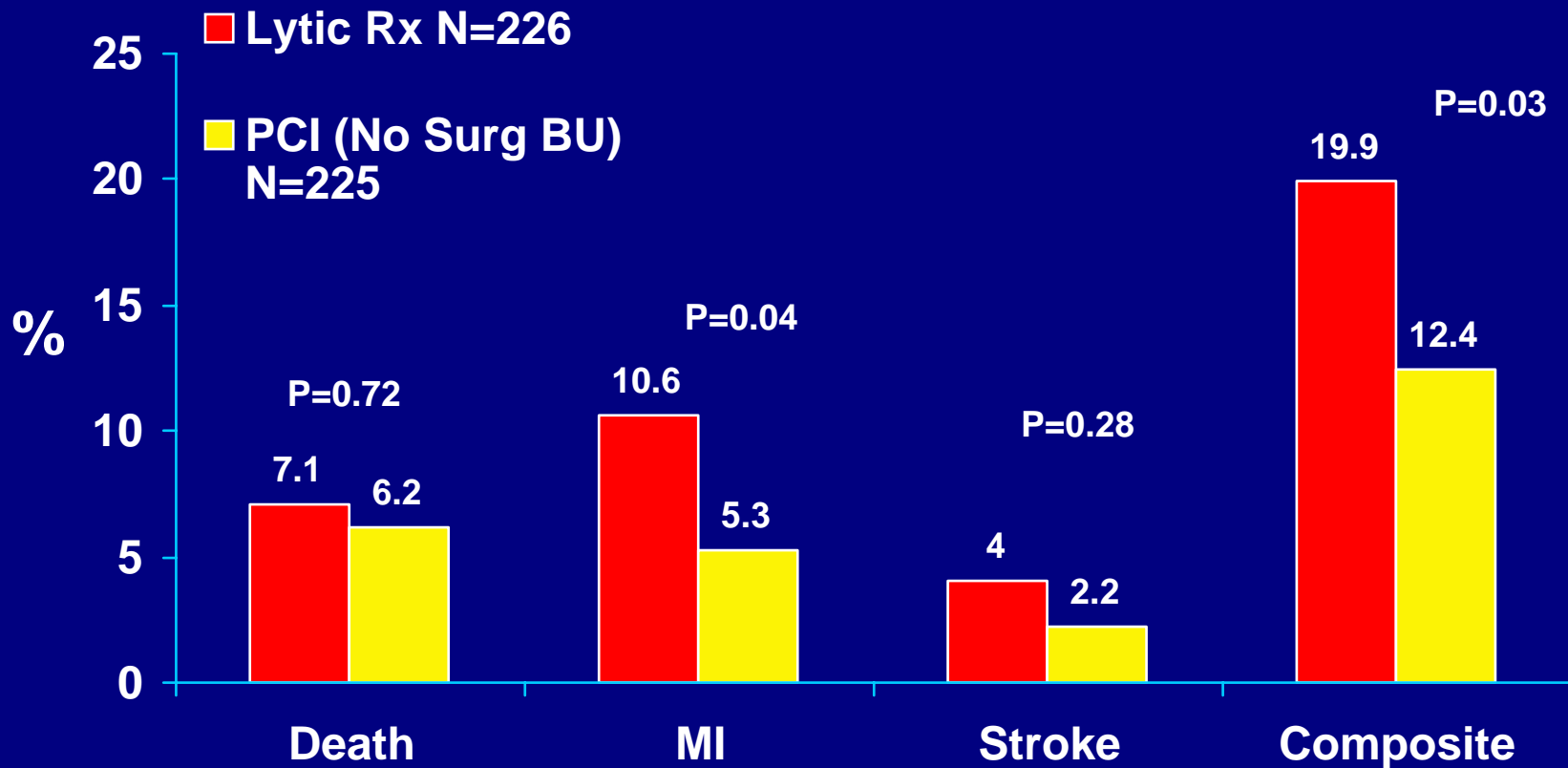
Armstrong PW, Colleen D, Antman EM

Fibrinolysis for Acute MI: The Future is Here and Now *Circ* 107:2533,2003

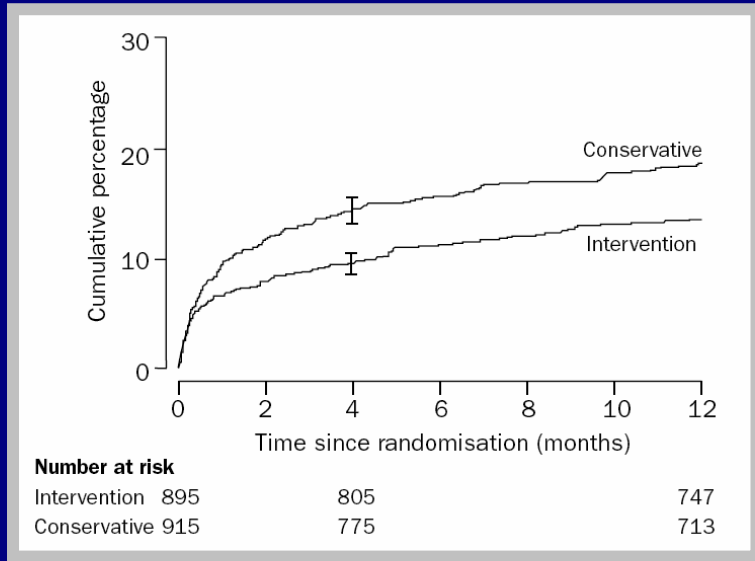
C-PORT Trial

JAMA 287: 1943, 2002

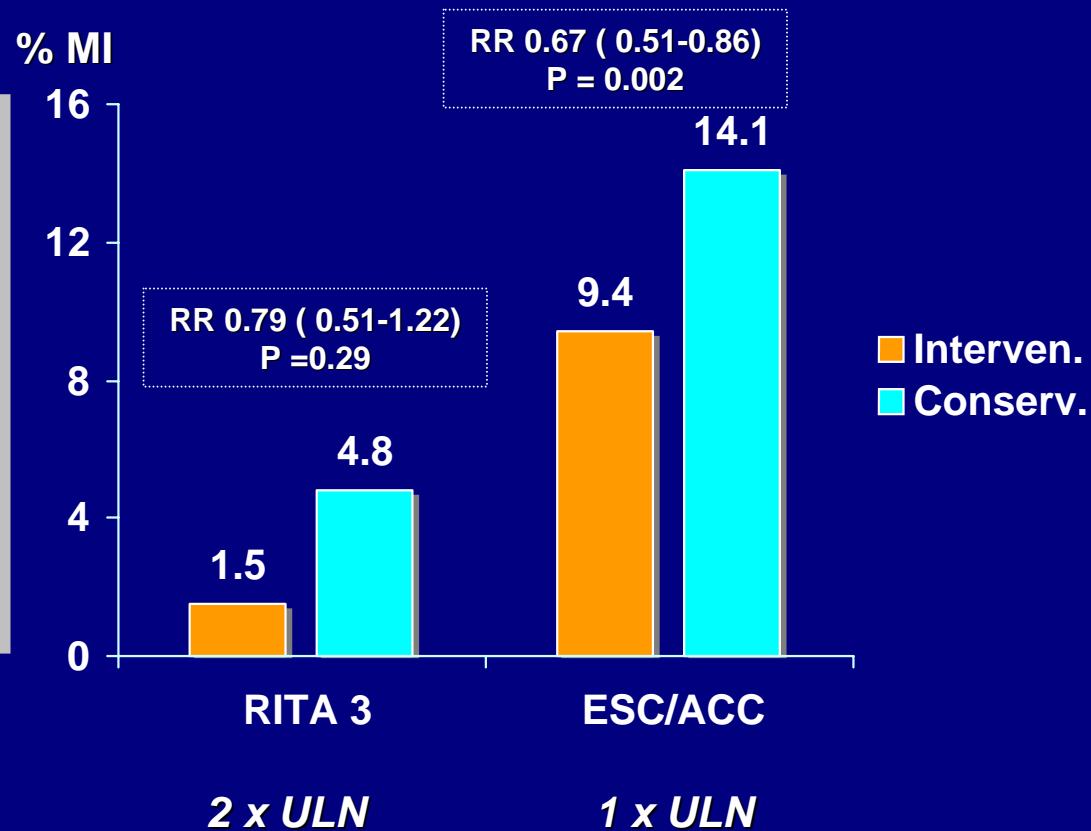
Outcomes at 6 mos



Interventional vs Conservative Rx for UA/NSTEMI: *RITA 3* Lancet 360: 743, 2002

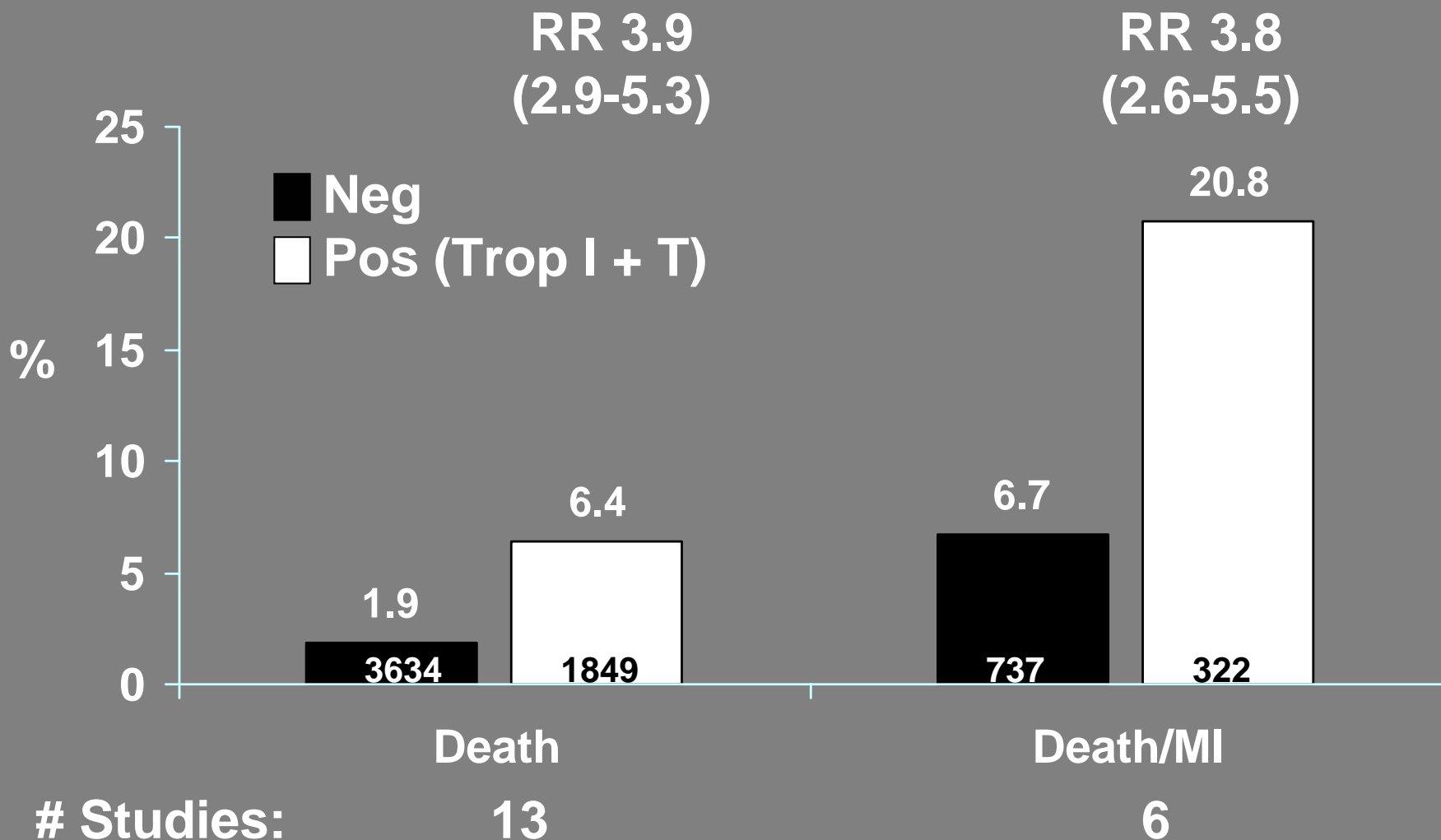


D/MI/ Refractory Angina
RR 0.66 (0.51-0.85) P =0.001

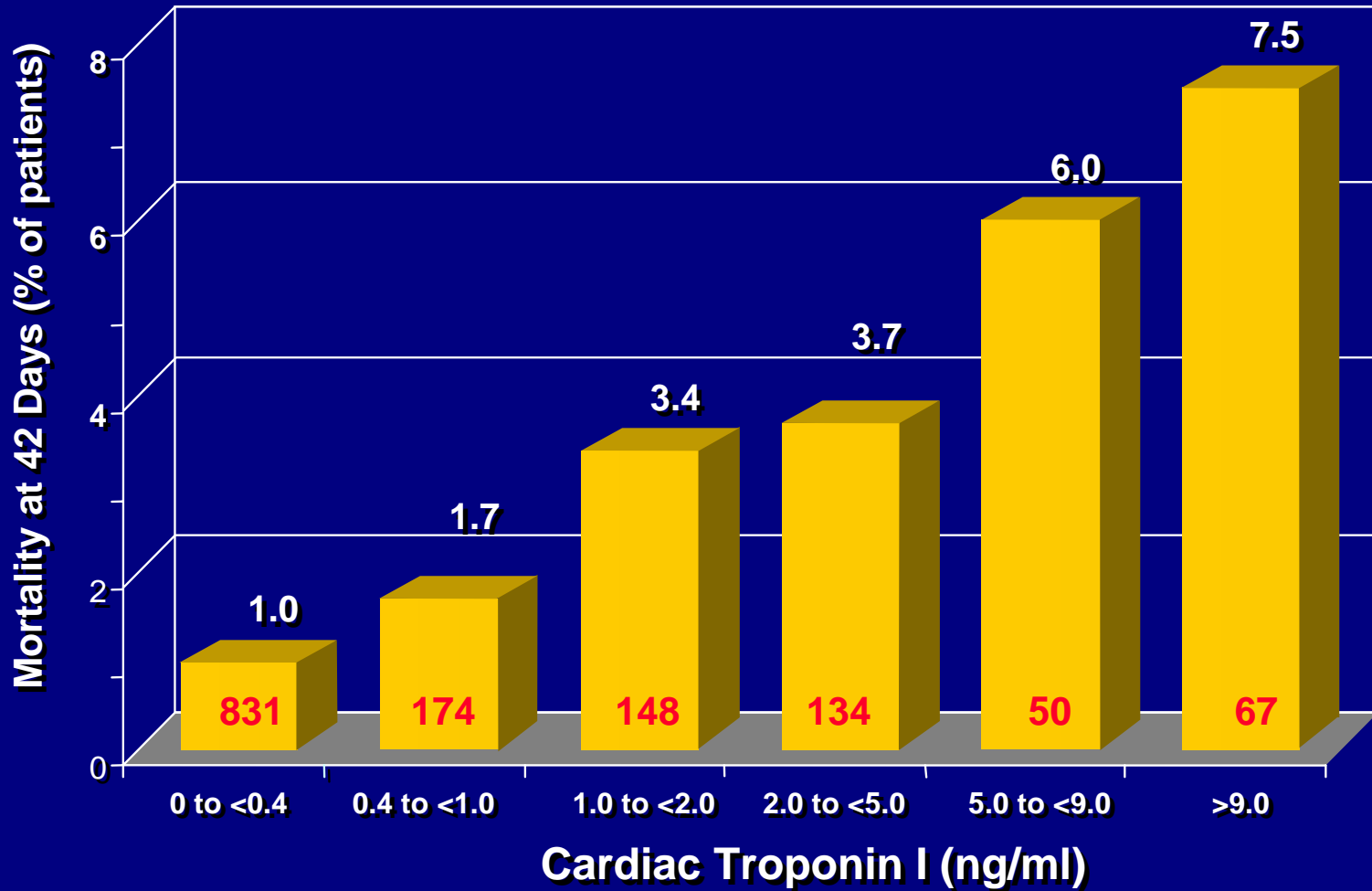


Prognostic Value of Pos. Troponin Test in ACS

Heidenreich PA, Hlatky, MA *UCSF-Stanford Evid.-based Pract.Ctr*



TROPONIN I LEVELS PREDICT THE RISK OF MORTALITY IN UA/NSTEMI



Risk Ratio

1.0

1.8

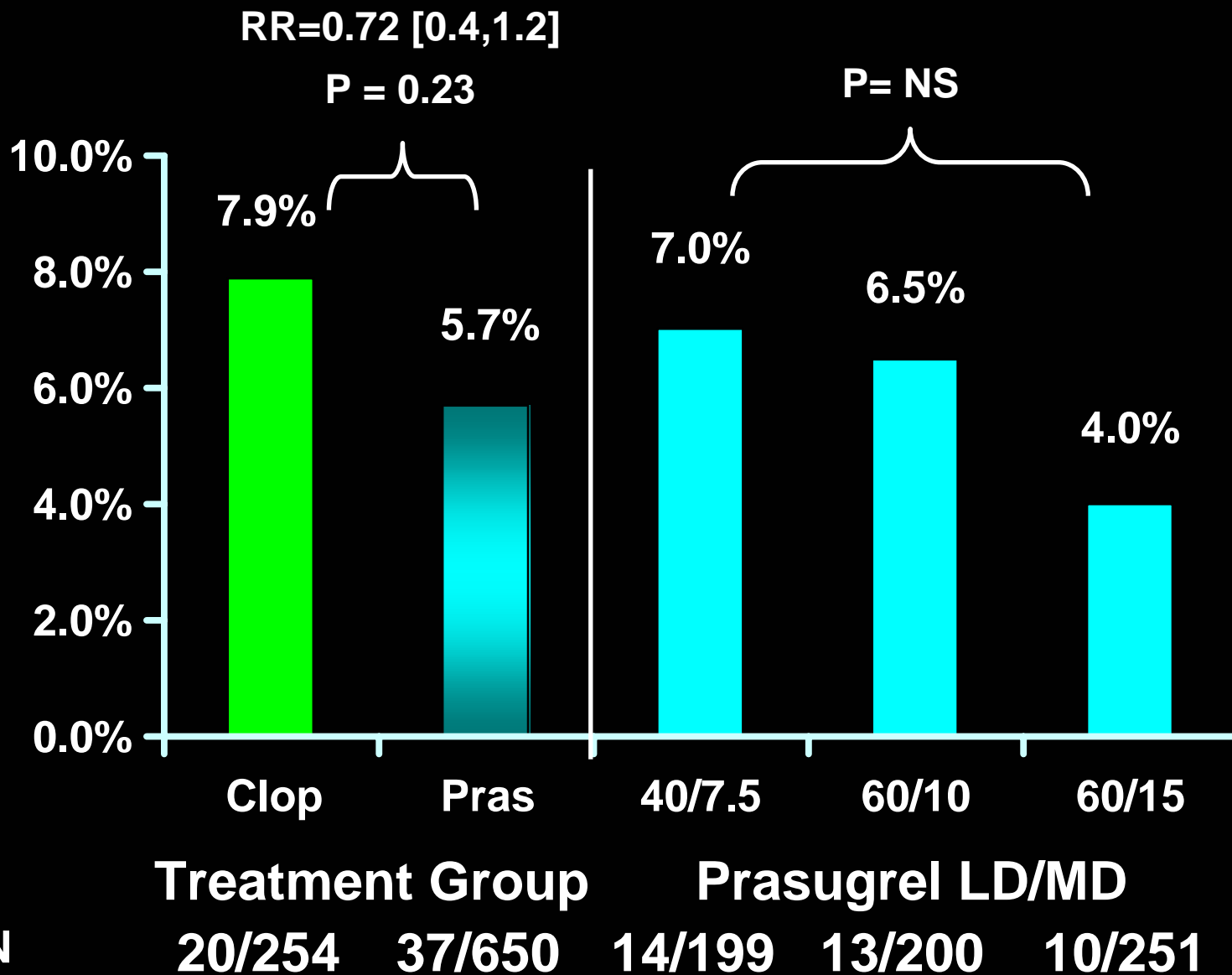
3.5

3.9

6.2

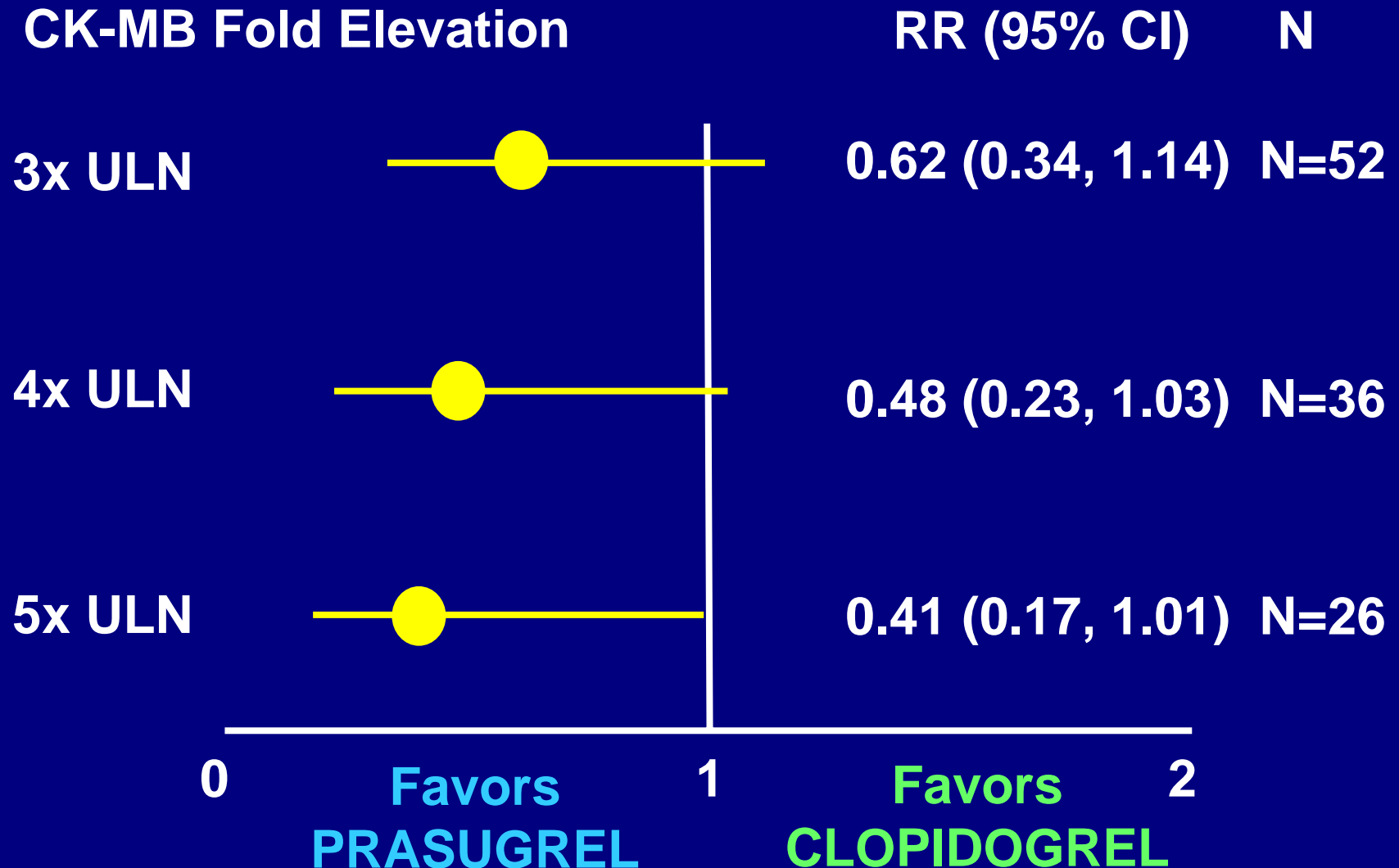
7.8

Elective /Urgent PCI: MI at 30 D

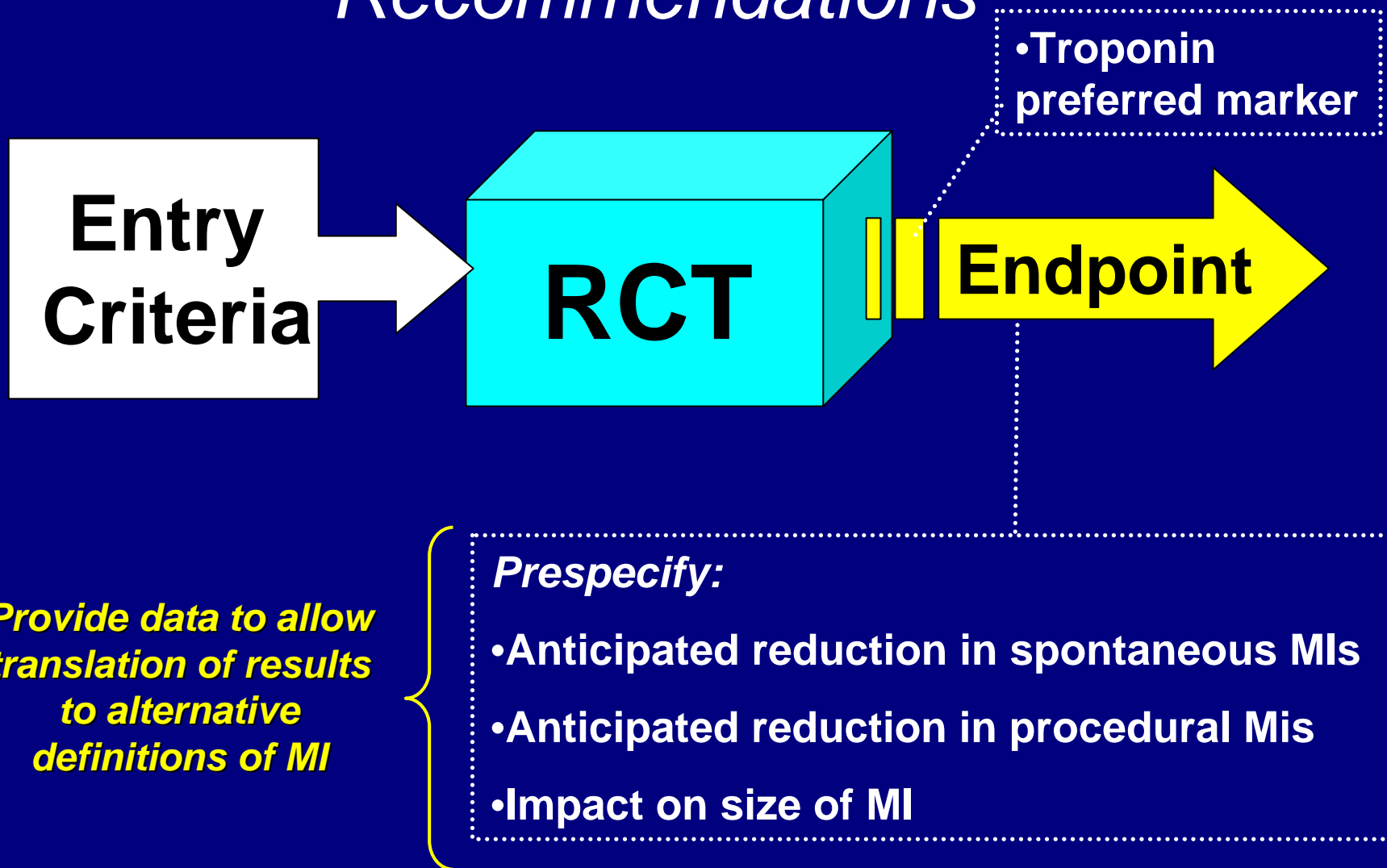


Extent of CK-MB Elevation

Relative Risk (+/- 95% CI)



MI in Clinical Trials: *Recommendations*



MI in clinical Trials: Issues Needing Resolution

- Definition of MI in various clinical settings
 - Spontaneous*
 - PCI*
 - CABG*
- More transparent laboratory reporting of URL for MI
- Incorporation of size of MI when interpreting results