



**STOCKHOLM**

**ESC  
CONGRESS  
2010**

28 August - 1 September 2010  
[www.escardio.org](http://www.escardio.org)

# ISAR-REACT 3A

## Comments

**Christian W. Hamm**

**Kerckhoff Heart & Thorax Center**

**Bad Nauheim Germany**



No conflict to report with respect to this study

# Guidelines on myocardial revascularization

## The Task Force on Myocardial Revascularization of the European Society of Cardiology (ESC) and the European Association of Cardio-Thoracic Surgery (EACTS)

**Table 36** Antithrombotic treatment options in myocardial revascularization

Elective PCI				
Antiplatelet therapy		Class <sup>a</sup>	Level <sup>b</sup>	Ref. <sup>c</sup>
	ASA	I	B	55
	Clopidogrel	I	A	55
	Clopidogrel - pretreatment with 300 mg loading dose > 6 h before PCI (or 600 mg > 2 h before)	I	C	—
	+ GPIIb–IIIa antagonists (bailout situation only)	IIa	C	—
Anticoagulation				
	UFH	I	C	—
	Enoxaparin	IIa	B	244

W. Wijns, P. Kolh et al, in press



# Facts: UFH during PCI

- Effect poorly predictable
- Dose empiric
- ACT control controversial
- Few controlled/ randomized trials





# Advice from Guidelines

## ESC Guidelines 2010

„Unfractionated heparin (UFH) is currently the gold standard antithrombotic medication:  
**70-100 IU/kg IV bolus** without GPIIb-IIIa inhibitors, ... „

## Recommendation I - C

# ISAR-REACT 3A:

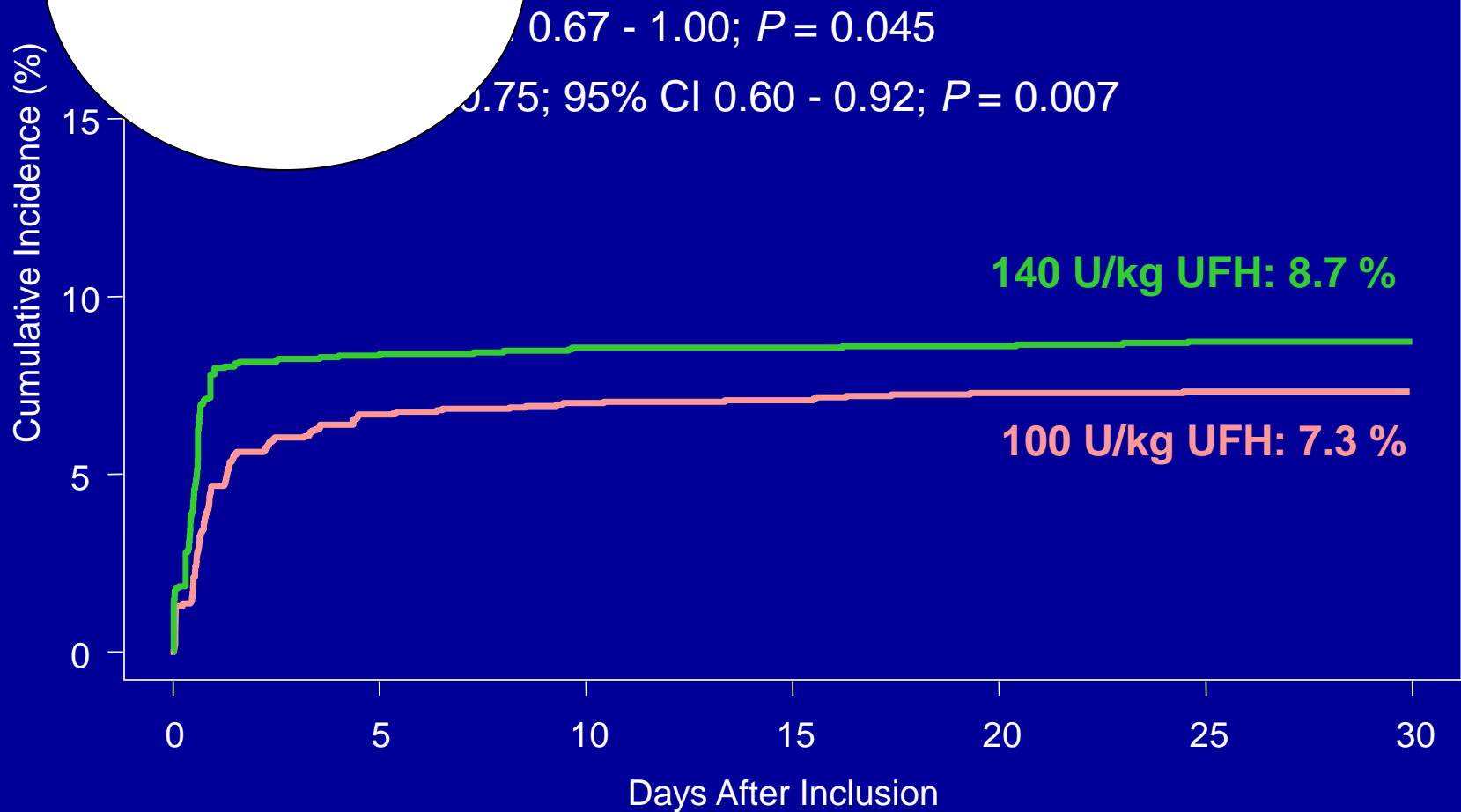
(Intracoronary Stenting and Antithrombotic Regimen-  
Rapid Early Action for Coronary Treatment 3A)

A trial of ~~reduced~~ dose of unfractionated  
heparin in biomarker negative patients  
undergoing percutaneous coronary  
intervention

# Primary (Quadruple) Endpoint

Net clinical Outcome -

**Good News**



# UFH Dose?



- ISAR-REACT 3A: 140 U/KG vs. 100 U/kg

- |                         |               |
|-------------------------|---------------|
| • STEEPLE (2006)        | 70 – 100 U/kg |
| • Vainer et al. (1997)  | 5000 U        |
| • Koch et al. (1997)    | 5000 U        |
| • Kaluski et al. (2000) | 2500 U        |
| • Caussin et al (2003)  | 3000 U        |



# Anticoagulation during PCI 2010

---

- Less thrombogenic material (guide, wires, ...)
- Shorter procedures
- Less thrombogenic contrast media
- Adjunctive antiplatelet medication: clopidogrel

# Take home message

---



- In elective PCI:

**Not more than 100 U / kg UFH**

**Probably less!**



**STOCKHOLM**

**ESC  
CONGRESS  
2010**

28 August - 1 September 2010

[www.escardio.org](http://www.escardio.org)



**Thank You !**