

Long-term outcomes of STEMI after thrombolysis vs inter-hospital transport for primary PCI

5-years follow-up of the PRAGUE-2 trial

Discussant

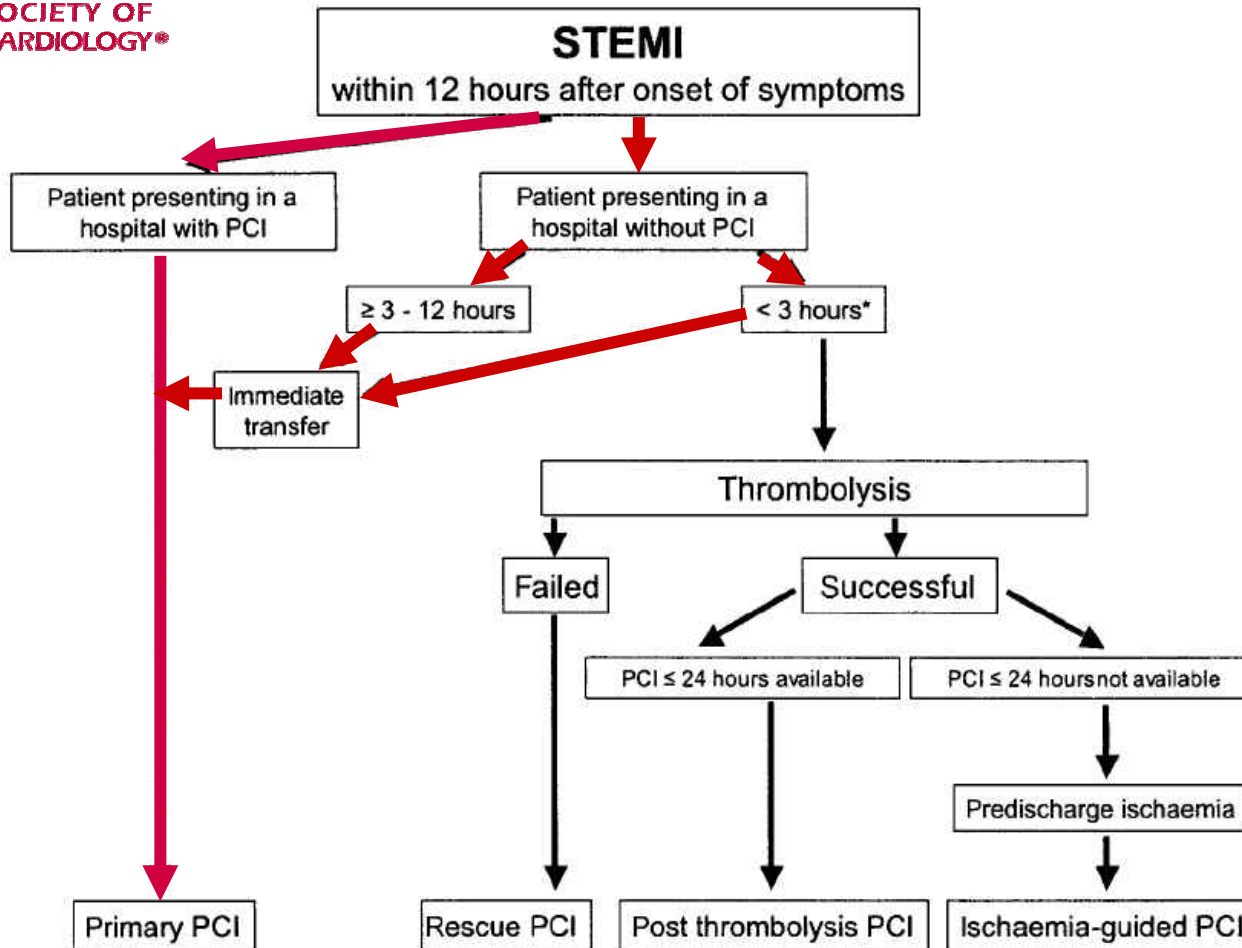


Anselm K. Gitt
Herzzentrum Ludwigshafen
Institut f. Herzinfarktforschung
Germany



EUROPEAN
SOCIETY OF
CARDIOLOGY®

ESC Guidelines for PCI



Primary PCI Class I A

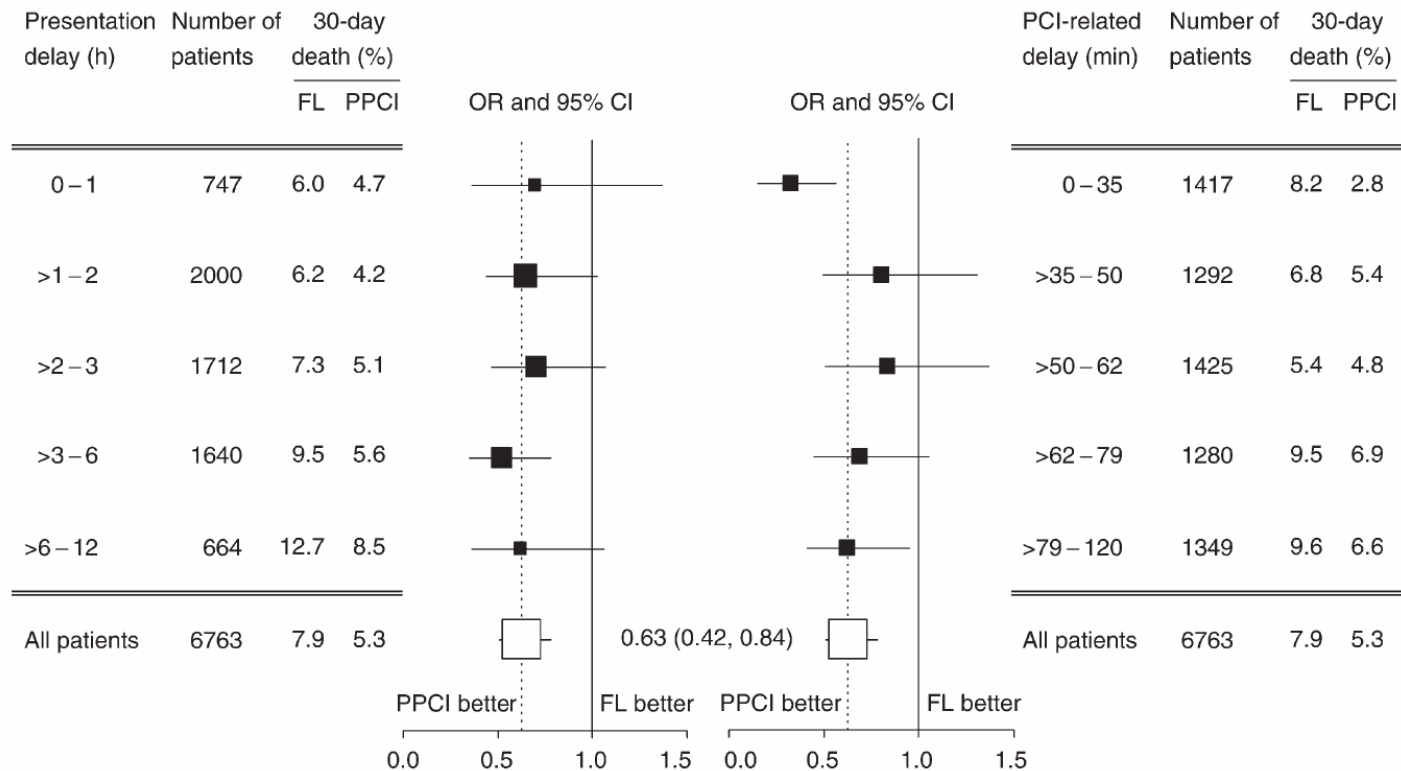
- PAMI
- GUSTO IIb
- C-PORT
- PRAGUE-1
- PRAGUE-2
- DANAMI-2

Silber et al., Eur Heart J, 2005, 26: 804-847

Reperfusion of STEMI

- Primary PCI vs FL -

Meta-Analysis, PCAT-2 (n=7743)



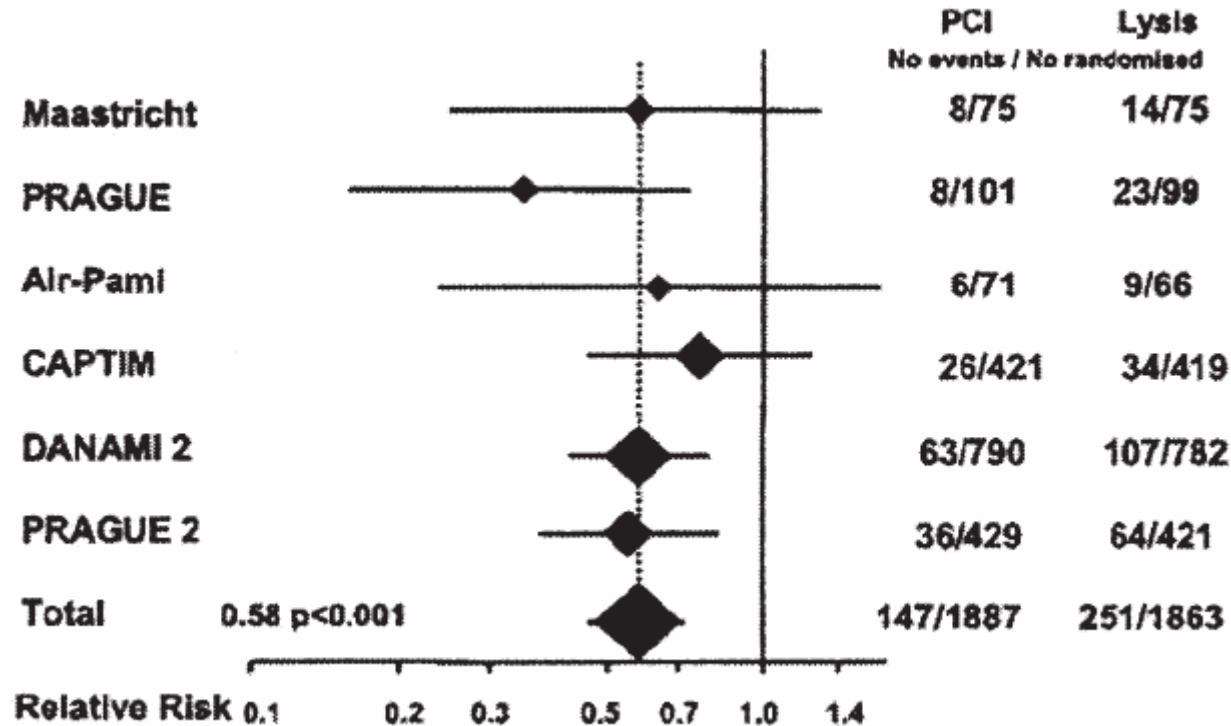
Boersma et al., Eur Heart J 2006 (27): 779



Death / Re-MI / Stroke (30-Day)

- PPCI with Transport vs FL -

Meta-Analysis, 6 RCT (n=3750)



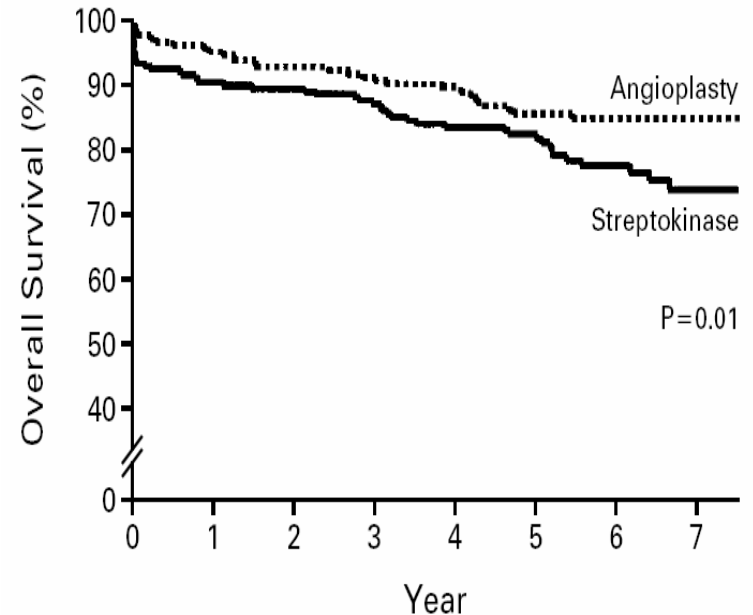
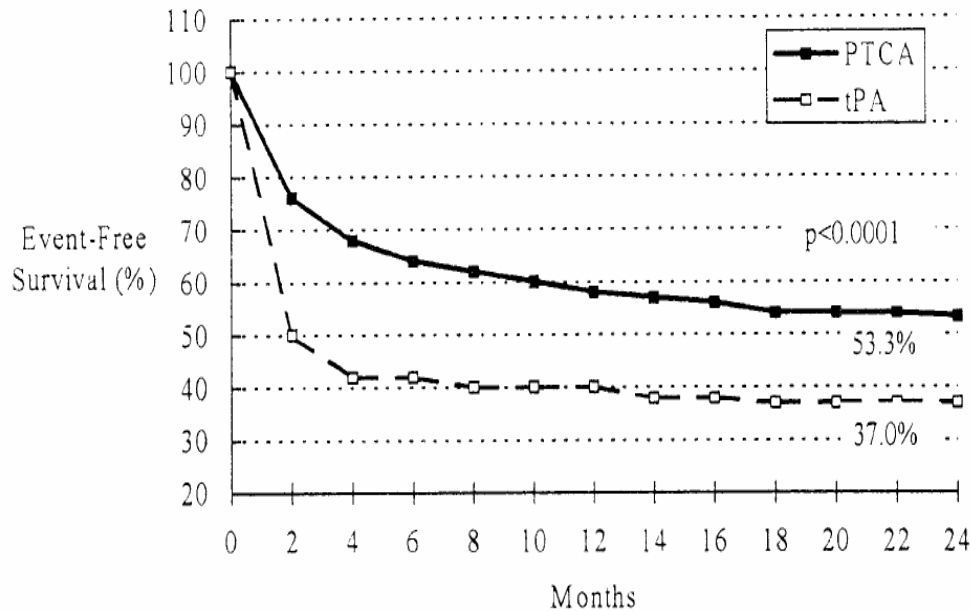
Dalby et al., Circulation 2003 (108): 1809-1814

Reperfusion of STEMI

- Primary PCI vs FL -

PAMI-I (n=395)

Single-Centre, Zwolle (n=395)



Nunn et al., JACC 1999 (33): 640

Zijlstra et al., NEJM 1999 (341): 1314

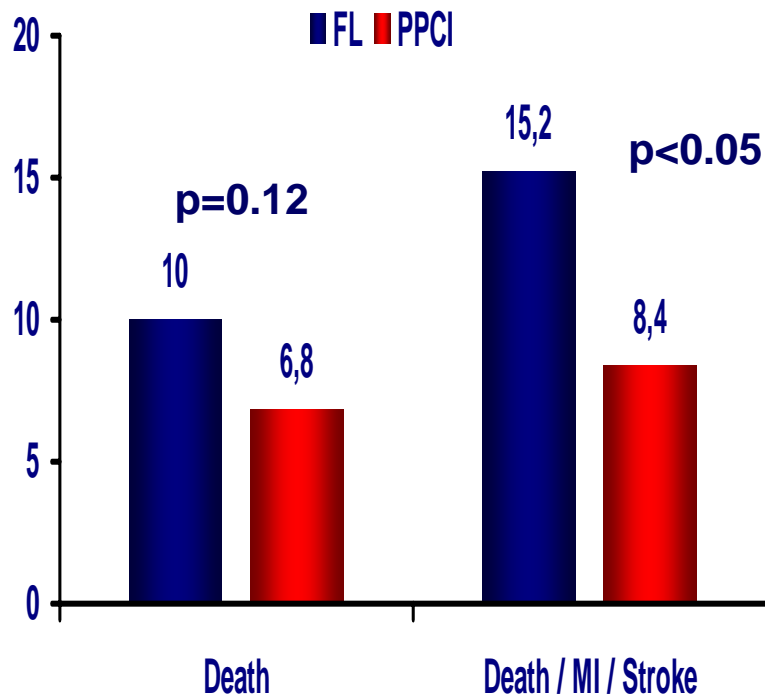


Prague-2

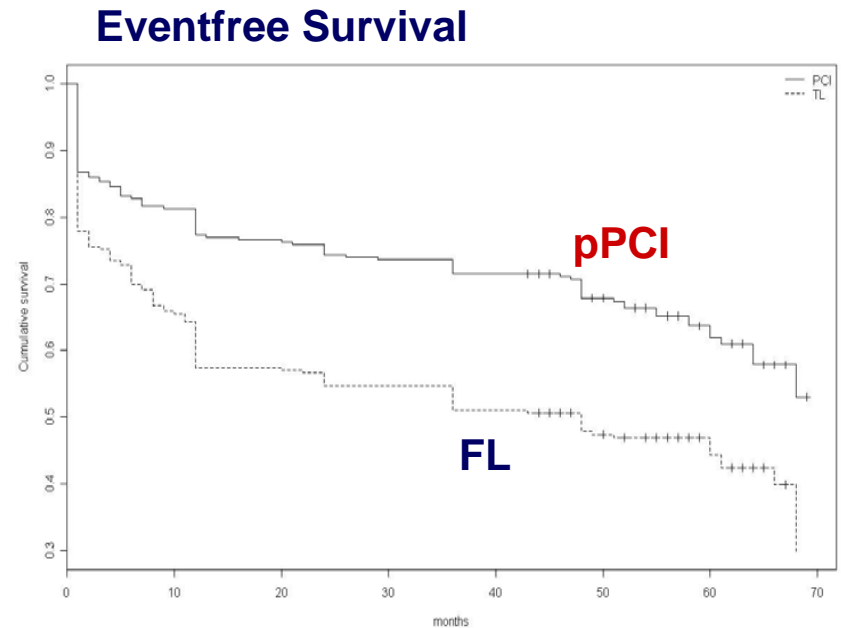
- PPCI with Transport vs FL -

30-Day Outcome

5-Year-Outcome



Widimsky et al., EHJ 2003 (24), 94-104

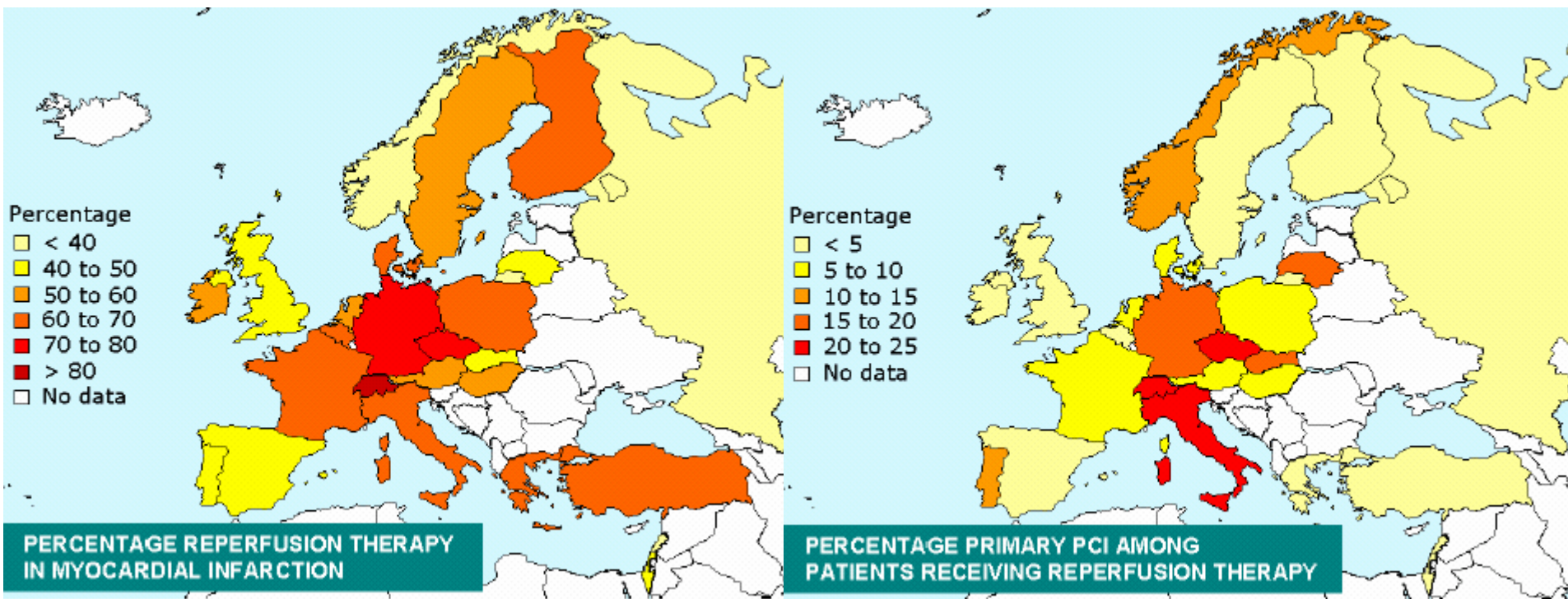


Widimsky et al., WCC 2006, Barcelona



Myocardial Infarction

- Reperfusion Therapy for STEMI -

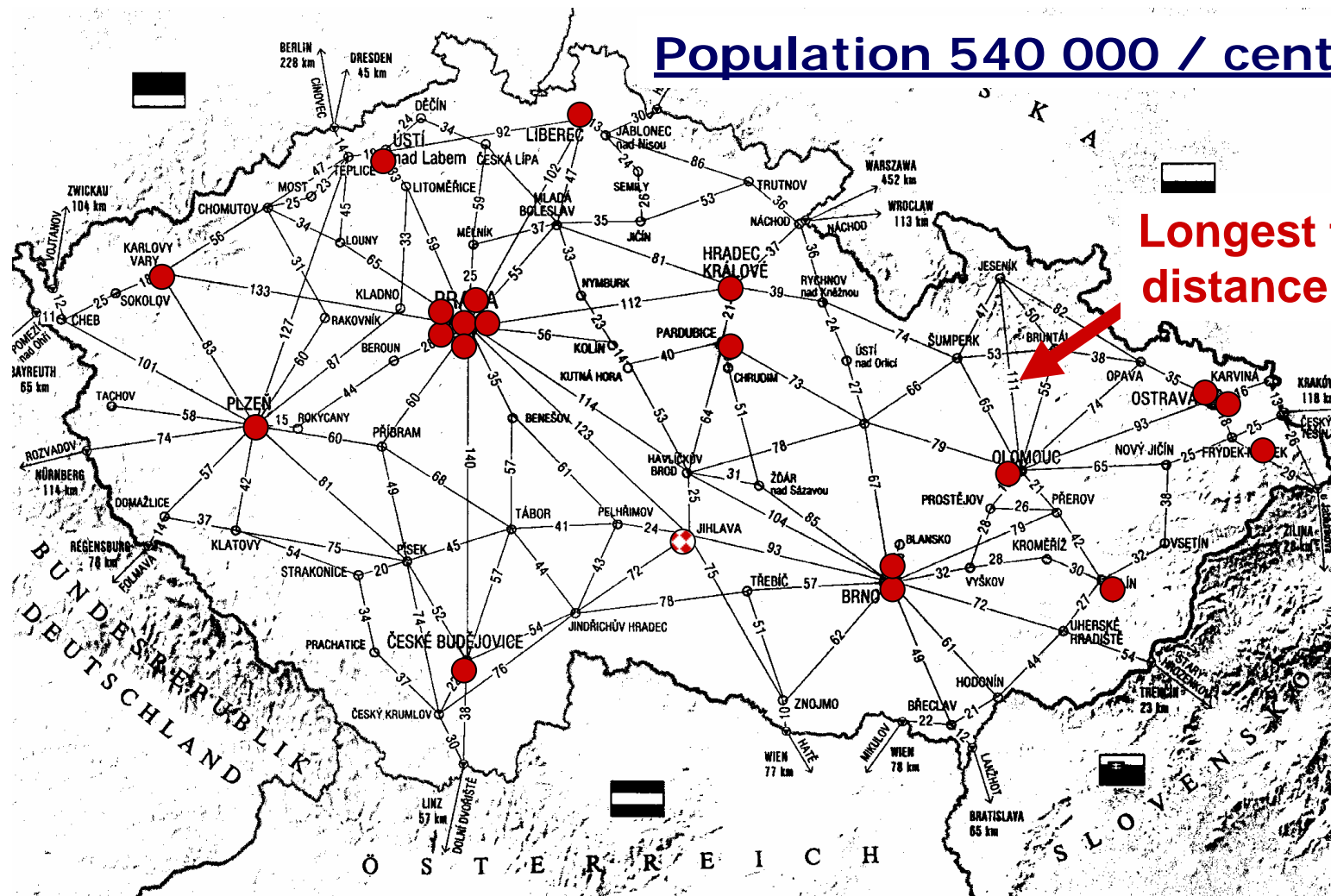


W Scholte op Reimer, AK Gitt, E Boersma, M Simoons, ESC Report on CVD, 2004

Primary PCI in Czech Republic

- Network for STEMI-Treatment -

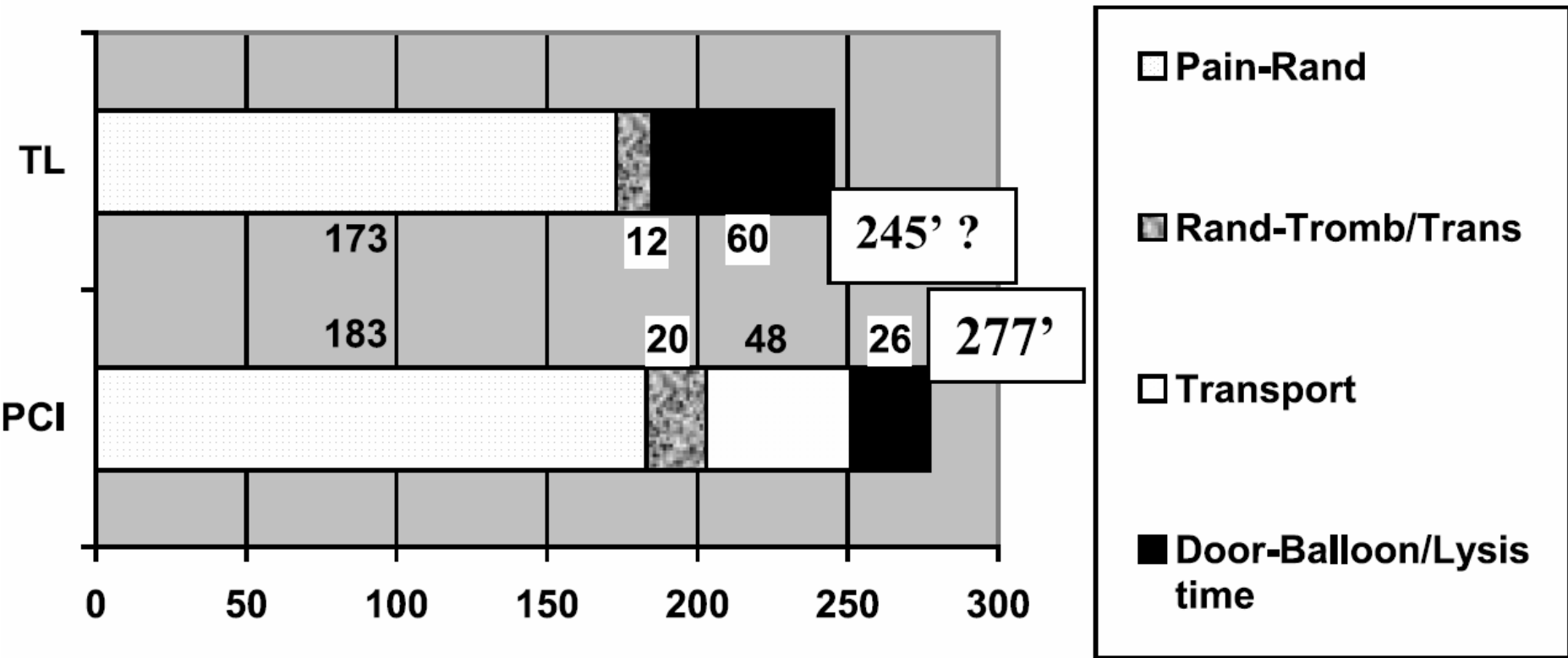
Population 540 000 / center



Longest transfer distance 111 km

Prague-2

- Time-Delays -



Widimsky et al., EHJ 2003 (24), 94-104

Primary PCI in Europe

- Benefit on Acute and Longterm Outcome -

*Knowing is not enough,
we must apply*

*Willing is not enough,
we must do*

Johann Wolfgang Goethe, 1749 - 1832