

# Atrial flutter – different techniques for ablation of tricuspid isthmus

Pr Nadir SAOUDI

Service de Cardiologie

Centre Hospitalier Princesse Grace

98000 MONACO (Principauté)

Tel: + 377 97 98 97 71

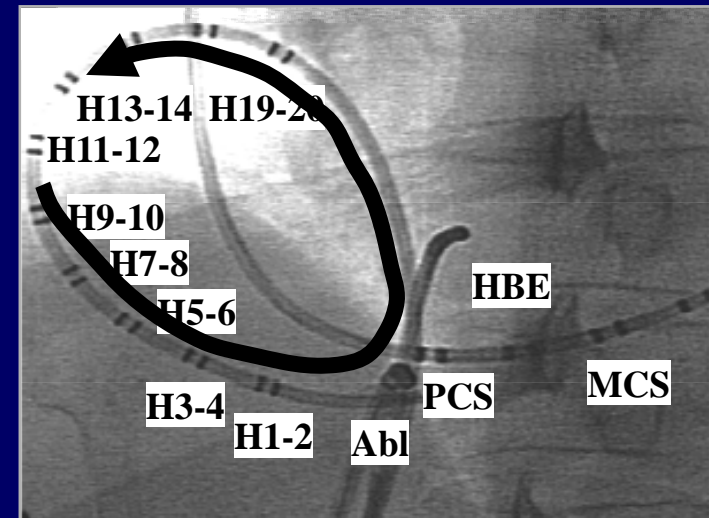
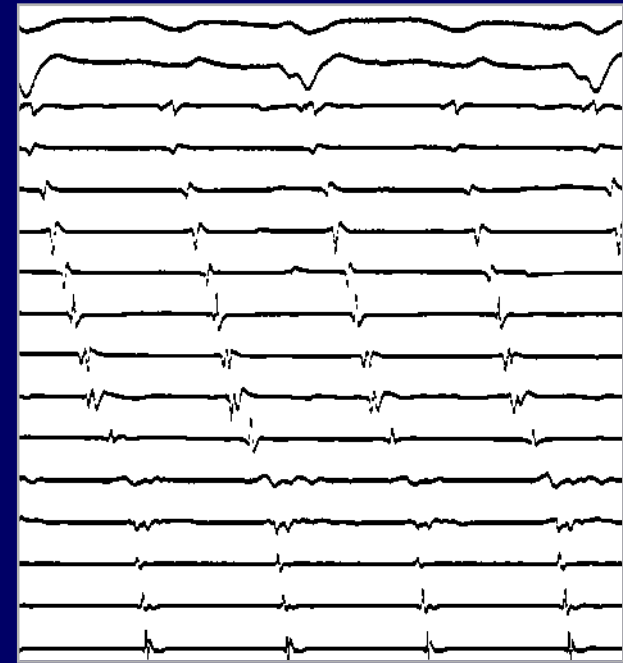
Fax: + 377 97 98 97 32

[nsaoudi@chpg.mc](mailto:nsaoudi@chpg.mc)

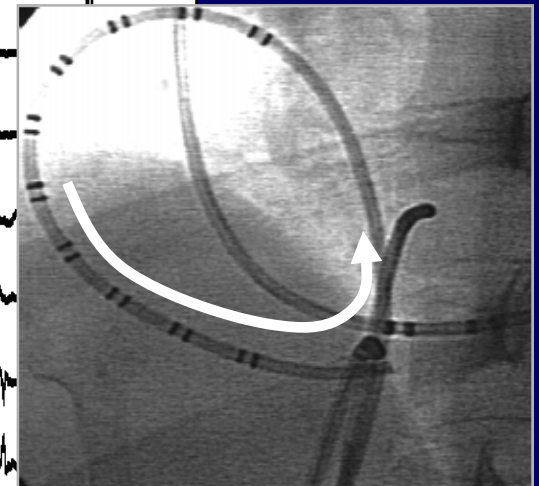
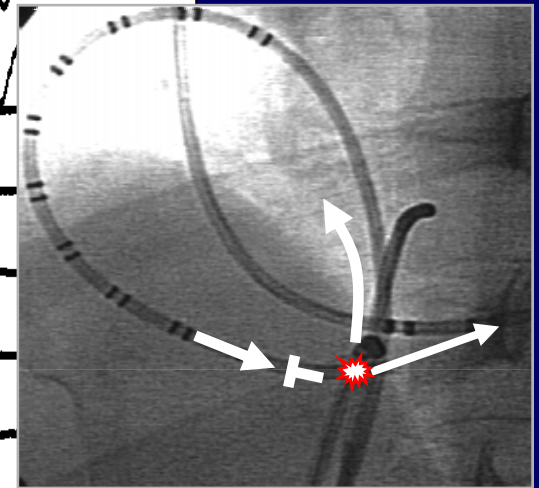
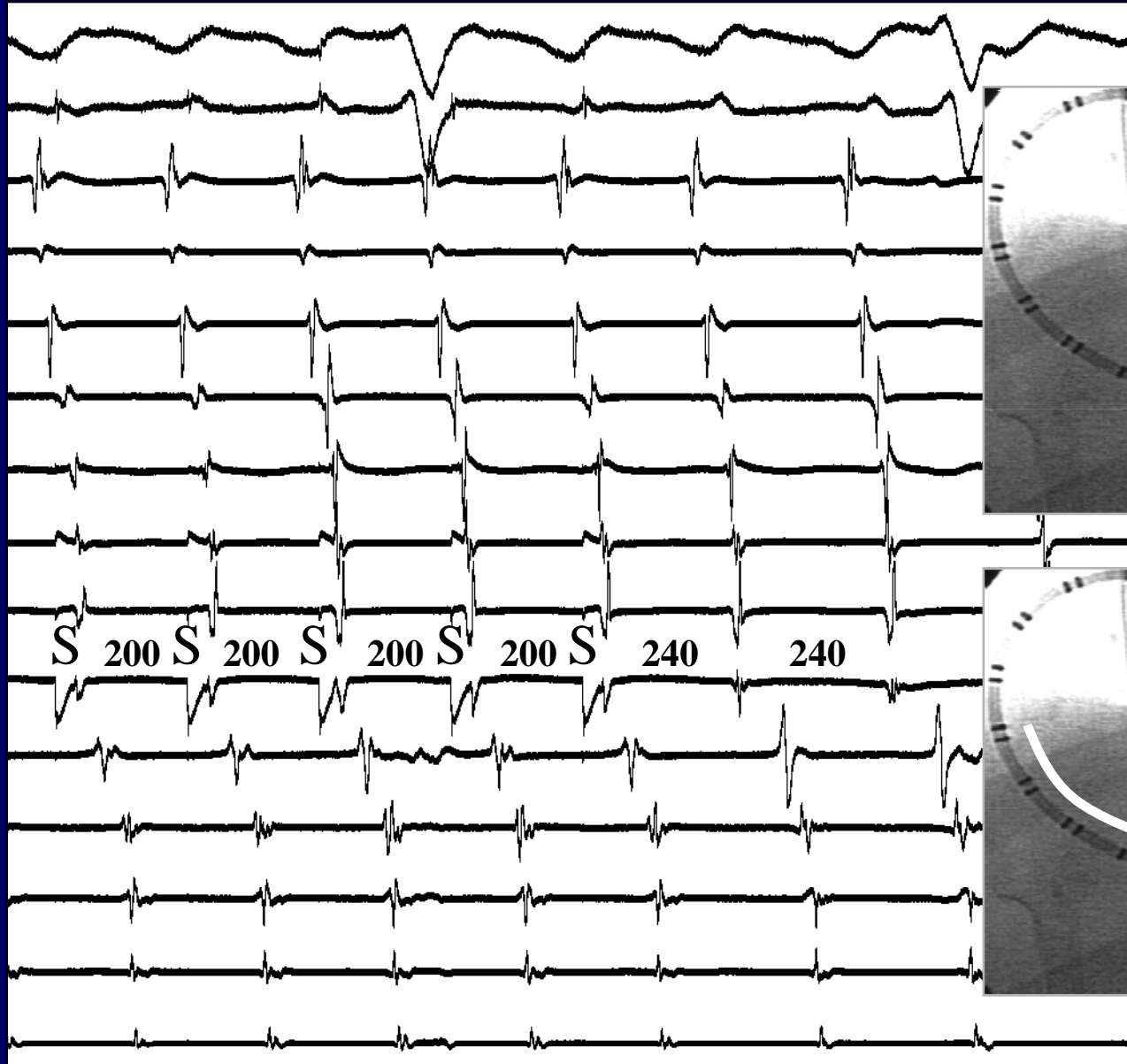
I  
II  
III  
AVR  
AVL  
AVF  
V<sub>1</sub>  
V<sub>2</sub>  
V<sub>3</sub>  
V<sub>4</sub>  
V<sub>5</sub>  
V<sub>6</sub>



II  
V1  
H15-16  
H 13-14  
H 11-12  
H 9-10  
H 7-8  
H 5-6  
H 3-4  
H 1-2  
Isth. p  
CS 9-10  
CS 7-8  
CS 5-6  
CS 3-4  
CS 1-2



II  
 V1  
 H 13-14  
 H 11-12  
 H 9-10  
 H 7-8  
 H 5-6  
 H 3-4  
 H 1-2  
 Isth. p  
 CS 9-10  
 CS 7-8  
 CS 5-6  
 CS 3-4  
 CS 1-2



# Atypical Surface ECG Patterns of Typical Atrial Flutter

I  
II  
III  
aVR  
aVL  
aVF  
V1  
V2  
V3  
V4  
V5  
V6



**II**

**III**

**V1**

**H 9-10**

**H 7-8**

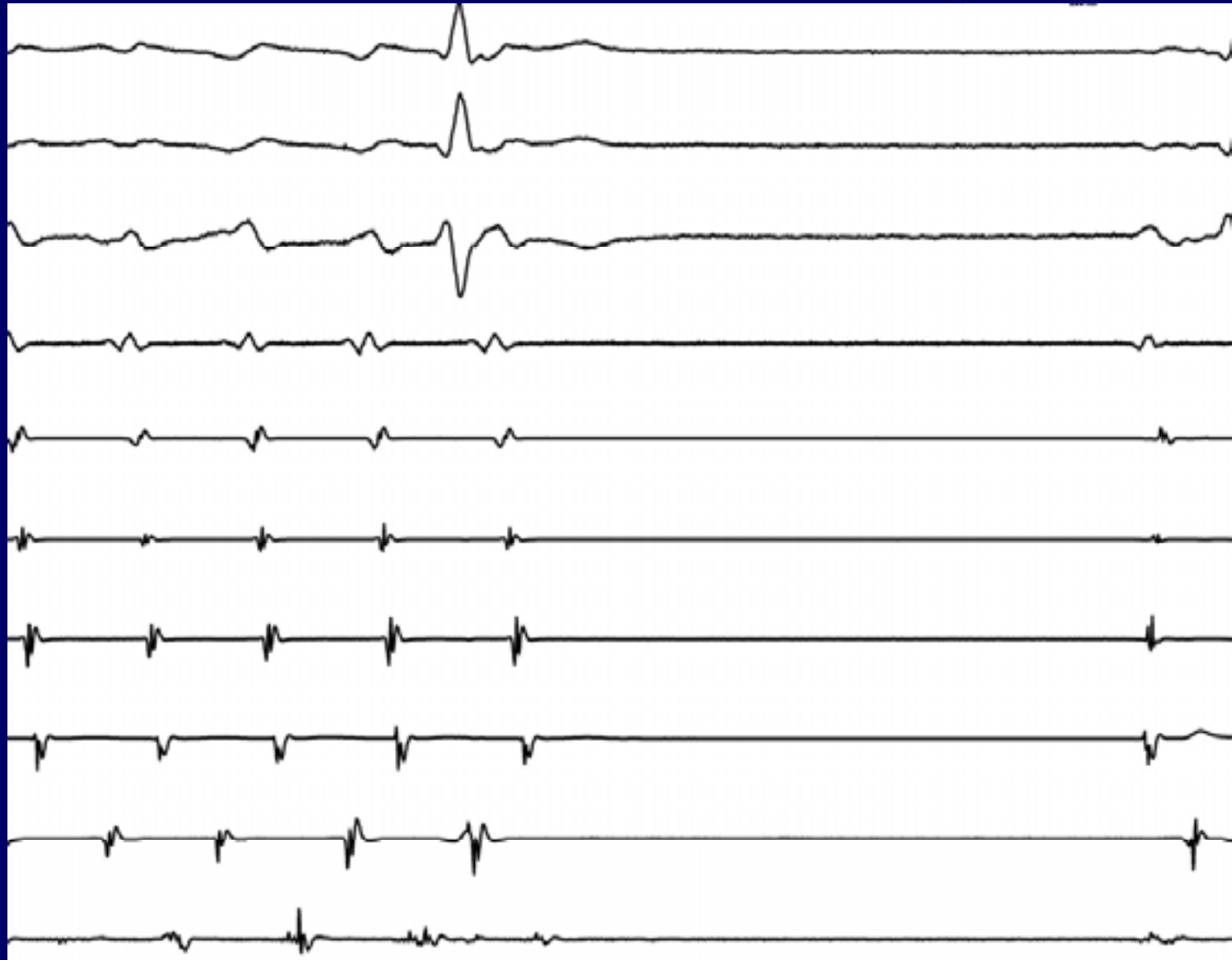
**H 5-6**

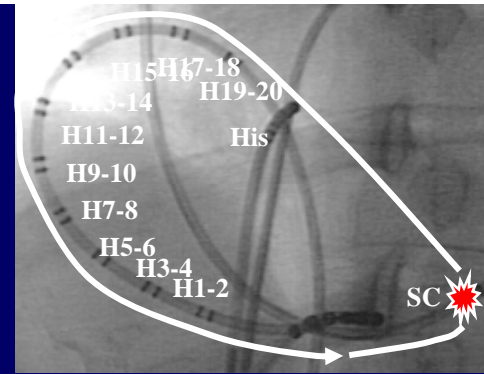
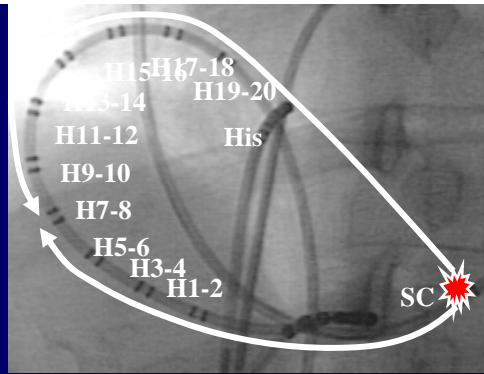
**H 3-4**

**H 1-2**

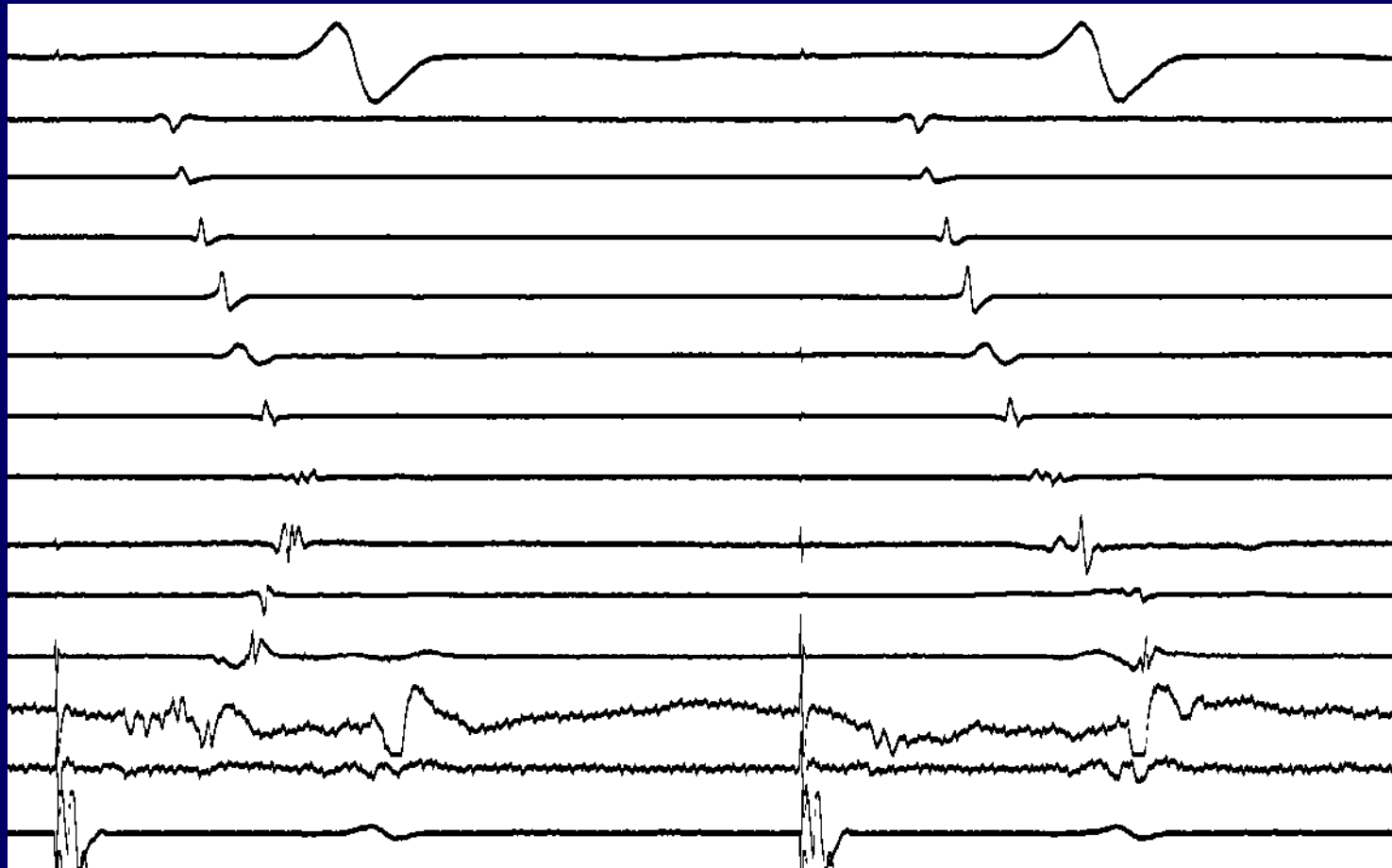
**CS 3-4**

**Abl d**

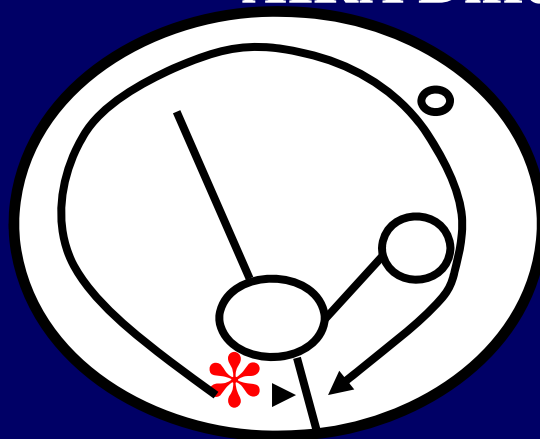




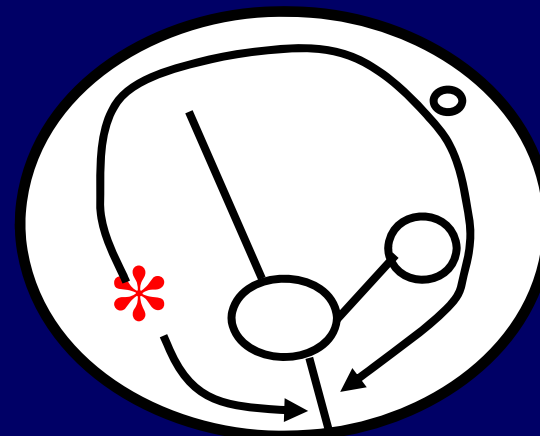
**V2**  
**H19H20**  
**H17H18**  
**H15H16**  
**H13H14**  
**H11H12**  
**H9H10**  
**H7H8**  
**H5H6**  
**H3H4**  
**H1H2**  
**Abl 1-2**  
**Abl 3-4**  
**CS7-8**



# AIRA Differential Pacing

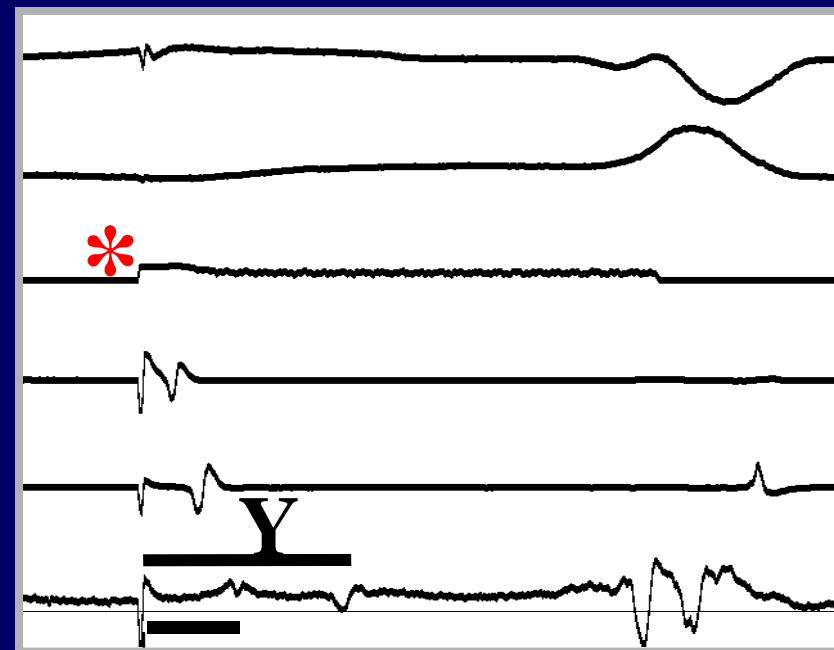
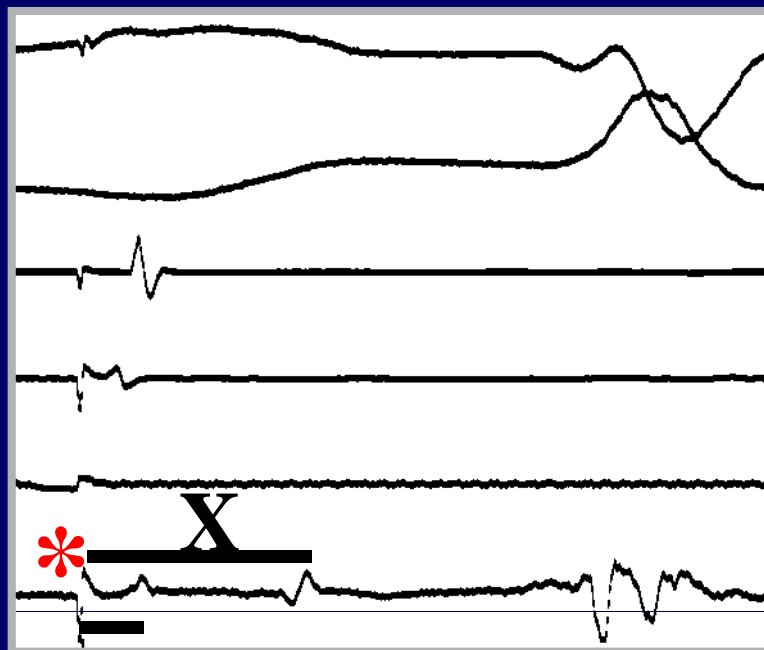


S-A2=X



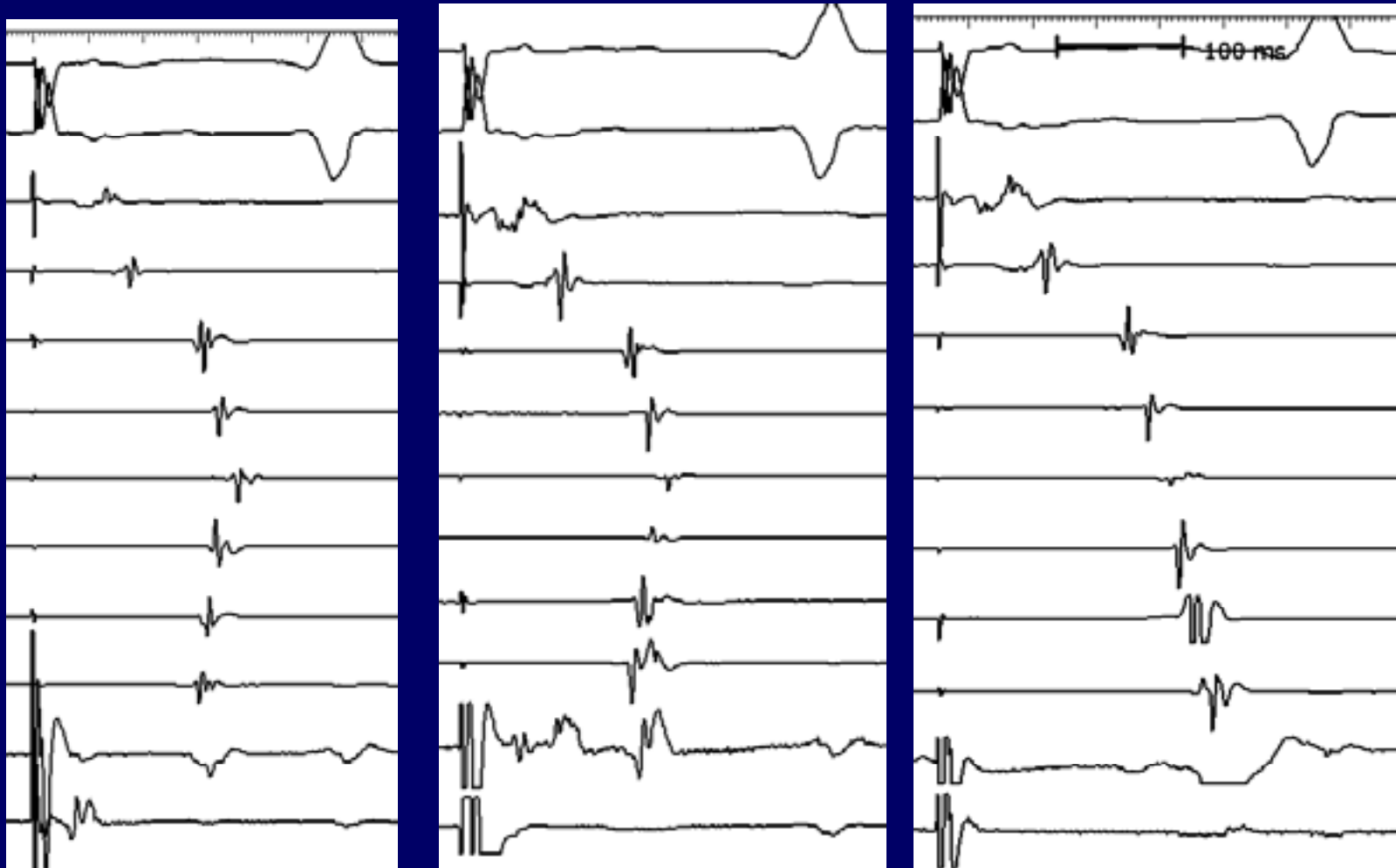
S-A2=Y<X

II  
V1  
H 5-6  
H 3-4  
H 1-2  
Abl



# Ambiguities of the « Incomplete Isthmus Block Pattern »

II  
V1  
H19H20  
H17H18  
H11H12  
H9H10  
H7H8  
H5H6  
H3H4  
H1H2  
Abl 1-2  
Abl 3-4



# Incomplete CTI block Pattern due to Transcristal Conduction.

V1

H19-20

H17-18

H15-16

H13-14

H11-12

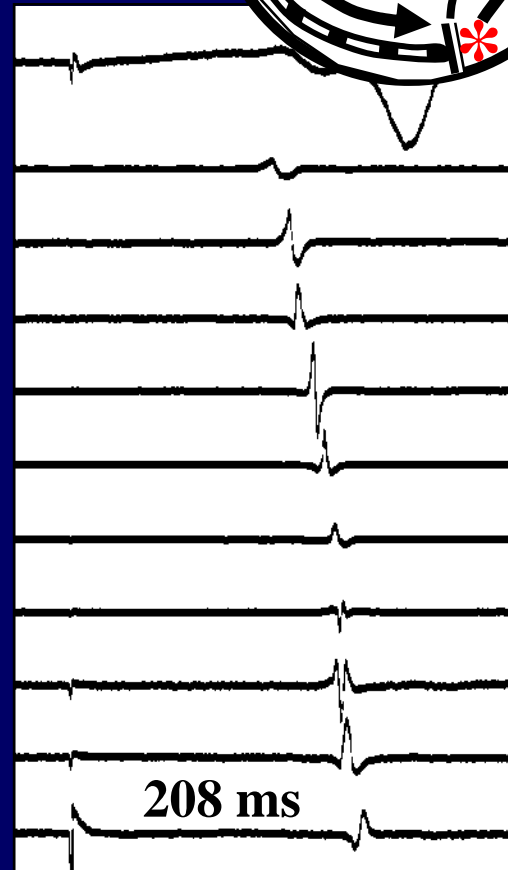
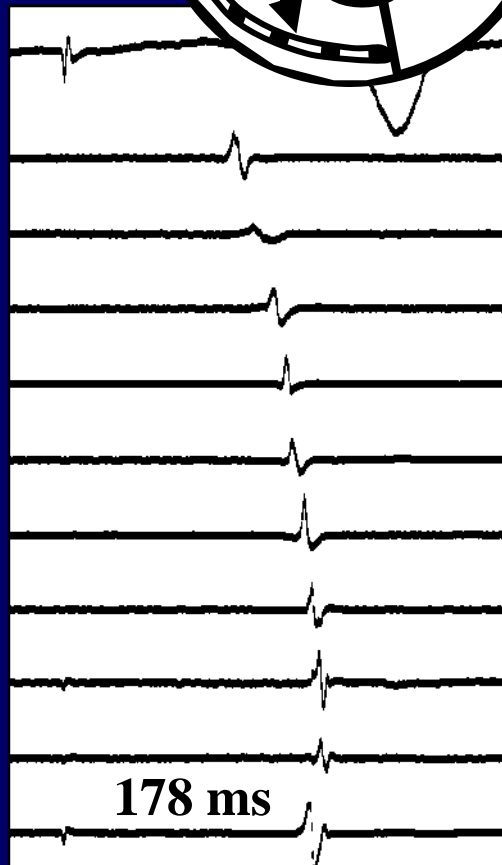
H9-10

H7-8

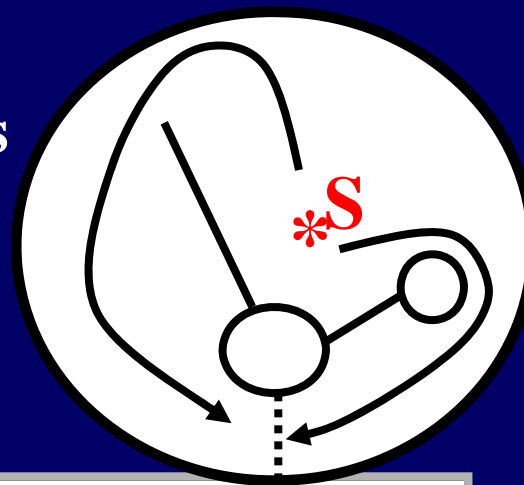
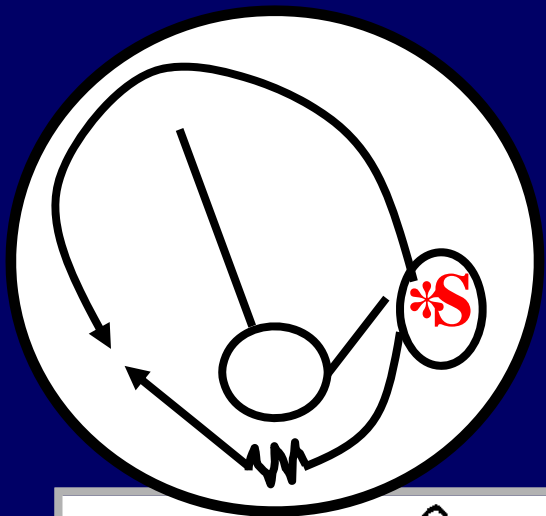
H5-6

H3-4

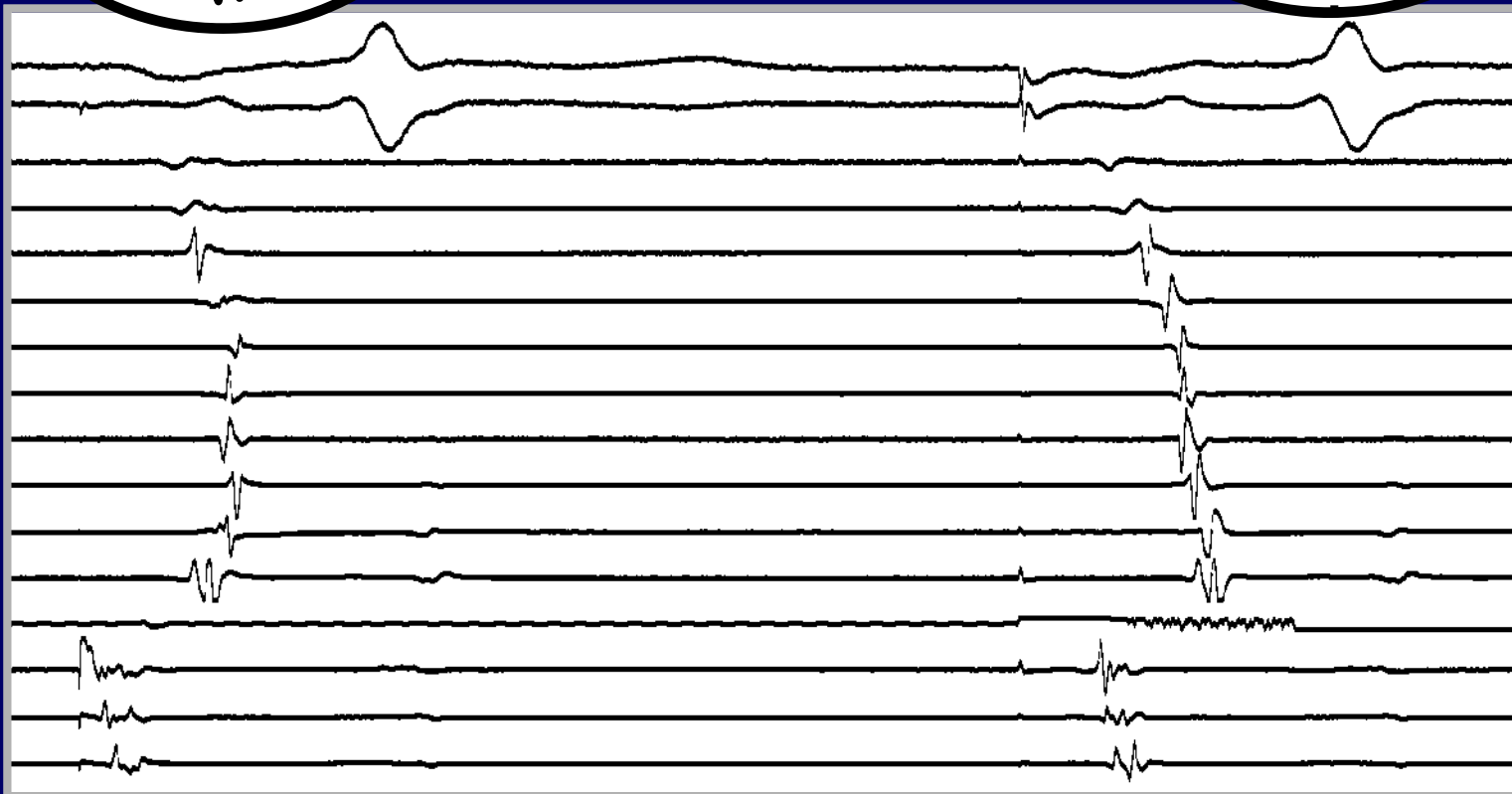
H1-2



# True Incomplete Clockwise Isthmus Block



II  
 VI  
 H 19-20  
 H 17-18  
 H 15-16  
 H 13-14  
 H 11-12  
 H 9-10  
 H 7-8  
 H 5-6  
 H 3-4  
 H 1-2  
 Post wall  
 PCS  
 MCS  
 DCS



# Proof of Incomplete CTI Block Pattern due to Transcrystal Conduction.

